

January 21, 2022

## Top News

### 2021 W-2 Form Distribution



W-2 forms will be sent via the U.S. Postal Service to all employees by the end of the month. Employees with full access to Oracle will also be able to view W-2s online by the end of the month. W-2s will be mailed to the address on record in Oracle as of December 31, 2021.

### Student Home COVID-19 Testing Begins Next Week



As an additional COVID-19 prevention measure in schools, families have been asked to administer rapid home tests to children and share results each Sunday beginning Jan. 23 through Feb. 27.

[Learn More](#)

**Help Prevent the Spread: Get Vaccinated and Boosted!**

**HANG  
IN THERE  
EVERYONE**



**We have  
the tools  
to slow the  
spread of  
COVID-19.**

**CONTINUE TO FIGHT COVID-19!**

- Get vaccinated
- Get boosted when eligible
- Mask up indoors in public and outdoors if social distancing is not possible
- Get tested before gatherings

**Urge family, friends, and co-workers  
to continue to take these actions.**

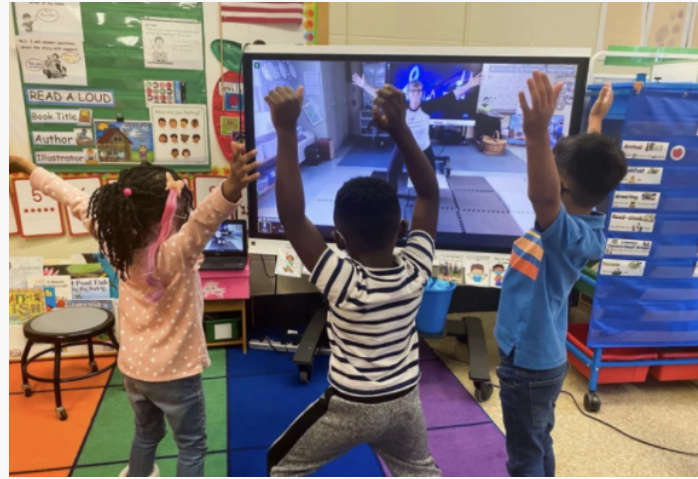


**For more information,  
please scan the QR code.**

Protect your family and help slow the spread of COVID-19 by getting vaccinated! PGCCPS continues to partner with the Prince George's County Health Department to hold after-school mobile vaccination clinics in elementary schools. For a complete clinic schedule of sites throughout the county and to download consent forms for individuals younger than 18, visit the county's vaccine site at [mypgc.us/COVIDvaccine](https://mypgc.us/COVIDvaccine).

**In the Spotlight**

## The Arts as a Boost for Mental Health



Frances Fuchs Early Childhood Center music educator Monica Levin was featured by NPR in a story on how music, theater and art teachers help students cope with the social and emotional effects of the pandemic.

[Read Story](#)

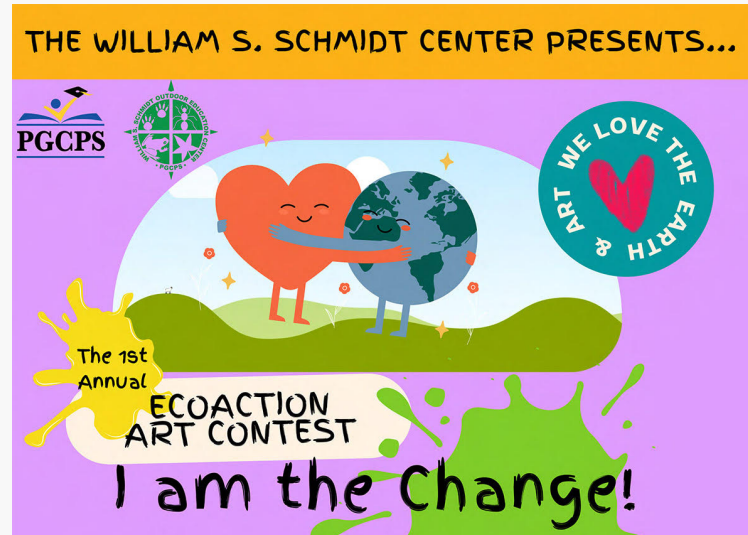
## Announcements and Professional Development

### PGCPS Goes Red for American Heart Month



February is American Heart Month, the perfect time to learn about your risk for heart disease and the steps you need to take now to help your heart. Join us on Friday, Feb. 4 for #PGCPSGoesRed and wear red in support of ending heart disease.

## Student Environmental Stewardship Art Contest



The William S. Schmidt Center is challenging students to create an original two-dimensional piece of art with the theme *Be the Change: What actions can you take to protect the environment around you?* One winner will be chosen from each region (North, Central and South) in five grade divisions (15 total winners). Entries will be judged by the environmental message, visual presentation and creativity/craftsmanship. **Entries must be received by Friday, Feb. 4.**

## Wellness360 Free Fitness Classes!



**BurnAlong** gives you instant access to **on-demand and live video classes** spanning 45+ fitness and wellness categories. Classes are accessible on phones, tablets, computers, and smart TVs. There are classes for every age, interest, and fitness level, ranging from 5 to more than 60 minutes.

The service is available free of charge to permanent PGCPs employees and their family members (you can add up to four family members under your account).

Register: [join.burnalong.com/PGCPS](https://join.burnalong.com/PGCPS)

**For additional information or questions, please contact [wellness.benefits@pgcps.org](mailto:wellness.benefits@pgcps.org).**

**Information Session with American College of Education**

# PGCPS Teachers and Staff, make this year your year!

Join us to learn about available opportunities with American College of Education, including:

- Single course offerings
- Master's in Educational Leadership
- Online doctoral programs
- Partnership grants... and more!

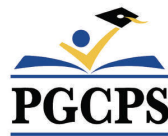
## February 23

7 PM EST



**Melissa Hill**

Manager, Field  
Operations



[Register Now](#)

## 2022 ESFCU Professional Development Awards Now Available!

Educational Systems Federal Credit Union will present professional development awards to 12 educators (administrators, teachers and support staff) who have made a difference by positively impacting student success and

who aspire to further their own development. The \$1,000 award can be used toward continued education (e.g. workshop registration, certification fees, travel and tuition).

[Apply Now](#)

#### STAY CONNECTED

SOCIAL MEDIA [Facebook](#) | [Twitter](#) | [YouTube](#)

PGCPS LINKS [Main Website](#) | [Human Resources](#) | [Payroll](#) | [Hotline](#)

COMMENTS AND IDEAS: [communications@pgcps.org](mailto:communications@pgcps.org)