



PGCPS . **ENGAGE . DESIGN . BUILD . COMMUNICATE** . PGCPS



# DREW-FREEMAN MIDDLE SCHOOL

CONSTRUCTION UPDATE MEETING | OCTOBER 12th, 6:00 PM

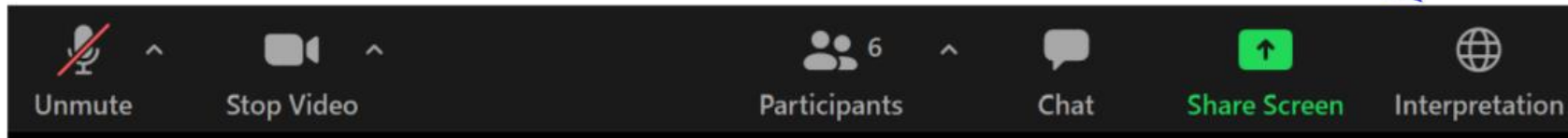


PRINCE GEORGE'S COUNTY  
EDUCATION & COMMUNITY PARTNERS

# SERVICIOS DE INTERPRETACIÓN

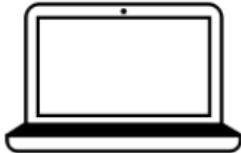
## *INTERPRETING SERVICES*

La interpretación simultánea  
está disponible en español.  
*Simultaneous interpretation is  
available in Spanish.*



# SERVICIOS DE INTERPRETACIÓN

## *INTERPRETING SERVICES*



**On a computer**-- At the bottom of the screen will be an interpretation globe. Click that globe and then select *Spanish*.

**En una computadora**-- En la parte baja de la pantalla habrá un globo de interpretación. Haga clic en ese globo y seleccione "Spanish."

---



**On a mobile device**-- At the bottom of the screen, tap the ellipses icon on the bottom right (...).

- Tap *Language Interpretation*.
- Tap *Spanish*.

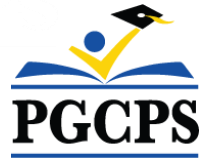
**En un dispositivo móvil**-- En la parte baja de la pantalla, toca el icono de elipses en la parte baja derecha (...).

- Toque *Language Interpretation*.
- Toque *Spanish*.



## **We value your input.**

- Please type your questions/comments in the Q&A area of Zoom.
- Questions and answers from this town hall will be posted on [pgcpsblueprintschools.com](http://pgcpsblueprintschools.com).



## Our Commitment

PGCPS is moving swiftly to deliver safe, state-of-the-art, and sustainable learning environments for our students, teachers, and communities.

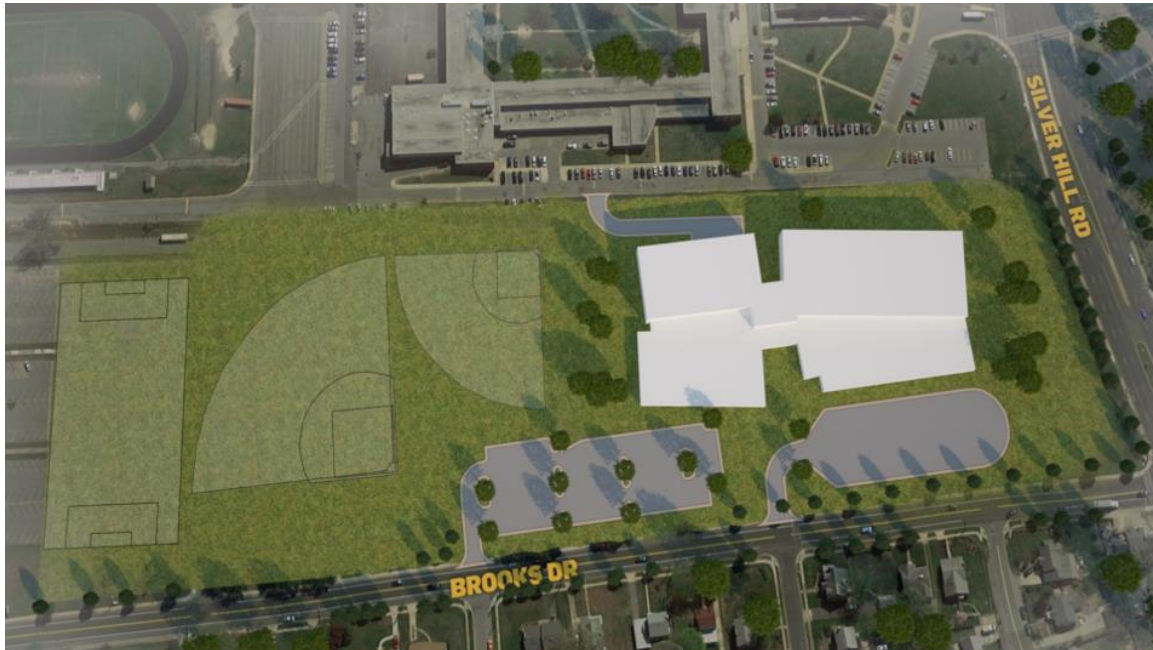
Through a three-pronged approach, traditional Capital Improvement, Staged Renovations, and the nation's first Public School P3 Design-Build-Maintain approach, otherwise known as the Blueprint Schools Program, we're on track to deliver over 25 modernized school facilities in just 10 years.





## Agenda

- Team Introductions
- Project Scope
- Construction Overview
- Q&A





## Team Introductions

- Jason Washington, Director, Blueprint Schools
- Brandey McDonald, Principal in Charge, PGCECP
- Amber Brown, Project Manager, B&D
- Mike Ricketts, Senior Project Executive, Gilbane
- Brian Malanchuk, Senior Project Executive, Gilbane
- Christian Broyles, Project Executive, Gilbane
- Mark Blanchard, Project Manager, Gilbane



## **Project Scope**

**Project Status:** Construction

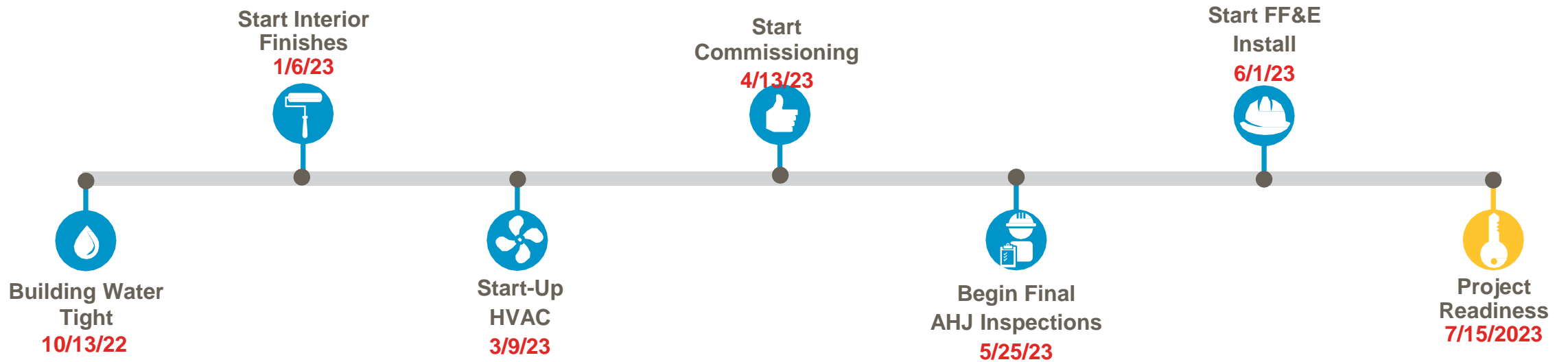
**Square Footage:** 144,800 SF

**Occupancy:** 1,200

**Address:** 2600 Brooks Dr,  
Hillcrest Heights, MD 20746



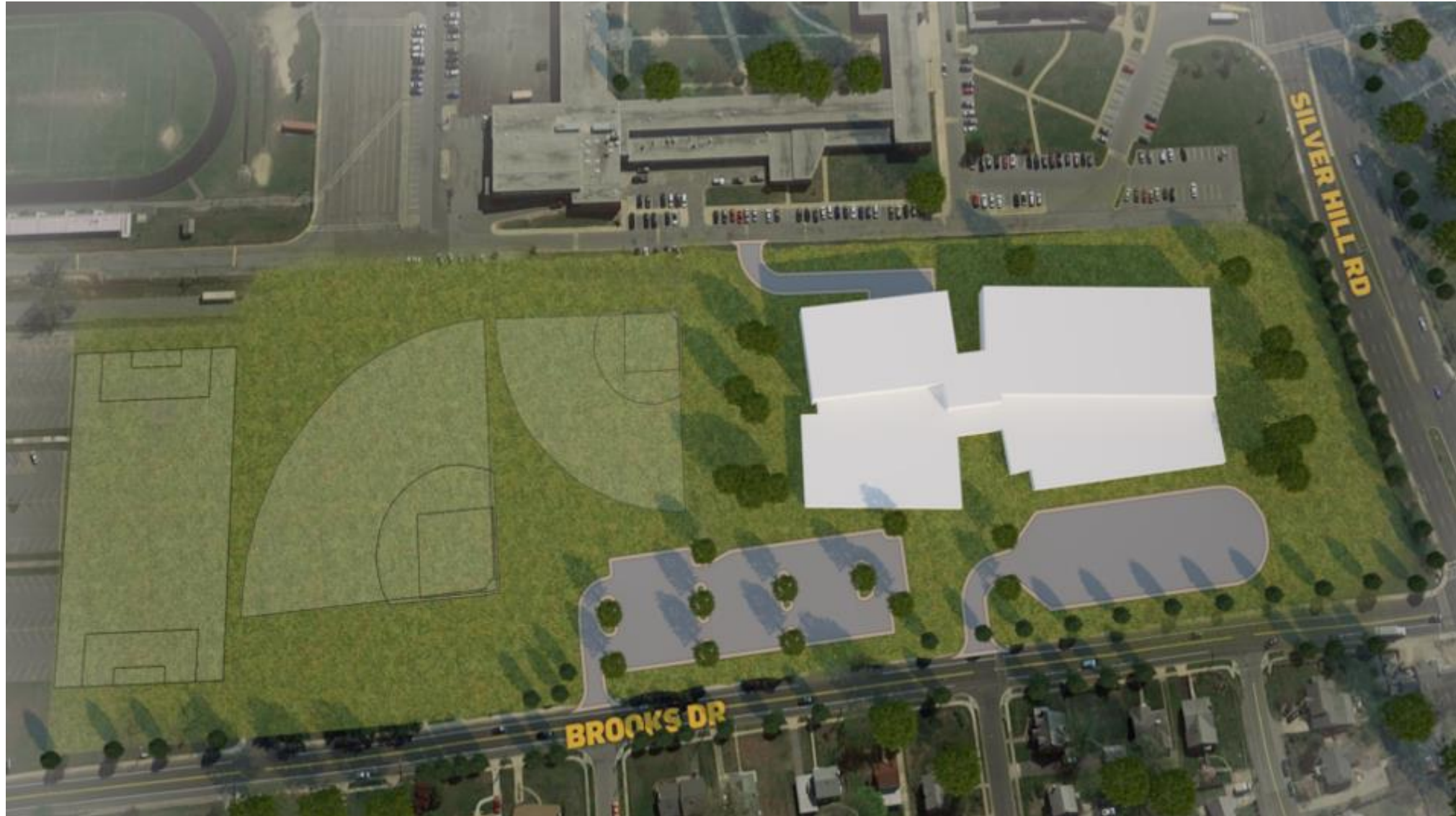
# Construction Overview



## Construction Overview

| Completed Work                        | Work in Progress  | Next Steps                                       |
|---------------------------------------|---|--|
| Primary and secondary steel           | Exterior wall panel installation                            | Elevator equipment delivery and installation     |
| TPO roofing installation              | Installation of exterior windows                            | Curb, gutter, and base coat asphalt installation |
| Interior CMU block wall construction  | Interior stud wall framing and one-sided drywall partitions |  |
| Site underground water utility piping | Interior MEPF overhead and in-wall rough-ins                |  |
|                                       | Main mechanical room and electrical room rough-ins          |  |
|                                       | Interior door frame installation                            |  |
|                                       | Parking lot grading   |  |
|                                       | Installation of underground site utilities                  |  |

# Construction Overview





# Construction Overview





# Construction Overview





# Construction Overview





## Construction Overview



# Construction Overview



## Questions & Answers

**Please note, we will only addressing construction updates and logistics questions. All programming or operational questions will be addressed at a later date.**



**Thank You!**

**To submit additional questions and to view today's presentation, visit [www.pgcpsblueprintschools.com](http://www.pgcpsblueprintschools.com)**