



Suitland High School



Construction Update Meeting Wednesday, December 7, 2022, 7:00pm-8:00pm



Meeting Logistics

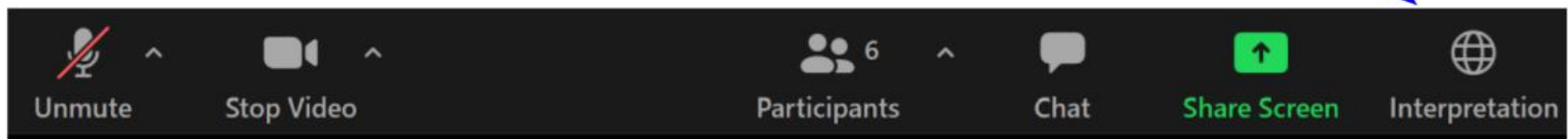


Your participation matters.

- Zoom meeting format
- Language interpretation
- Questions and comments

SERVICIOS DE INTERPRETACIÓN *INTERPRETING SERVICES*

La interpretación simultánea
está disponible en español.
*Simultaneous interpretation is
available in Spanish.*



SERVICIOS DE INTERPRETACIÓN *INTERPRETING SERVICES*



On a computer-- At the bottom of the screen will be an interpretation globe. Click that globe and then select *Spanish*.

En una computadora-- En la parte baja de la pantalla habrá un globo de interpretación. Haga clic en ese globo y seleccione "Spanish."



On a mobile device-- At the bottom of the screen, tap the ellipses icon on the bottom right (...).

- Tap *Language Interpretation*.
- Tap *Spanish*.

En un dispositivo móvil-- En la parte baja de la pantalla, toca el icono de elipses en la parte baja derecha (...).

- Toque *Language Interpretation*.
- Toque *Spanish*.



We value your input.

- Please type your questions/comments in the Q&A area of Zoom.
- Questions and answers from this town hall will be posted on PGCPS Capital Programs Suitland High School project profile page.



- Team Introductions
- Project Overview
- Construction Overview
- Upcoming Events
- Q&A

Team Introductions



Dr. Charoscar Coleman
Associate Superintendent
Department of Supporting Services



Shawn Matlock
Director
Department of Capital Programs



Team Introductions

 Proud Alum!



Will Smith

Supervisor of Project Management,
PGCPS Capital Programs

 Proud Alum!



Sean Nickols

Project Manager,
PGCPS Capital Programs



Tom Wheeler

AE, Project Manager,
cox graae + spack



Rodney Howlett

AE, Construction Administration Lead
cox graae + spack



Brunson Cooper

Corenic Construction,
President

 Proud Parent!



Latoya Stephens

Project Manager,
Turner Construction

 Proud Alum!



Erik Henson

Project Superintendent,
Turner Construction



Frank Johnson

Project Engineer
Turner Construction

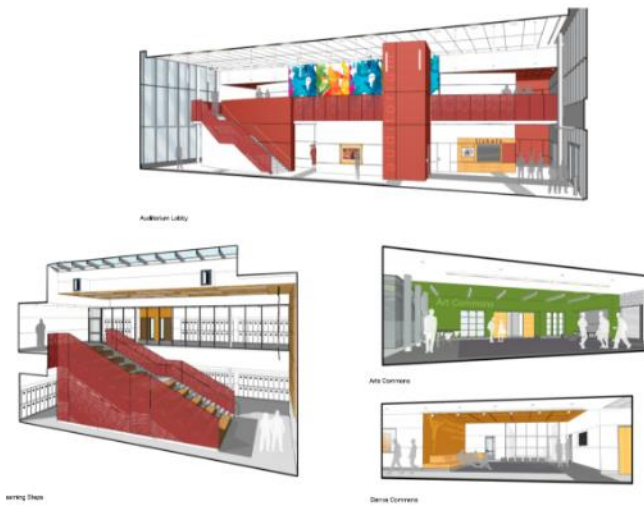
 Proud Alum!



Manny Sampson

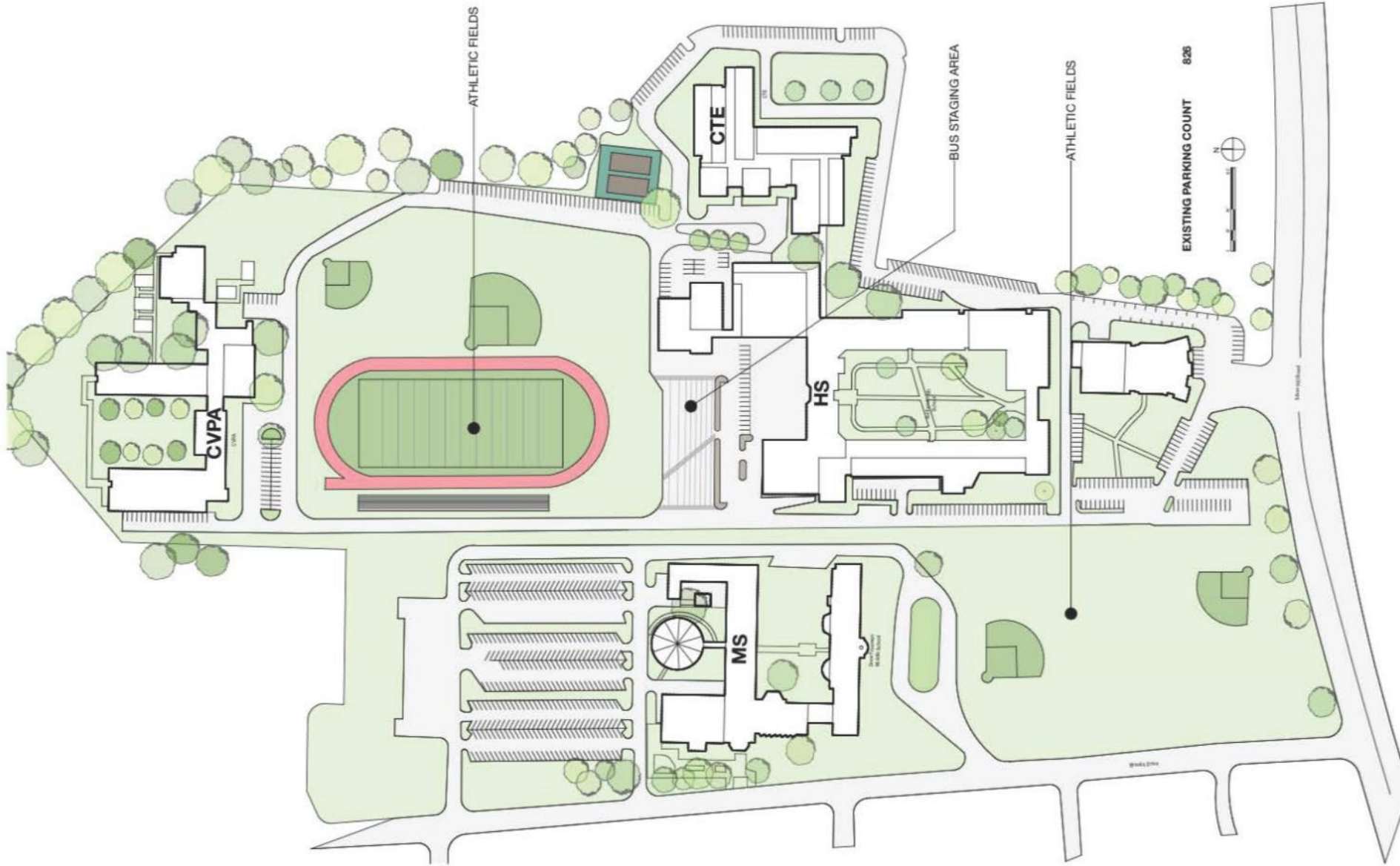
Community &
Citizenship Manager,
Turner Construction

Project Overview

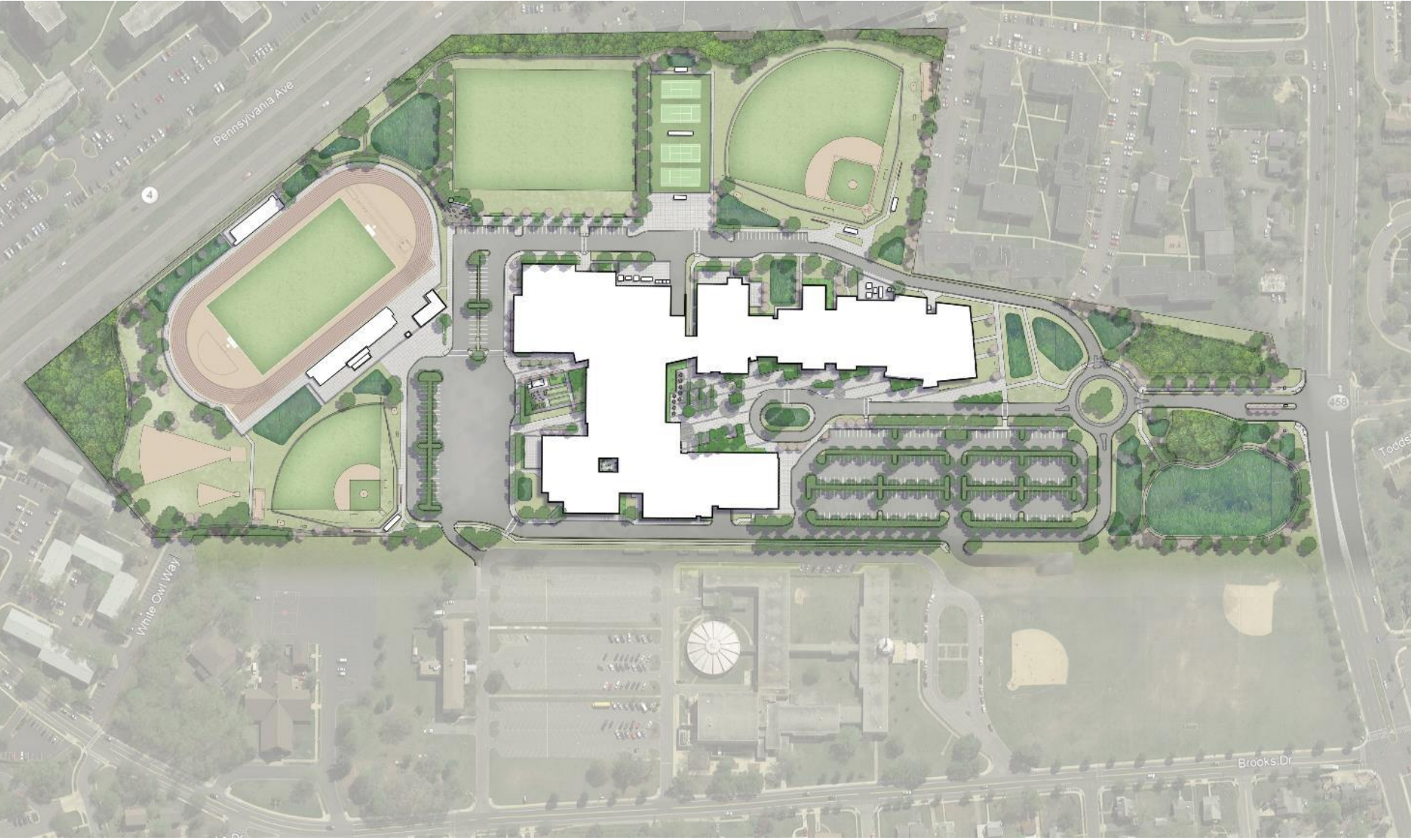


Full replacement of the existing 344,875 SF and 2,477 student Suitland High School Campus consisting of Comprehensive High School (CHS), Center for Visual and Performing (CVPA) Arts and Career Technical Education (CTE). **The proposed design is 389,108 sf with a capacity of 1,500 comprehensive and 500 CVPA students.** The new facility will be one new facility with the comprehensive and the CVPA school programs only. The CTE programs will be relocated to Crossland High School for school year 2022 - 2023, which will be designated as the new southern comprehensive CTE school for the county.

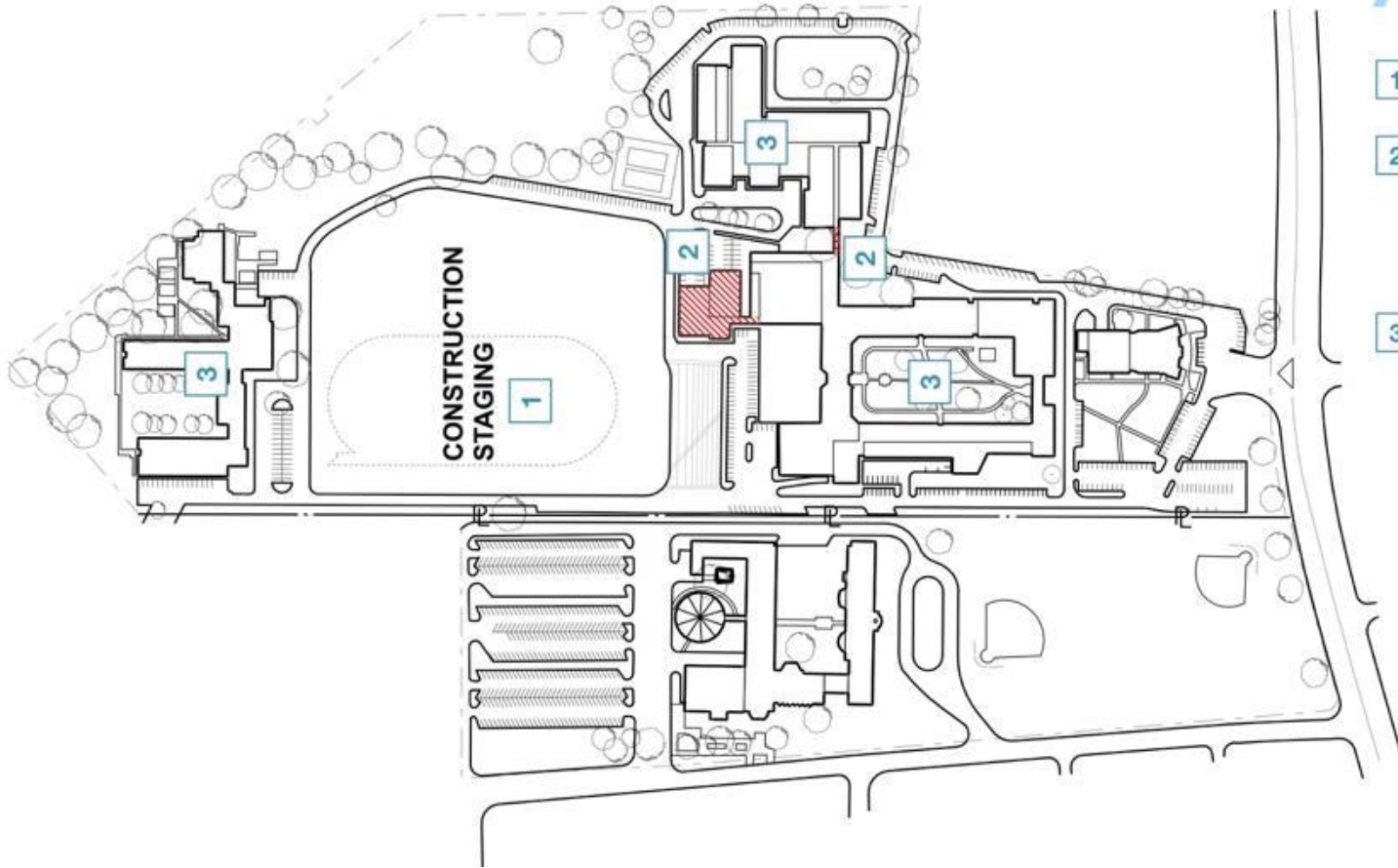
Project Overview: Existing Conditions



Project Overview: Site Plan



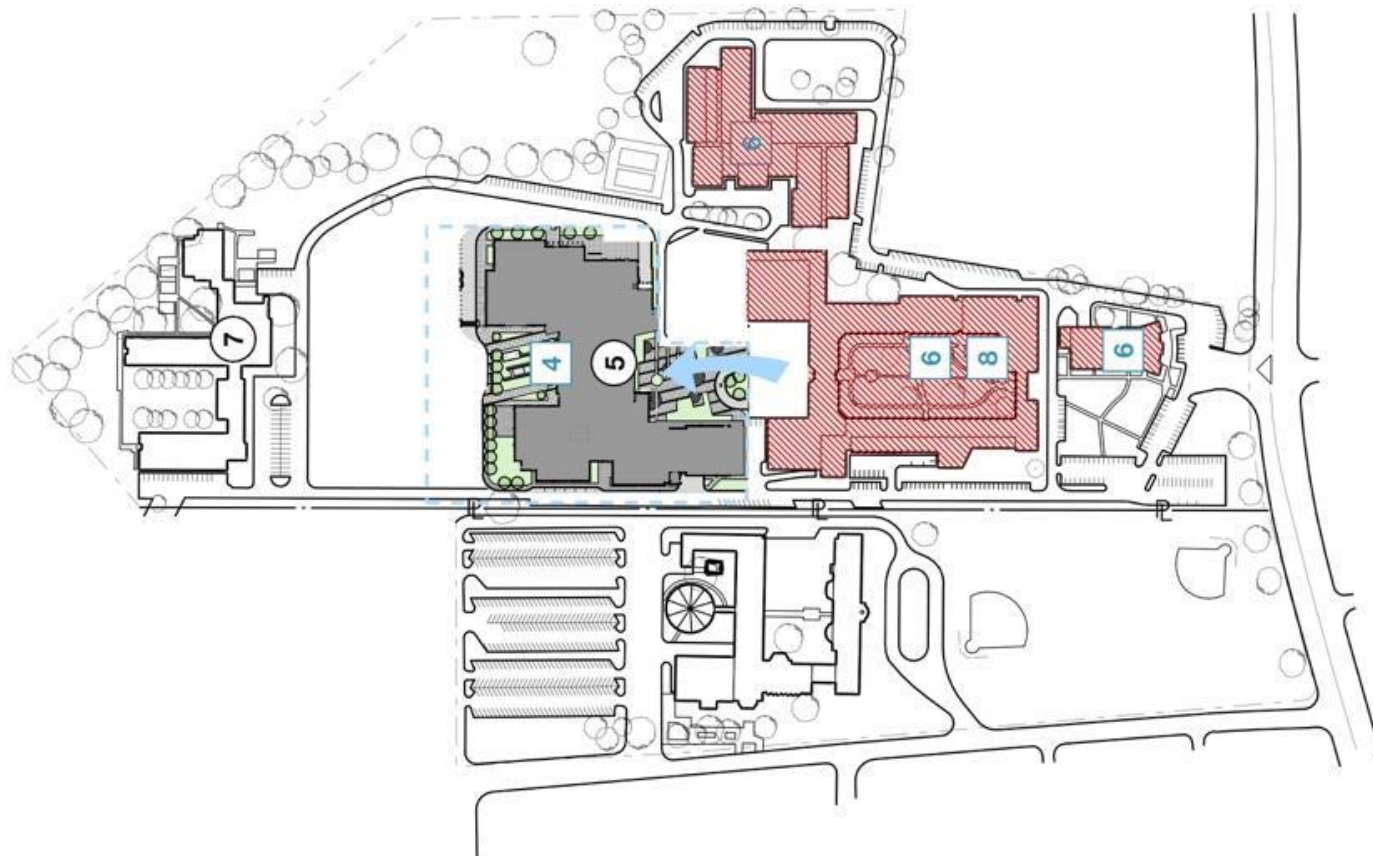
Project Overview: Project Phasing



A PHASE 1

- 1 Enclose construction area
- 2 Demolish stadium, girl's gym and locker rooms & connector between CTE and high school
- 3 Students remain in high school, CTE and Annex building during phase 1 construction

Project Overview: Project Phasing



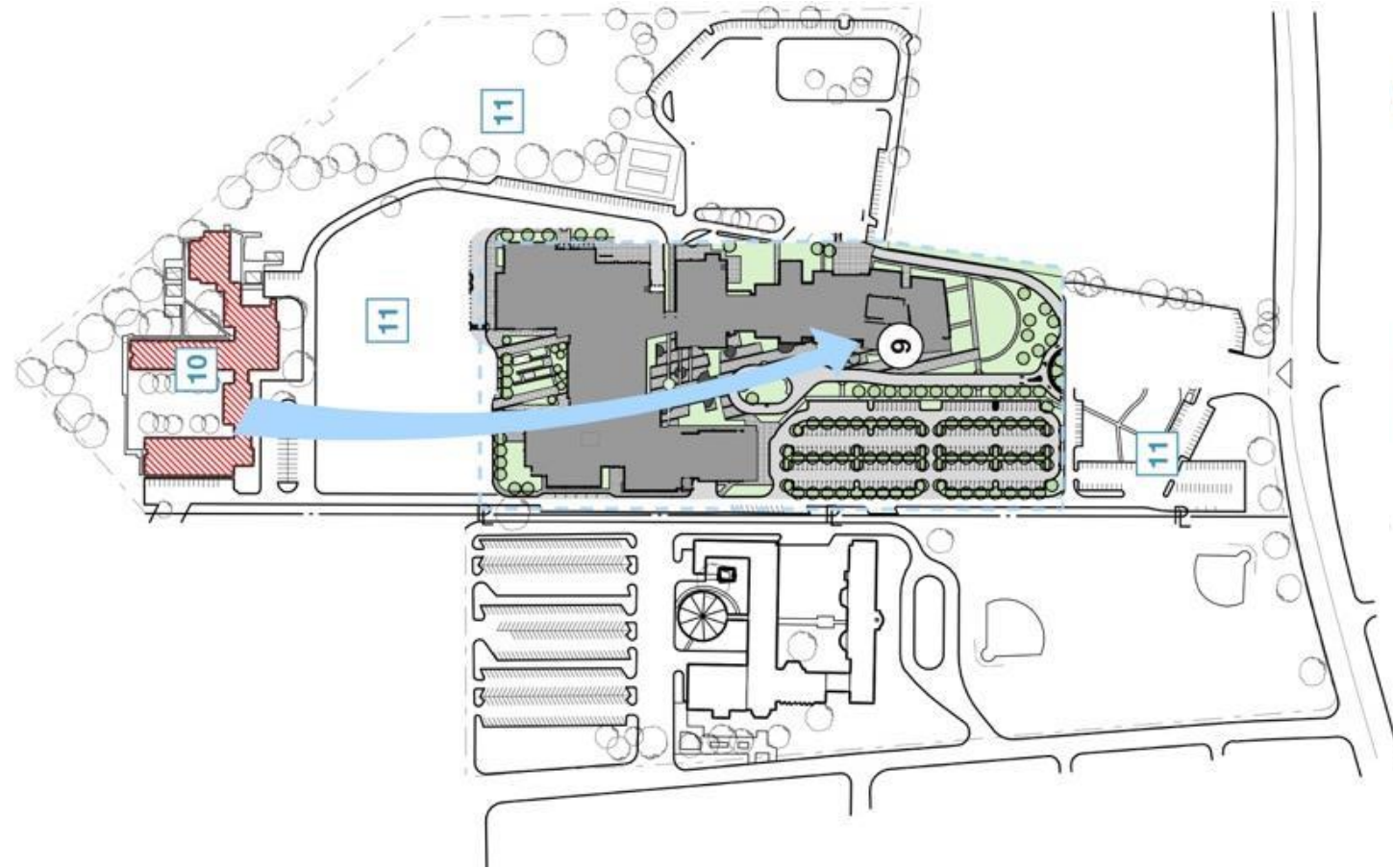
B PHASE 1 & 2

- 4 New high school and shared spaces building completed
- 5 High school students move out of the existing building into new building
- 6 Existing high school, CTE and auditorium is demolished
- 7 CVPA students remain in the Annex
- 8 New CVPA buildings are constructed

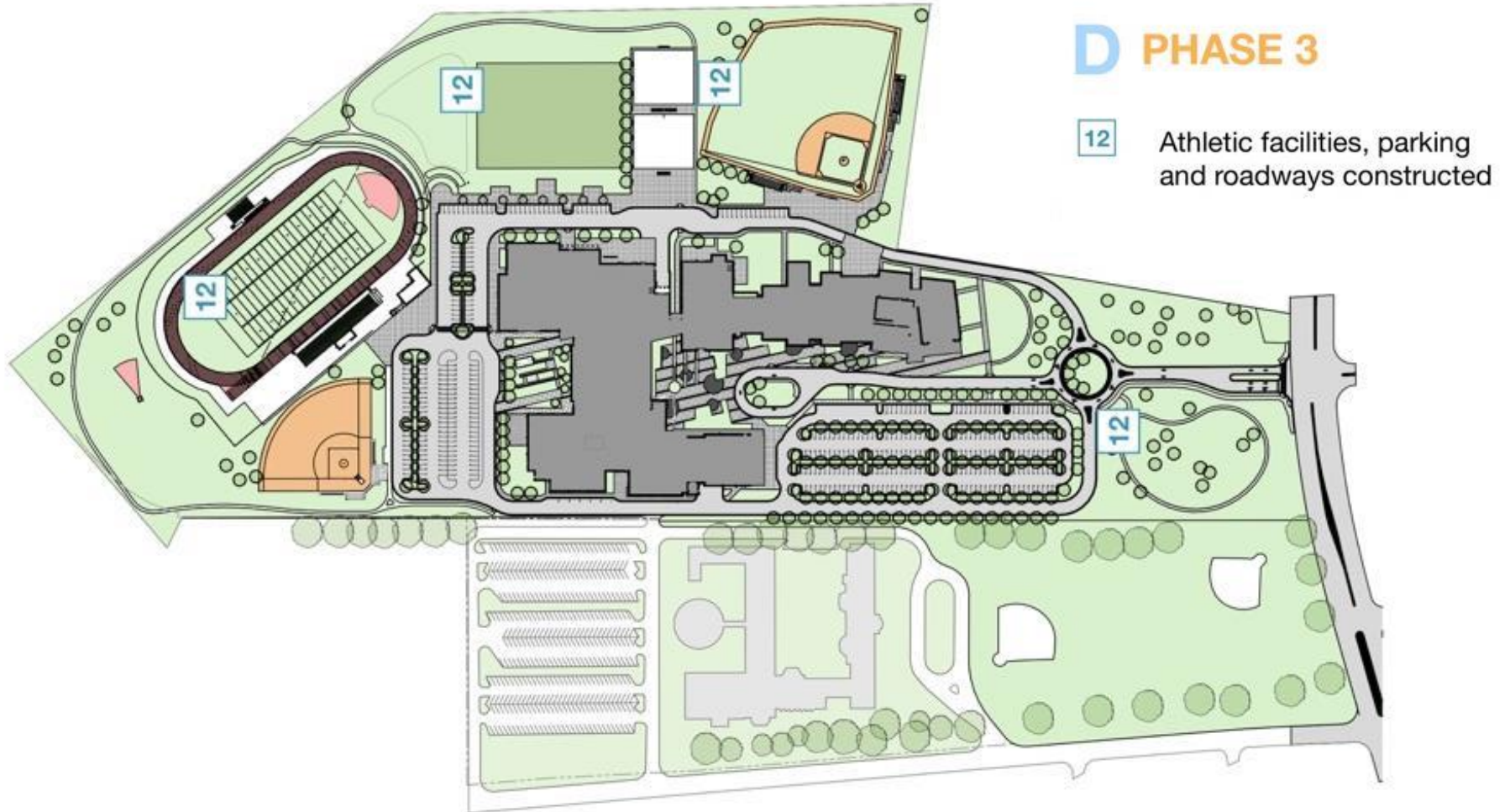
Project Overview: Project Phasing

C PHASE 2 & 3

- 9 CVPA students move out of the Annex and into the new facilities
- 10 Annex is demolished
- 11 Remaining site features are removed



Project Overview: Project Phasing



Project Overview: Floor Plans, Ground/ 1st Floor



Project Overview: Floor Plans, Second Floor



Project Overview: Floor Plans, Third Floor



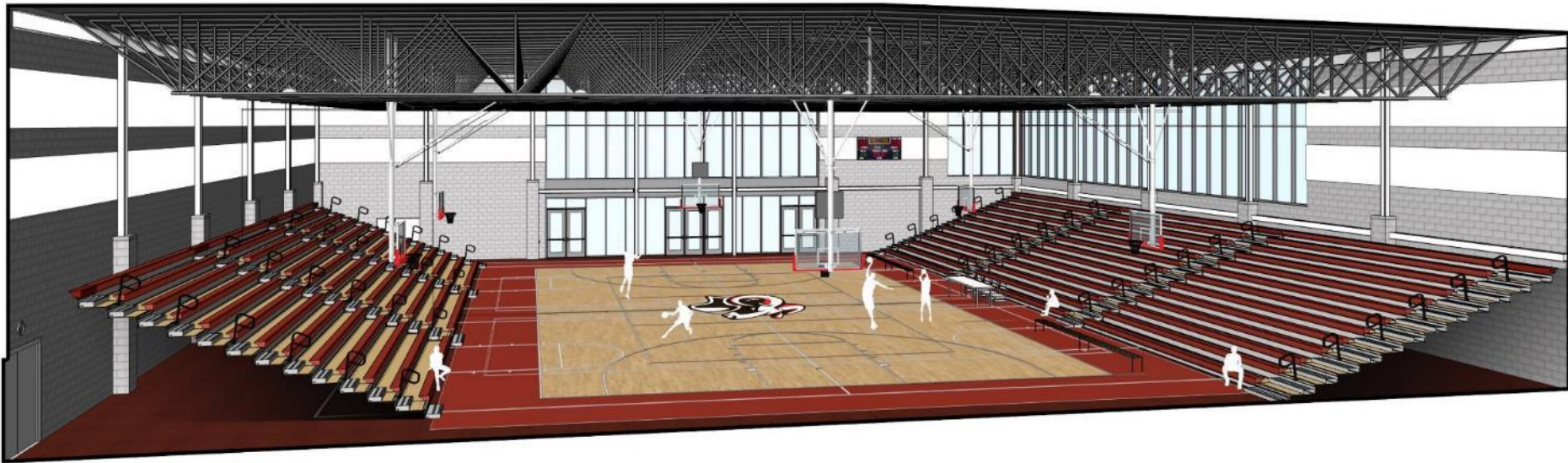
Project Overview: Interior View @ Dining Commons



Project Overview: Interior View @ Media Center



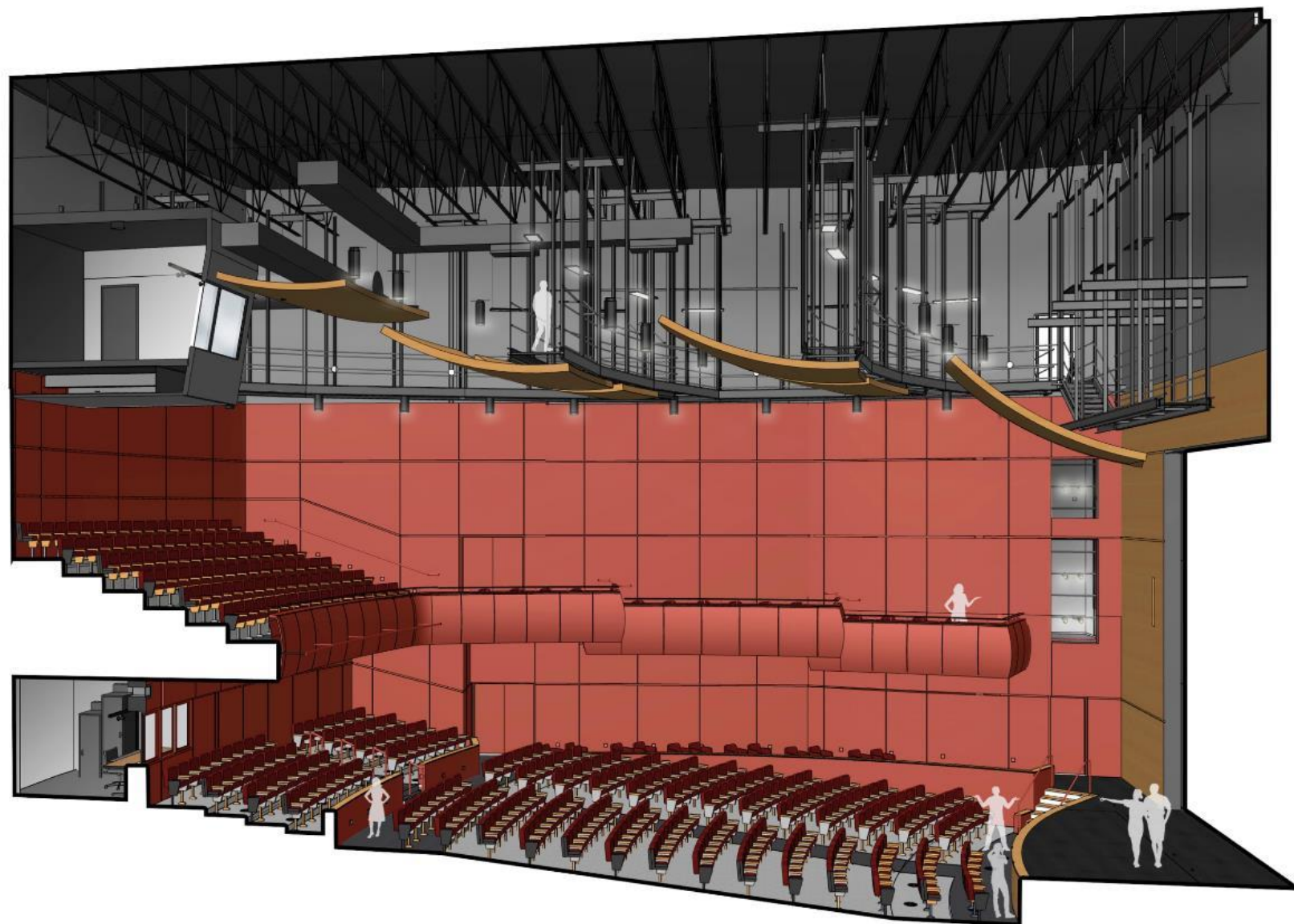
Project Overview: Interior View @ Competition Gymnasium



Project Overview: Interior View @ High School Auditorium Lobby



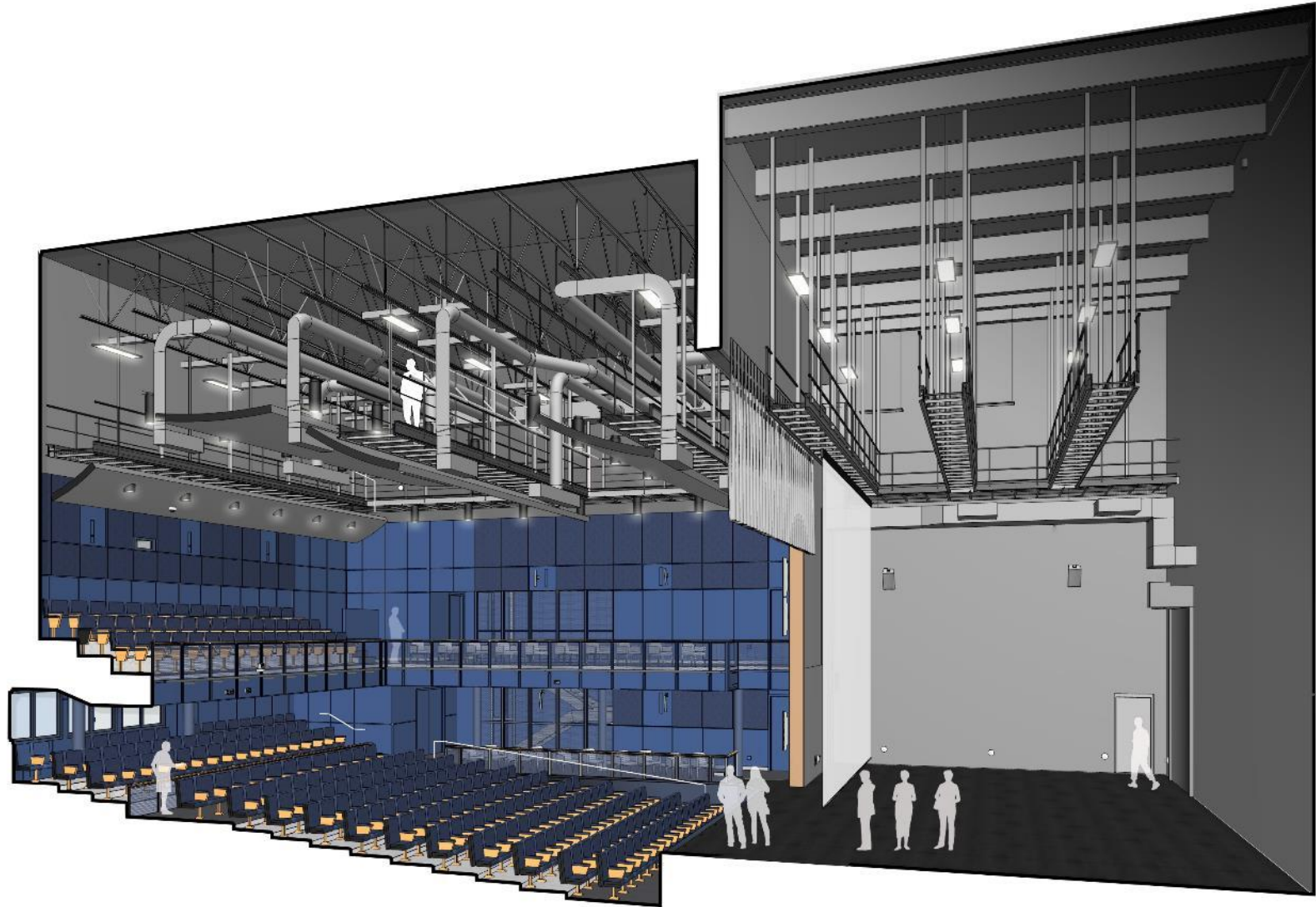
Project Overview: Interior View @ High School Auditorium



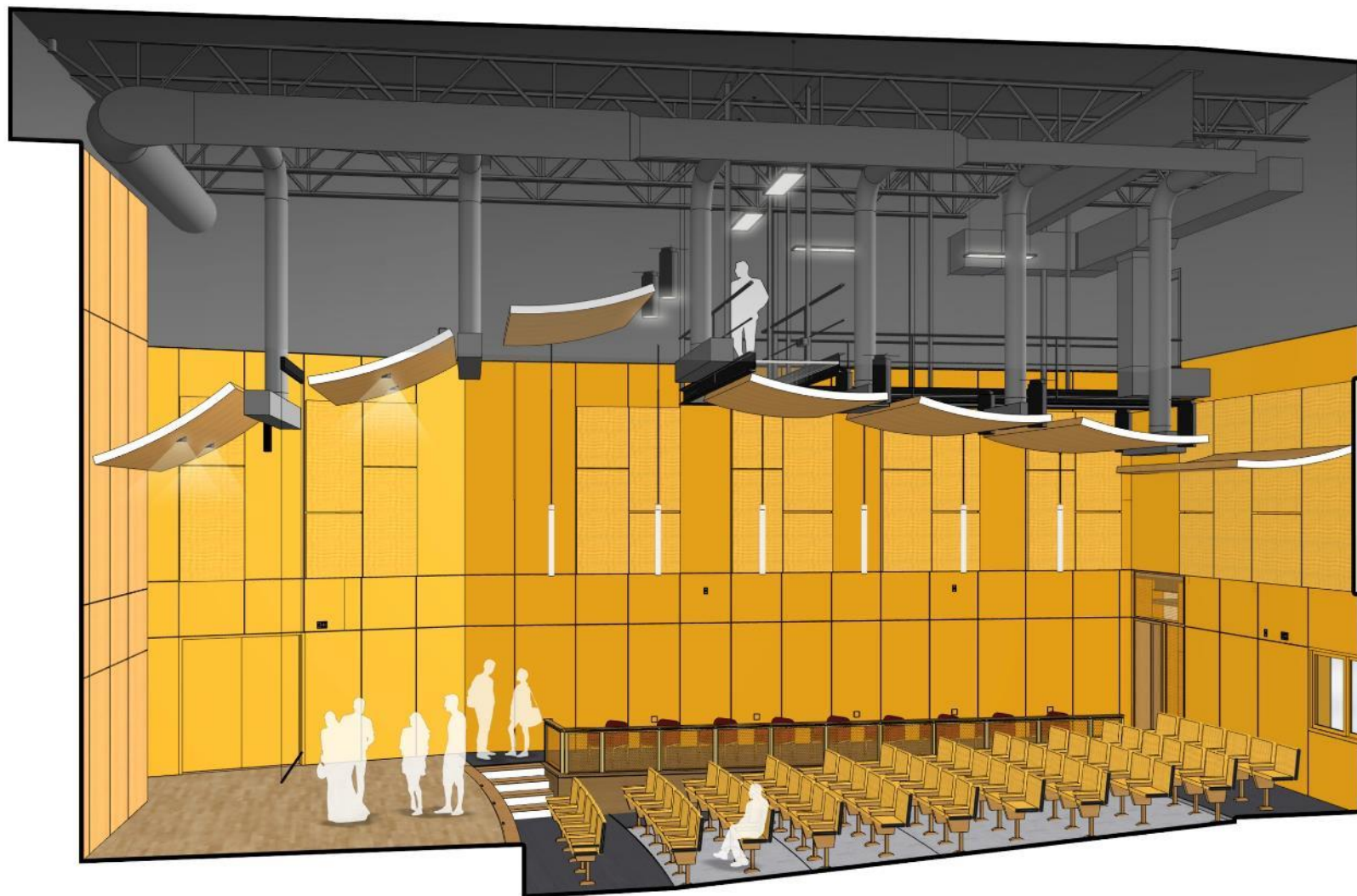
Project Overview: Interior View @ CVPA Performance Lobby



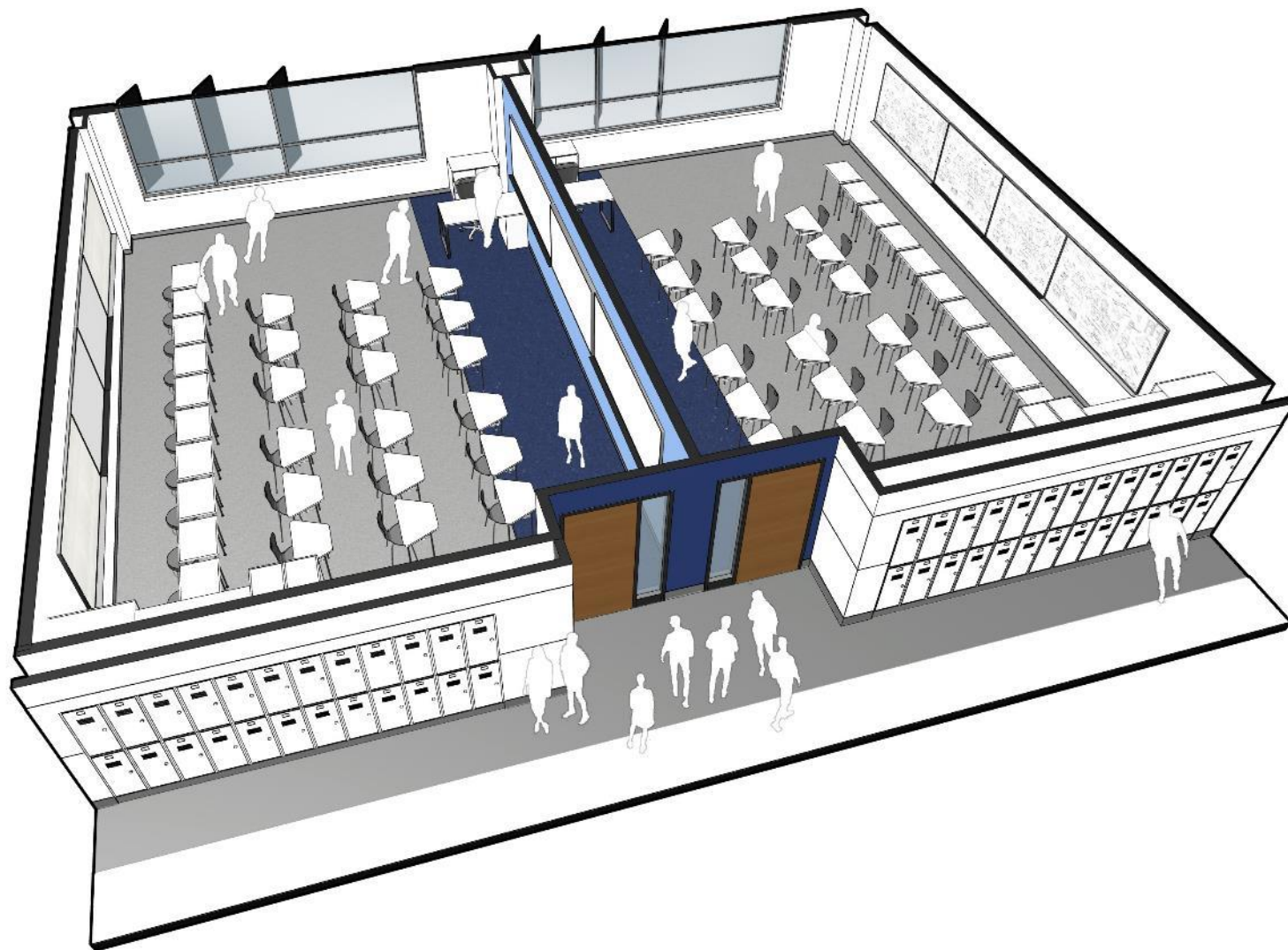
Project Overview: Interior View @ Teaching Theater



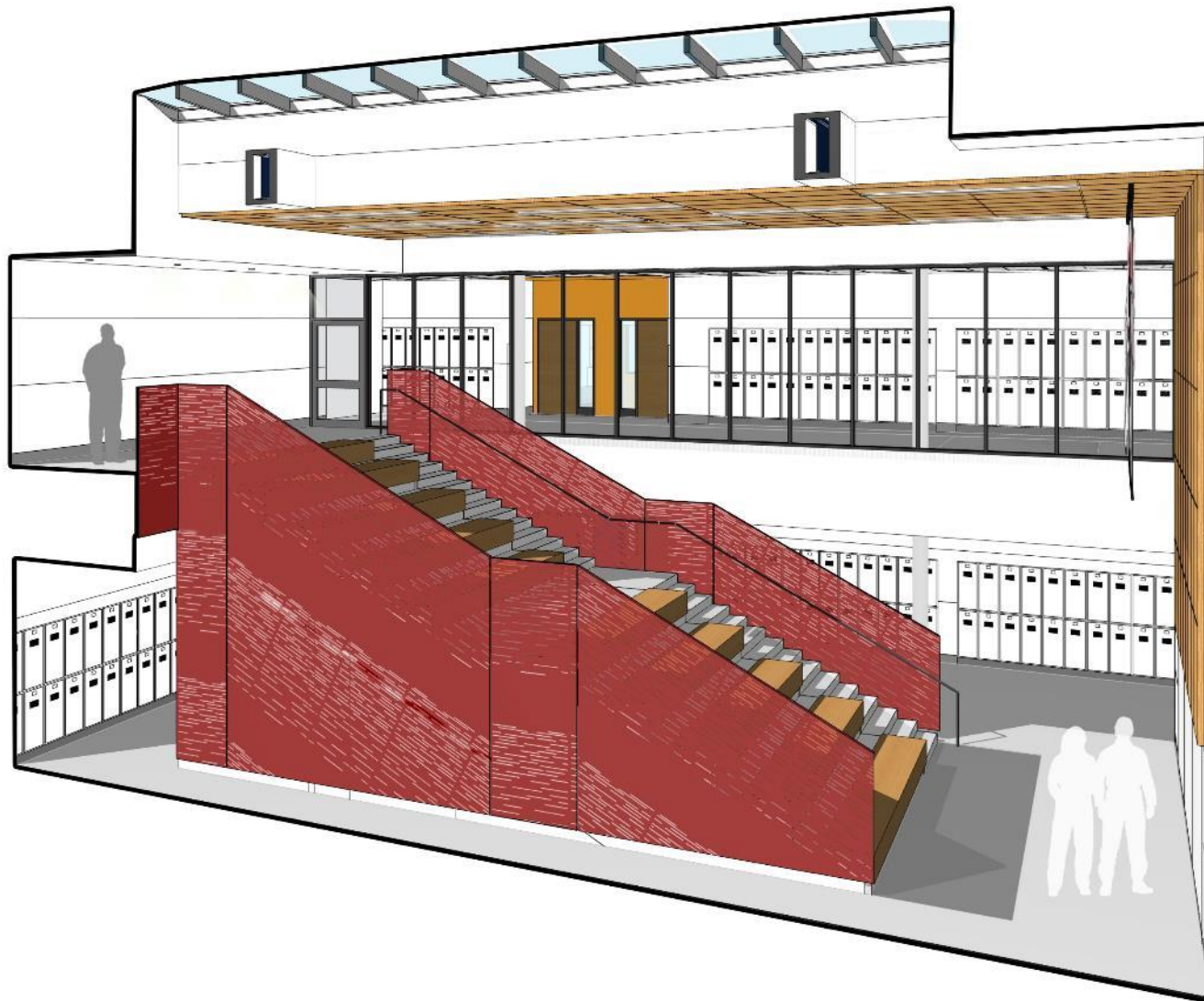
Project Overview: Interior View @ Recital Hall



Project Overview: Interior View @ Typical Classrooms



Project Overview: Interior View @ Learning Steps



Project Overview: Interior View @ Art Commons



Project Overview: Interior View @ Academic Commons



Project Overview: Interior View @ Dance Commons



Project Overview: Exterior View



Project Overview: Exterior View



Project Overview: Exterior View



Project Overview: Exterior View



Project Overview: Exterior View



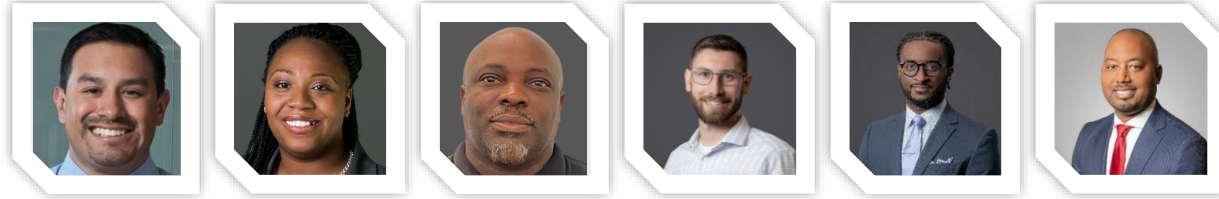
Project Overview: Exterior View



Project Overview: Exterior View



Construction Overview



Turner

Founded in 1902

Global Headquarters: New York City

African-American Led Business Unit
in Washington D.C./Metropolitan Area

#1 Green Builder in the Country

Turner

CORENIC

SUITLAND HS
JOINT VENTURE

CORENIC CONSTRUCTION

Founded in 2009

Prince George's County-Based

MDOT MBE/DBE Certified
General Contracting Firm

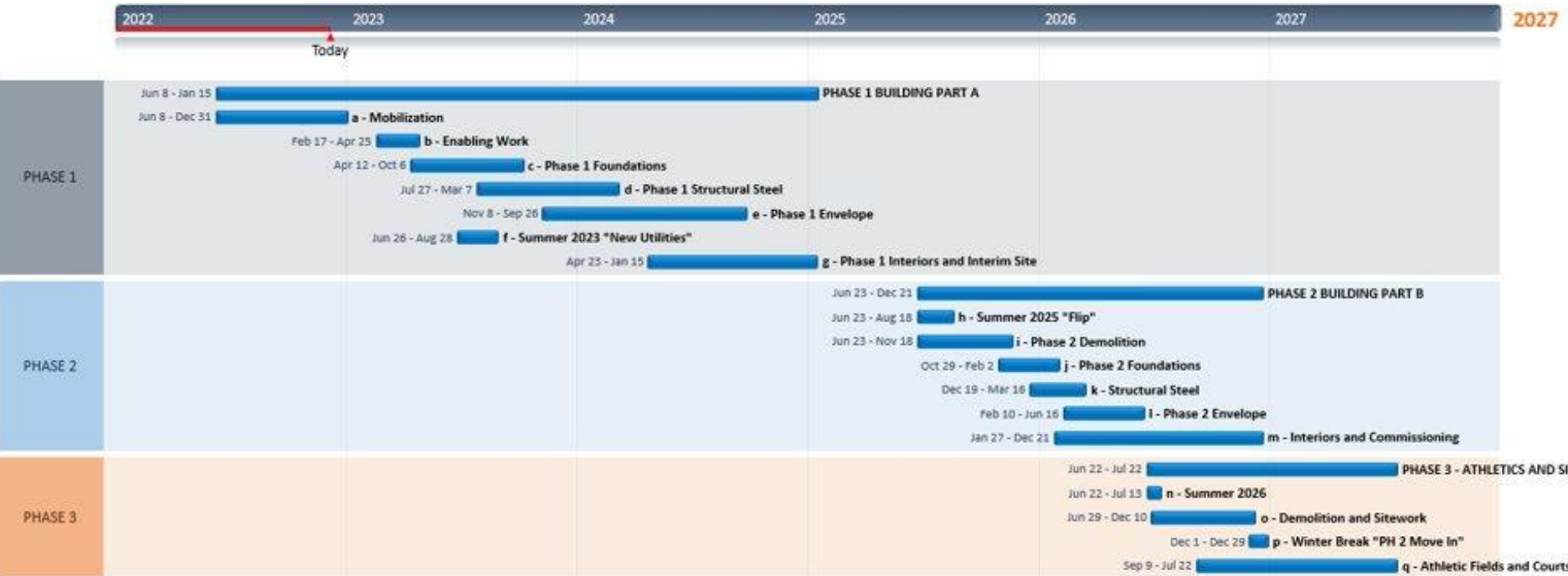
Recognized Leader in Interior
Construction



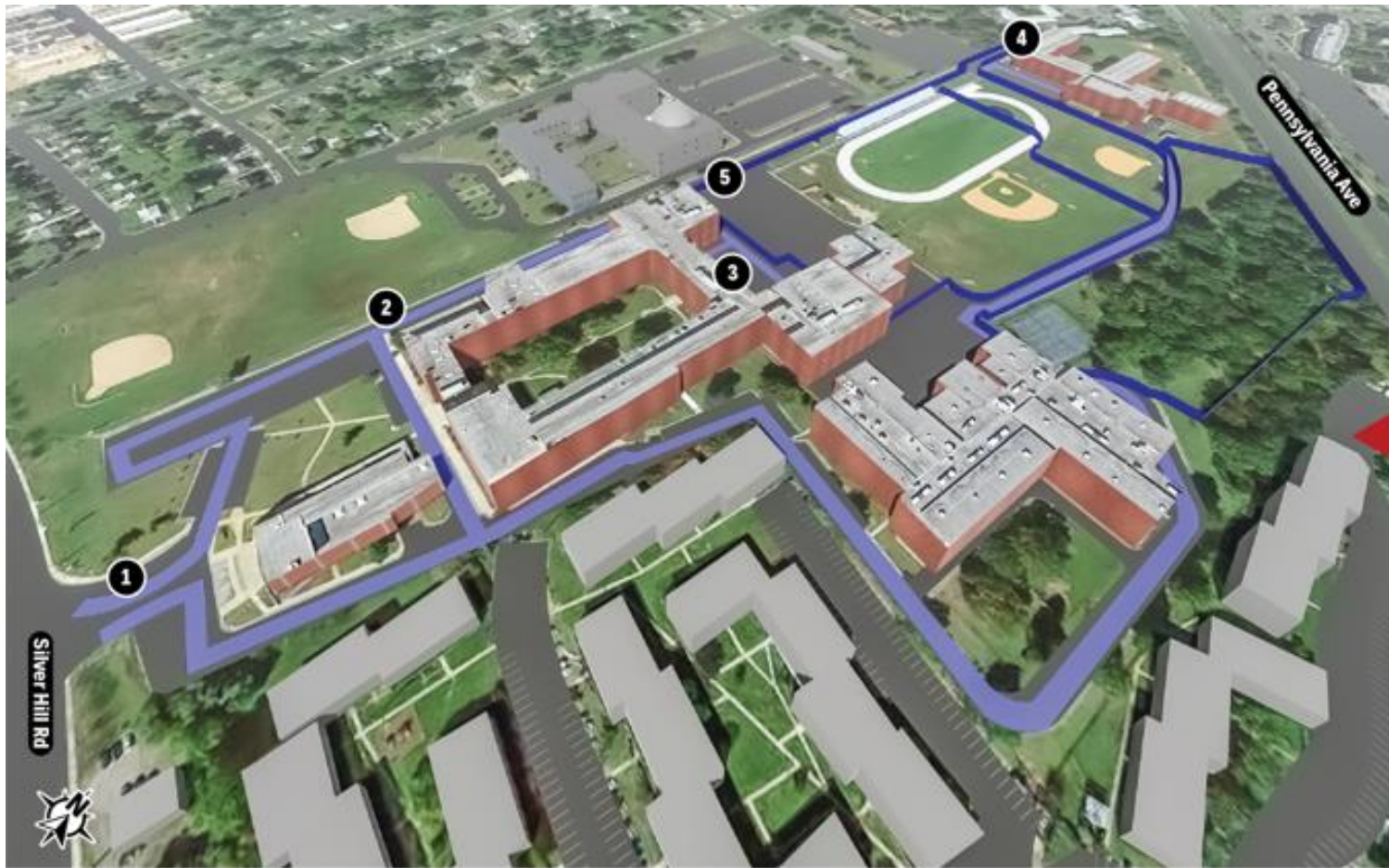
Construction Overview

What has happened?	What is happening?	Next steps
<ul style="list-style-type: none">• Capping and cutting of utilities at auxiliary gym completed.• Abatement of auxiliary gym completed.• Demolition of auxiliary gym up to the foundations completed.• Temporary bus queuing for the start of school established.	<ul style="list-style-type: none">• Demolition of auxiliary gym foundations in progress.• Backfill and grading at auxiliary gym in progress.• Procurement of permits to allow for the earthwork and wet utility scope of work in progress.	<ul style="list-style-type: none">• Perimeter security fencing to be established.• Clearing and grubbing of tree between football field and Penn Ave to be completed.• Temporary sediment pond to be established.• Demolition of bleachers and football field fixtures to be completed.• Installation of new sanitary and water lines to be completed.

Construction Overview: Construction Schedule



Construction Overview: Phase I Construction North



KEY ACTIVITIES

- Establish Site office. Site Utility Investigations
- Site Surveys and Layout. E&S Controls
- Start clearing and grubbing
- Set up Big Room (Project Team)
- Set up Perimeter Fence, Gates and Covid-19 Procedures

LEGEND

1. School Entrance
2. School Traffic Route
3. Bus Staging Area
4. Construction Entrance
5. Construction Fence

2022

May Jun Jul Aug Sep Oct Nov Dec

2023

Jan Feb Mar Apr May Jun Jul Aug Sep Oct Nov Dec

2024

Jan Feb Mar Apr May Jun Jul Aug Sep Oct Nov Dec

2025

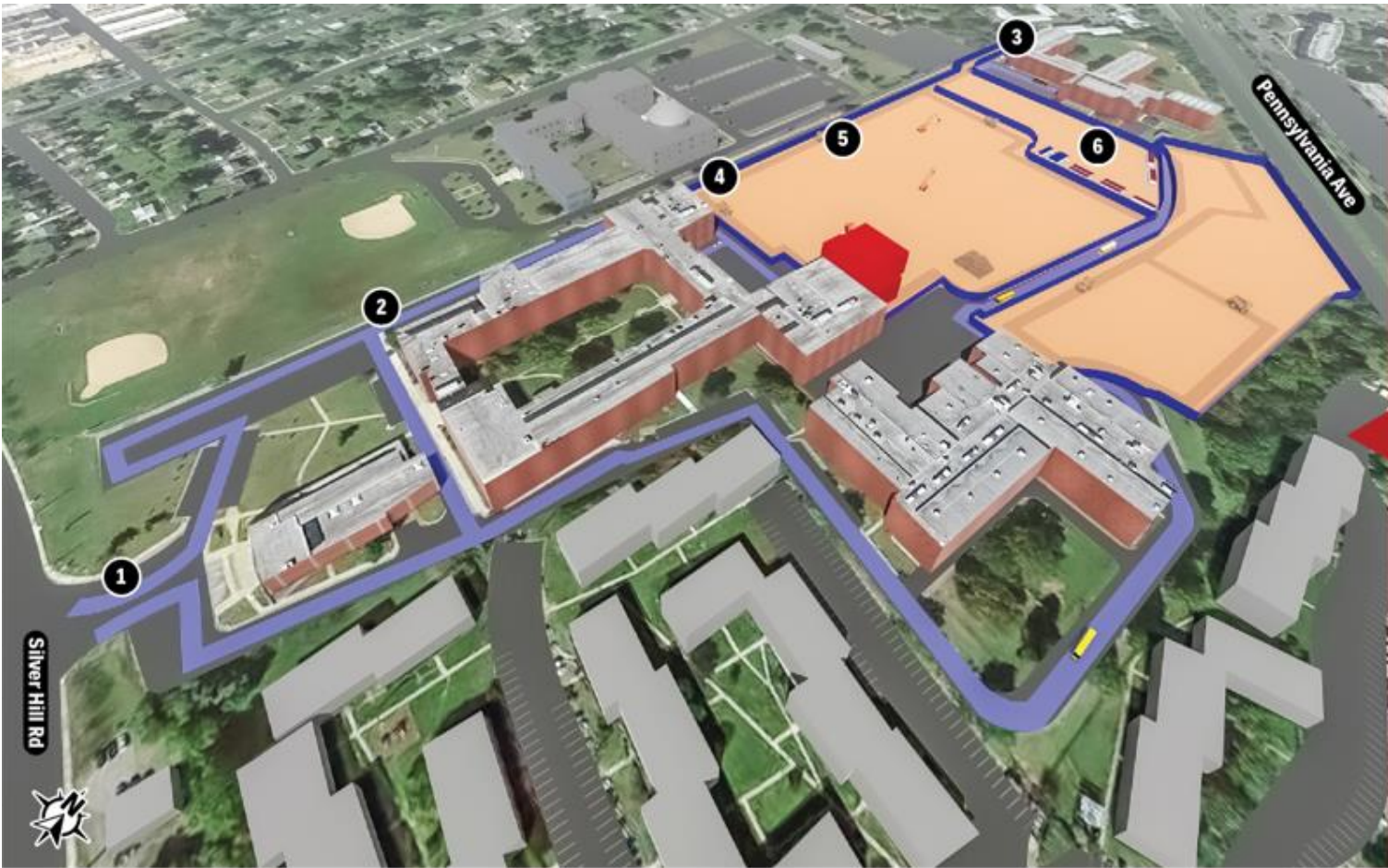
Jan Feb Mar Apr May Jun Jul Aug Sep Oct Nov Dec

2026

Jan Feb Mar Apr May Jun Jul



Construction Overview: Phase I Construction North



KEY ACTIVITIES

- Construct PH 1 Storm water BMPS
- Establish temporary roads, lots, and drives
- Site Demolition at building pad
- Set up off-site Laydown Space
- Set up off-site Parking Area
- Underground Utility Locating

LEGEND

1. School Entrance
2. School Traffic Route
3. Construction Entrance
4. Construction Fence
5. Construction Traffic Route
6. Construction Trailers and Construction Parking

2022

2023

2024

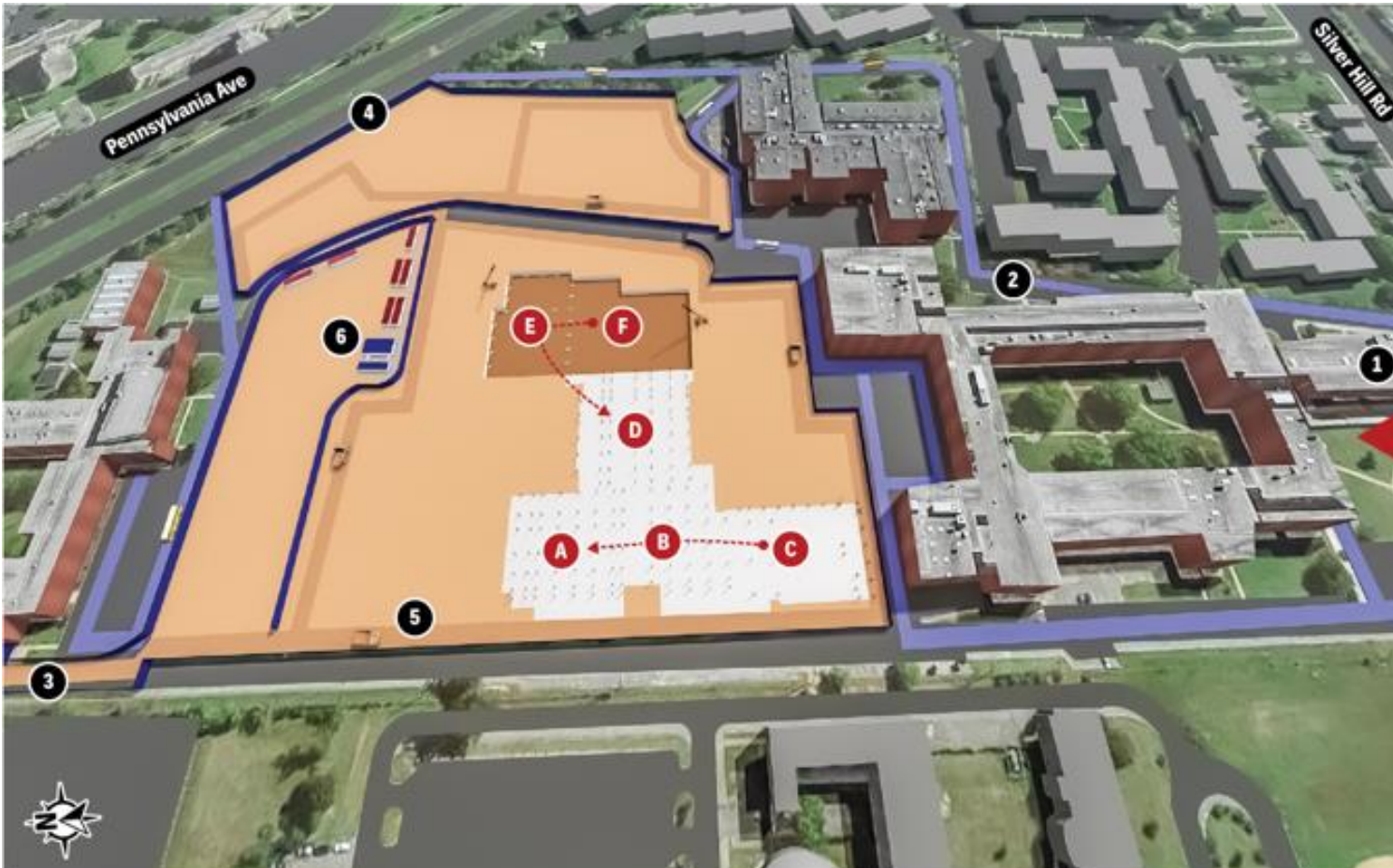
2025

2026

May Jun Jul Aug Sep Oct Nov Dec Jan Feb Mar Apr May Jun Jul Aug Sep Oct Nov Dec Jan Feb Mar Apr May Jun Jul Aug Sep Oct Nov Dec Jan Feb Mar Apr May Jun Jul



Construction Overview: Phase I Construction North



KEY ACTIVITIES

- Foundation concrete, under slab utilities, concrete slab, steel structure
- Flow of Work C - B - A
- Flow of Work F - E - D

LEGEND

1. School Entrance
2. School Traffic Route
3. Construction Entrance
4. Construction Fence
5. Construction Traffic Route
6. Construction Trailers and Construction Parking

2022

2023

2024

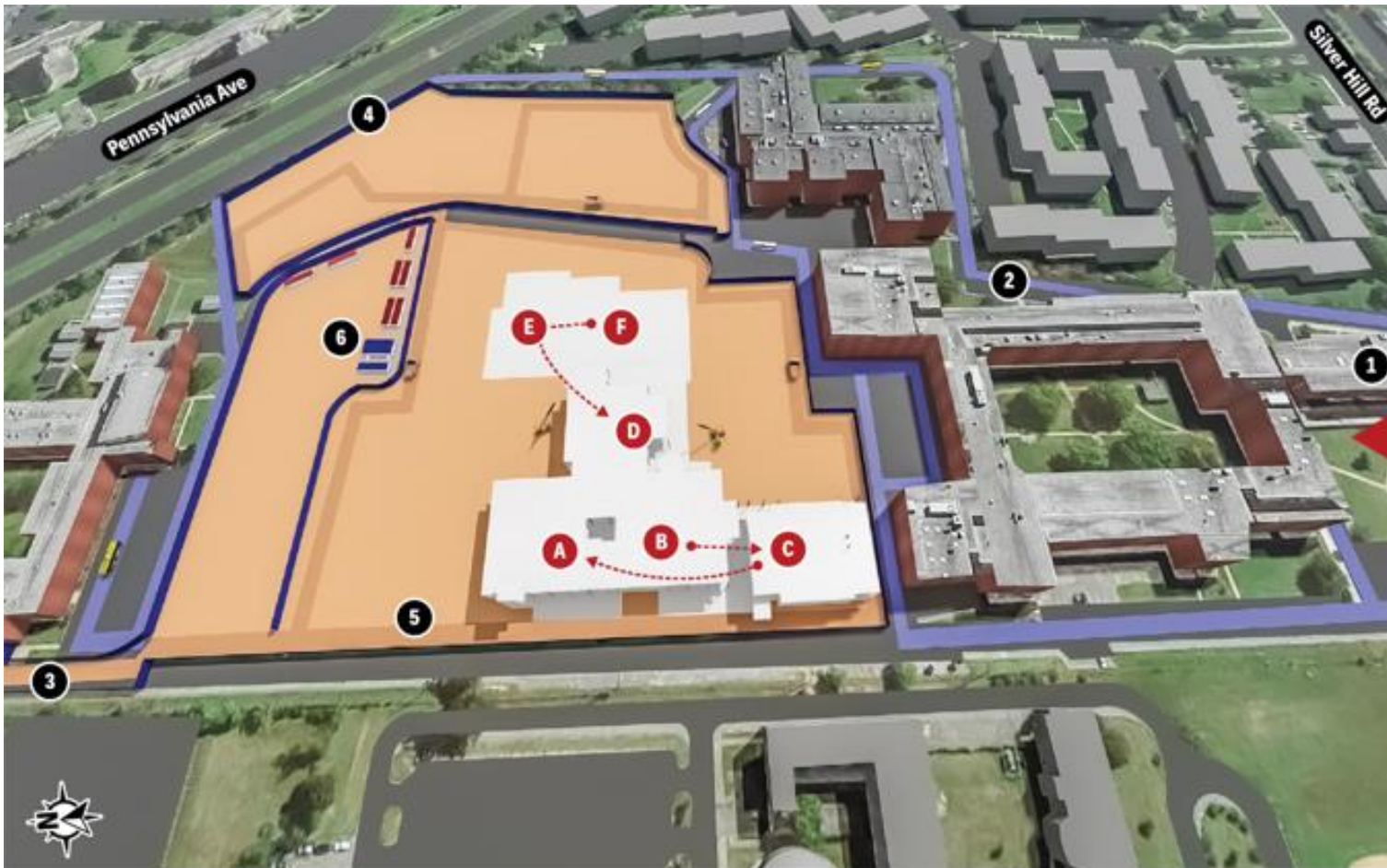
2025

2026

May Jun Jul Aug Sep Oct Nov Dec Jan Feb Mar Apr May Jun Jul Aug Sep Oct Nov Dec Jan Feb Mar Apr May Jun Jul



Construction Overview: Phase I Construction North



KEY ACTIVITIES

- Erect steel structure
- Two crane locations anticipated
- Flow of Work F - E - D
- Flow of Work B - C - A

LEGEND

1. School Entrance
2. School Traffic Route
3. Construction Entrance
4. Construction Fence
5. Construction Traffic Route
6. Construction Trailers and Construction Parking

2022

2023

2024

2025

2026

May Jun Jul Aug Sep Oct Nov Dec Jan Feb Mar Apr May Jun Jul Aug Sep Oct Nov Dec Jan Feb Mar Apr May Jun Jul



Construction Overview: Progress Photos



Communications & Engagement



Communications

- Community Meetings: Spring and Fall
- Construction Notifications
- On-site Time Lapse Videos
- Capital Programs Newsletter

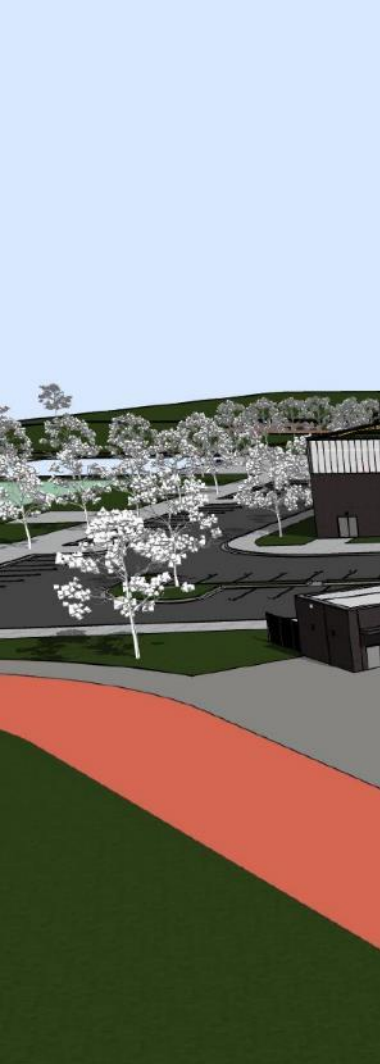
Community Engagement

- Subcontractor Outreach
- Student Engagement Opportunities
- Groundbreaking and Topping Out
- Community and Dignitary Tours
- Alumni Outreach and Programming

Communications & Engagement

Upcoming Events

- SHS Student Presentation: The New Suitland High School
- Subcontractor Meet & Greet with the Primes (Q1 2023)



We want to hear from you.

- Questions and Answers (Q&A)
- Email us at capital.programs@pgcps.org
- Thank you!