

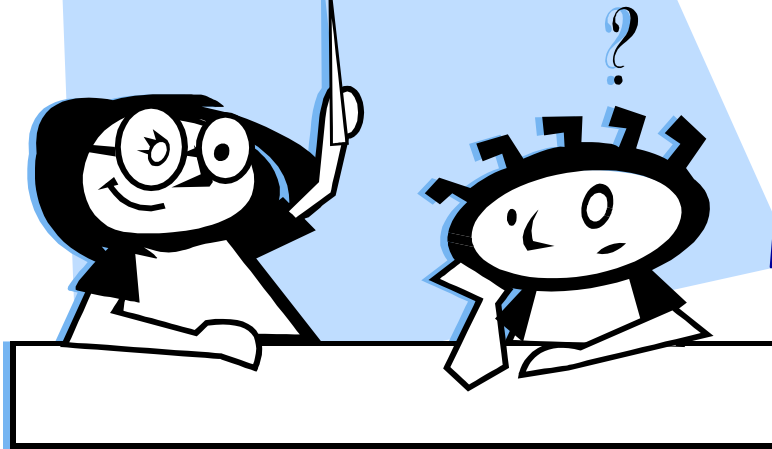
THE SCHOLARSHIP COMMITTEE OF THE CLASS OF 2009 IS SPONSORING

HSA PREP

BIOLOGY

$$2 \times 4 = 8$$

$$2 + 4 = 6$$



ALGEBRA

WHERE: CHARLES HERBERT FLOWERS HIGH SCHOOL

WHEN: EVERY MONDAY FROM 4:30 pm - 6:30 pm
March 20 - May 15, 2006

COST: \$40.00
Cash/ Money Orders*/No Checks

REGISTRATION: MS.PAYNE, Front Office, Between 11:00 am-1:00 pm

PAYMENT METHOD: CASH/ MONEY ORDER*/NO CHECKS

*Money Orders payable to Parents Committee 2009

TRANSPORTATION: Transportation WILL NOT be provided.

ALGEBRA

BIOLOGY