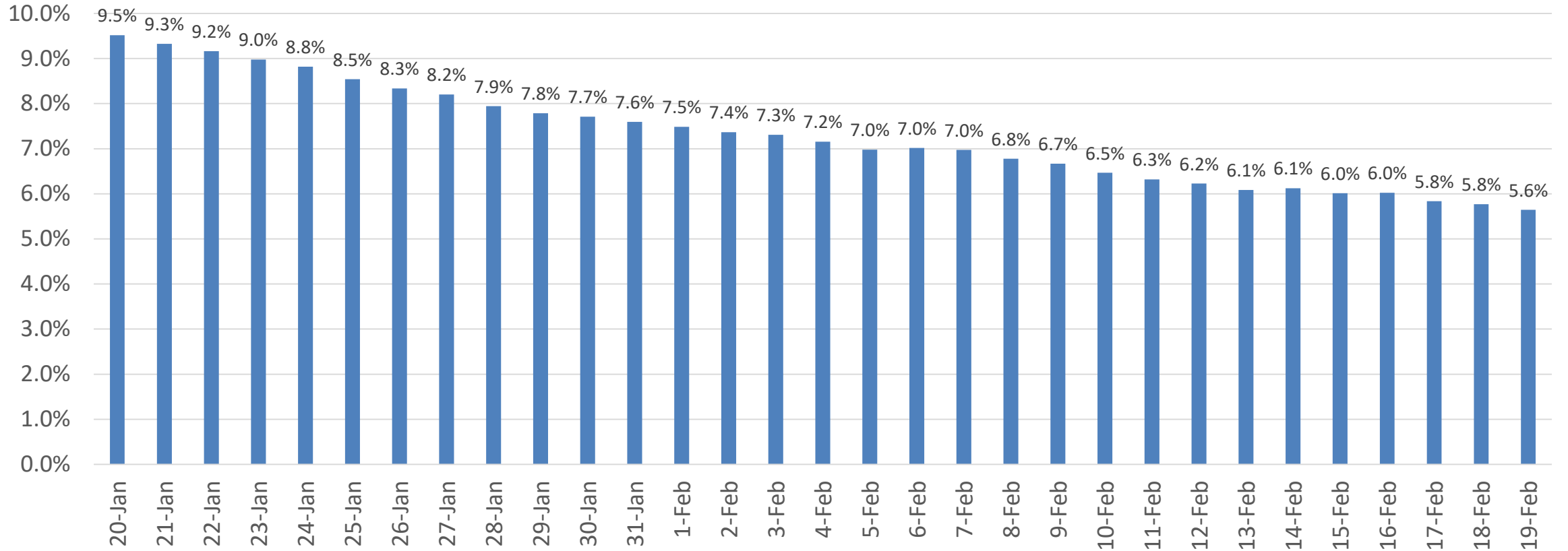


# Percent of Positive COVID-19 Tests\* (14-days average)

## Prince George's County Percent Positive Tests

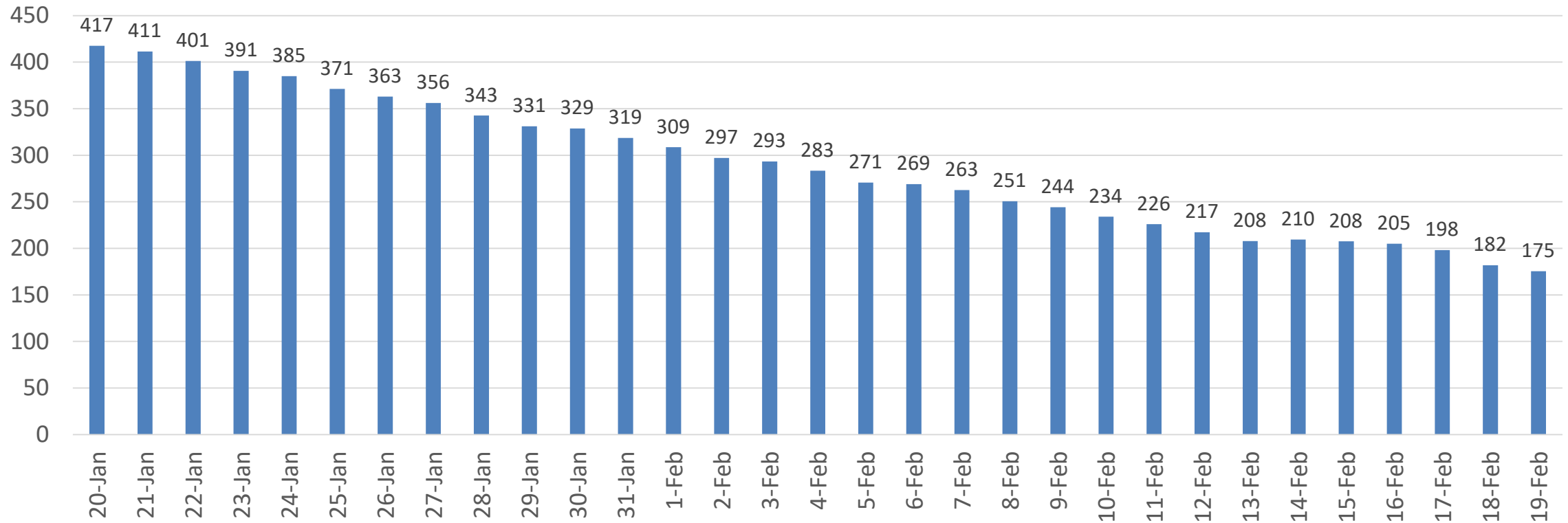


\*Based on Lab Collection Date

Data as of 2/23/21

# COVID-19 Cases\* Prince George's County (14-day average)

Prince George's County  
Average New COVID-19 Cases per Day

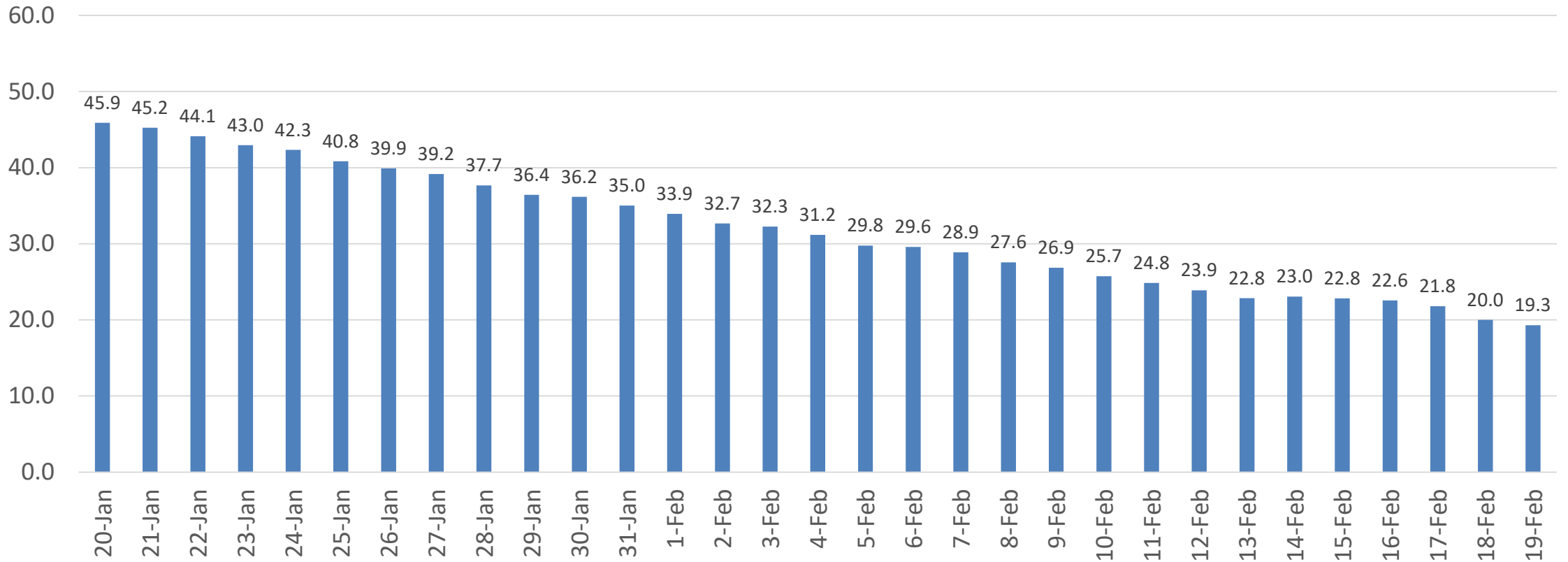


\*Based on Lab Collection Date

Data as of 2/23/21

# COVID-19 Average Daily Case Rate\* (14-day average)

## Prince George's County Average New Cases per 100,000 population



\*Based on Lab Collection Date

Data as of 2/23/21