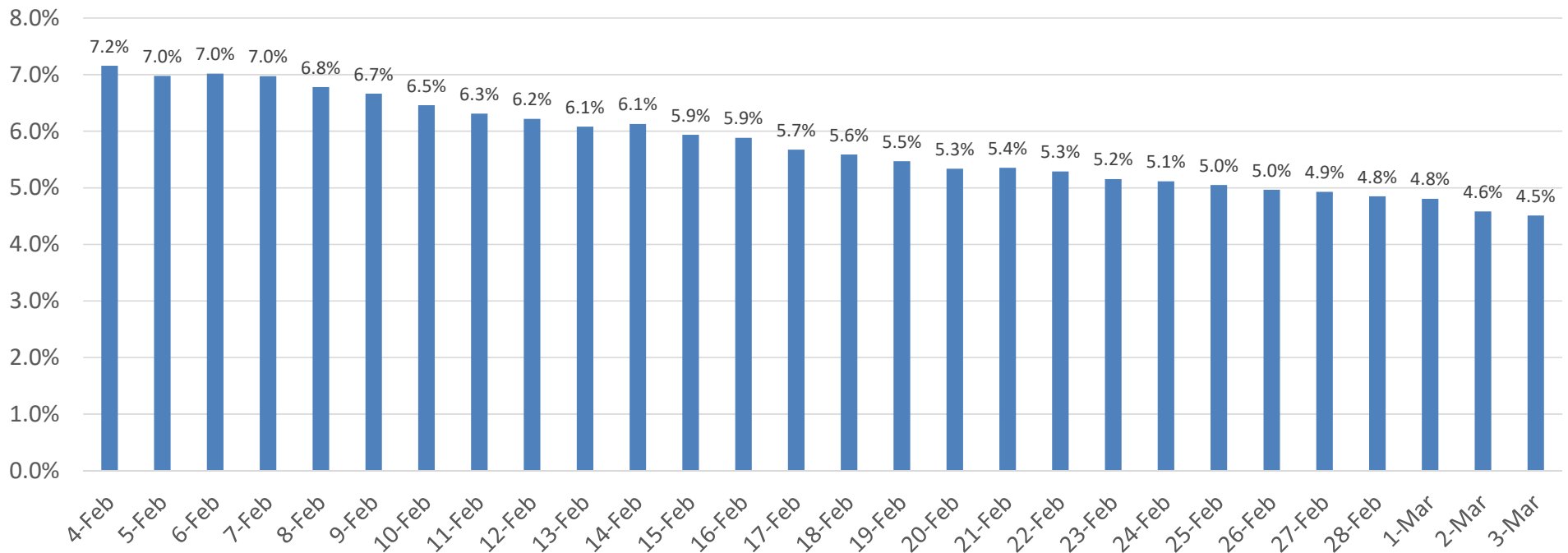


# Percent of Positive COVID-19 Tests\* (14-days average)

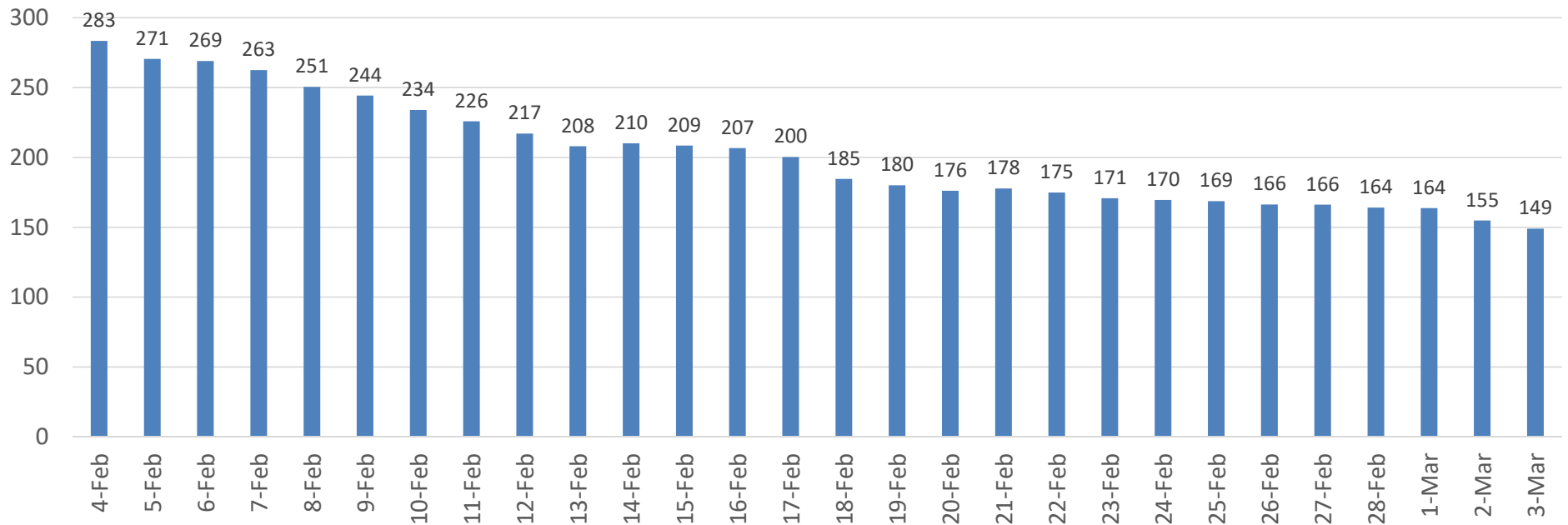
## Prince George's County Percent Positive Tests



\*Based on Lab Collection Date  
Data as of 3/7/21

# COVID-19 Cases\* Prince George's County (14-day average)

Prince George's County  
Average New COVID-19 Cases per Day

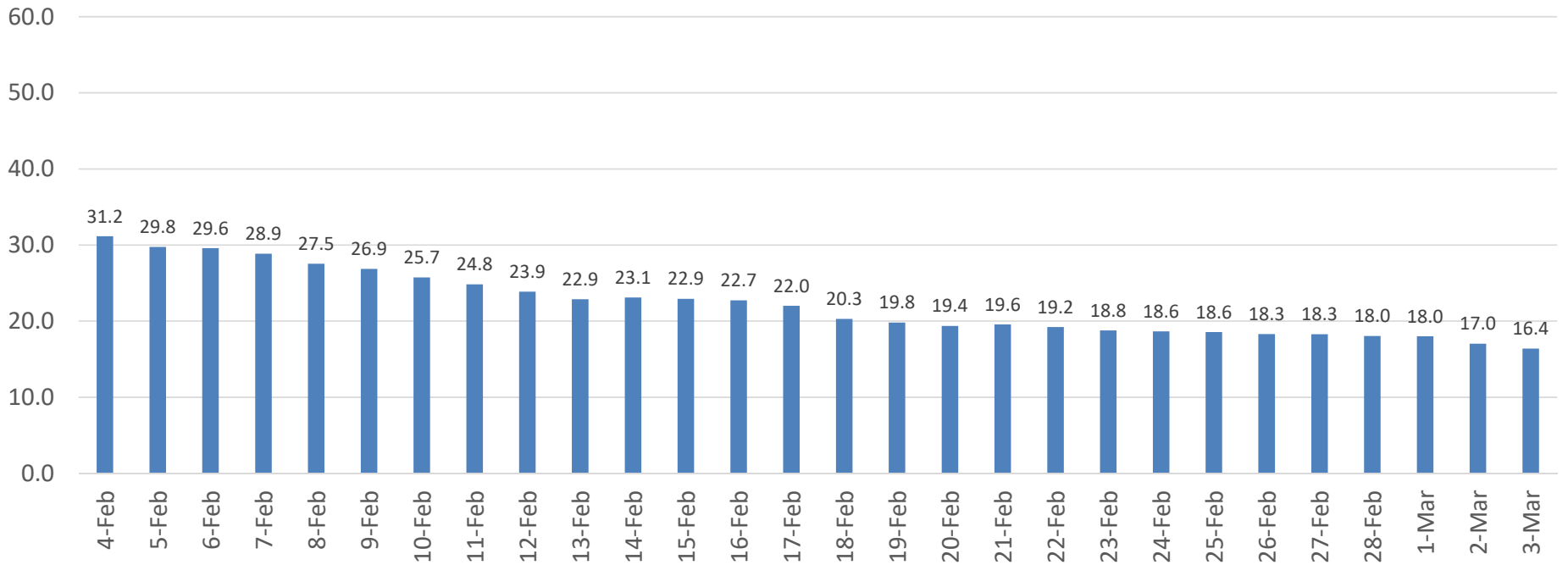


\*Based on Lab Collection Date  
Data as of 3/7/21



# COVID-19 Average Daily Case Rate\* (14-day average)

Prince George's County  
Average New Cases per 100,000 population



\*Based on Lab Collection Date  
Data as of 3/7/21