

# Prince George's COVID-19 Metrics

Risk Level	Percent of Positive Tests	Infection Rate	Average Daily Case Rate per 100,000 population	Available Hospital Capacity
Low	0-3%	<0.9	1-5	>49.9%
Medium	3.1%-5%	0.9-1.10	5-10	40-49.9%
High	5.1%-10%	1.10-1.39	10-25	30-39.9%
Critical	>10	>1.39	>25	<30%
<b>3/18/22</b>	<b>1.26%*</b>	Unavailable	<b>3.0</b> (as of 3/14)	<b>50.3%</b> (as of 3/17)

The [Maryland State Department of Education](https://www.mde.state.md.us/) recommends that if the number of laboratory confirmed cases of COVID-19 meets the definition of an outbreak, the response decisions, including possible individual classroom or school/child care program closure and recommendations for COVID-19 testing of staff and students/children will be made by the Local Health Department. Given this guidance and high county vaccination uptake, unless criteria for countywide closure is met, our focus will be on case and contact identification and management within individual schools.

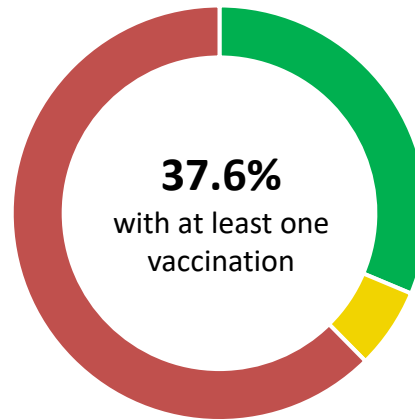
\* CDC data reported from <https://covid.cdc.gov/covid-data-tracker/>; local updates are delayed due a system outage at the Maryland Department of Health.  
Data as of 3/18/2022

# COVID-19 Community Transmission and Vaccination

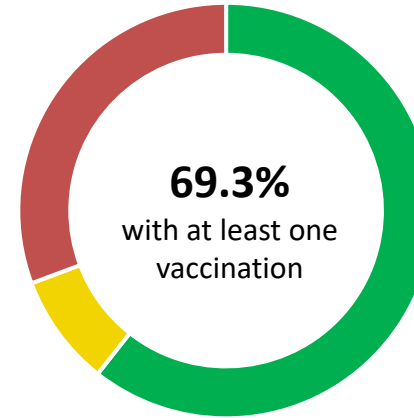
Per the [CDC updated guidance for COVID-19 Prevention in K-12 Schools](https://www.cdc.gov/media/releases/2021/s0915-covid-19-schools.html), vaccination is considered the leading prevention strategy for those who are eligible, and **Prince George's County exceeds the percentage of U.S. vaccinations for ages 12 and above**. The CDC also emphasizes using multiple prevention strategies together consistently, included universal indoor masking, as needed based on the level of community transmission and vaccine coverage.

	CDC 7-day Metrics: Prince George's County*	CDC Transmission Level*
New Cases per 100,000 persons in the past seven days (cumulative)	<b>26.94</b> (3/10/22-3/16/22)	<b>Moderate</b> (10.00-49.99)
Percentage of positive tests in the past seven days	<b>1.26%</b> (3/8/22-3/14/22)	<b>Low</b> ( <b>&lt;5.00%</b> )

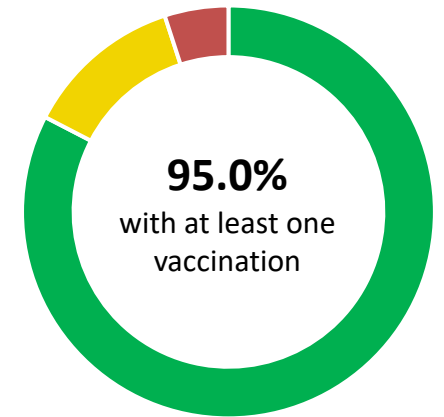
Resident Vaccination Status  
Ages 5-9 Years\*\*



Resident Vaccination Status  
Ages 10-19 Years\*\*



Resident Vaccination Status  
Population Ages 12+\*



■ Completed ■ Partial ■ Unvaccinated

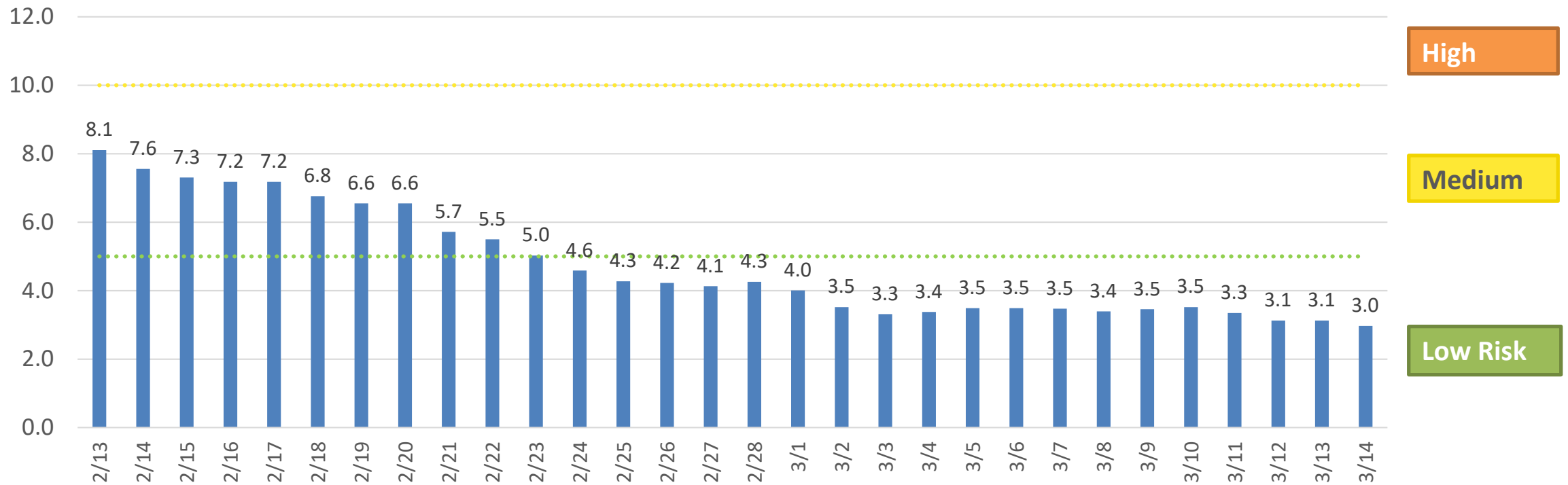
\*CDC data reported from: <https://covid.cdc.gov/covid-data-tracker> accessed 3/18/2022.

\*\* Local vaccination data reported as of 3/17/2022

# Average Daily Case Rate (7-day Average by test date)

The average daily case rate at the beginning of this week was 3.0 new cases per 100,000 residents. Our case rate has declined from a high of 303.6 new cases per 100,000 residents on January 1, 2022, and currently appears to be stable at the low risk level.

Average New COVID-19 Cases Per Day Per 100,000 Residents



Data as of 3/18/22

# Healthcare System Available Capacity

There are a total of 982 hospital beds within the county (including surge beds). Our current available capacity is around 50% while 48% of beds are in use for other issues and 2% are in use for patients with COVID-19.

## Available Hospital Capacity

