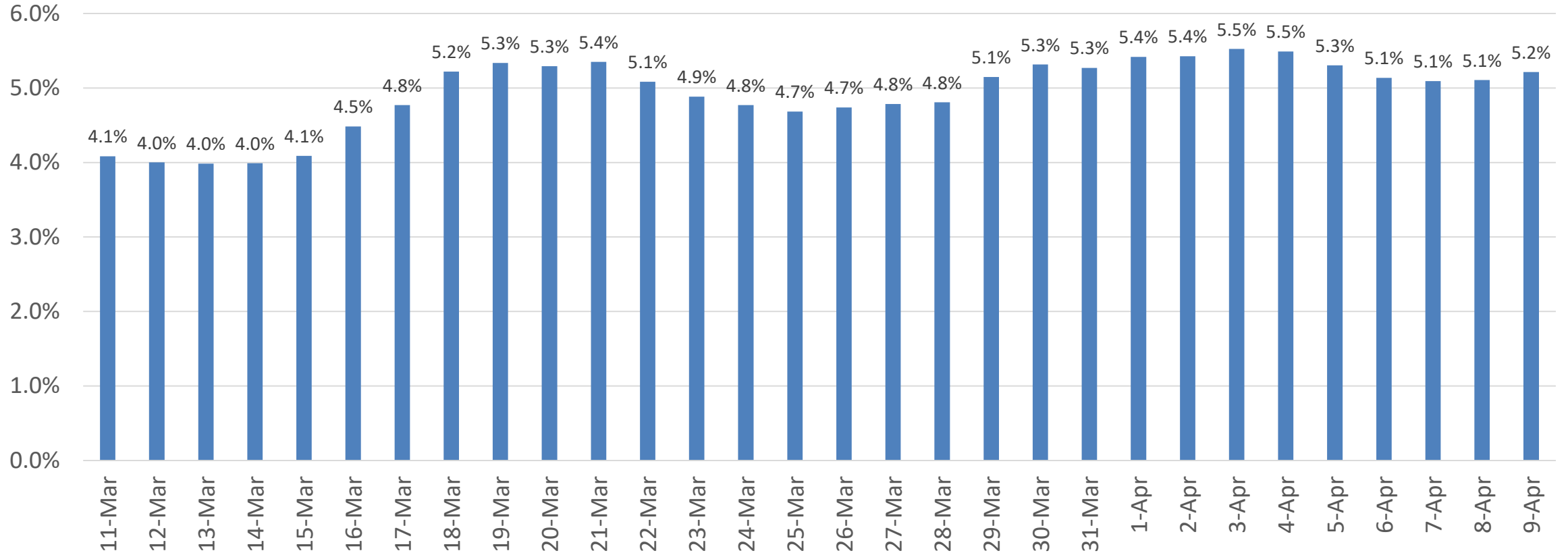


Percent of Positive COVID-19 Tests* (7-days average)

Prince George's County Percent Positive Tests

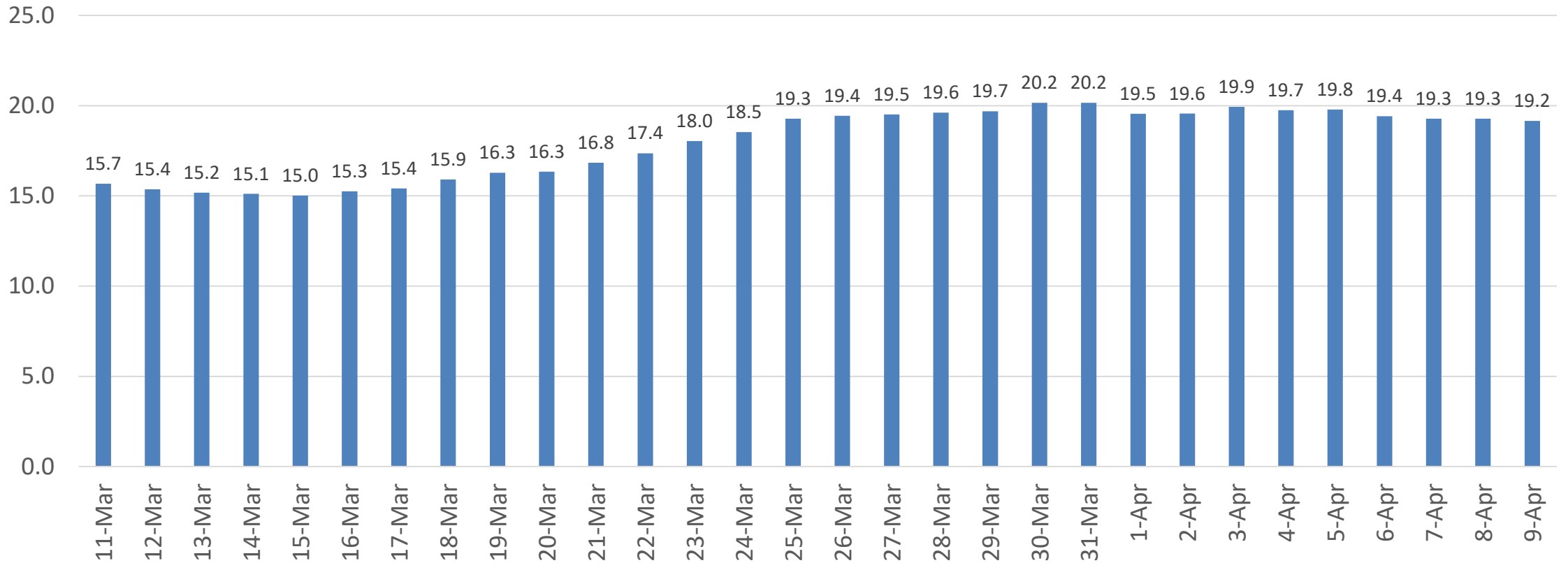


*Based on Lab Collection Date

Data as of 4/13/21

COVID-19 Average Daily Case Rate* (7-day average)

Prince George's County Average New Cases per 100,000 population



*Based on Lab Collection Date

Data as of 4/13/21