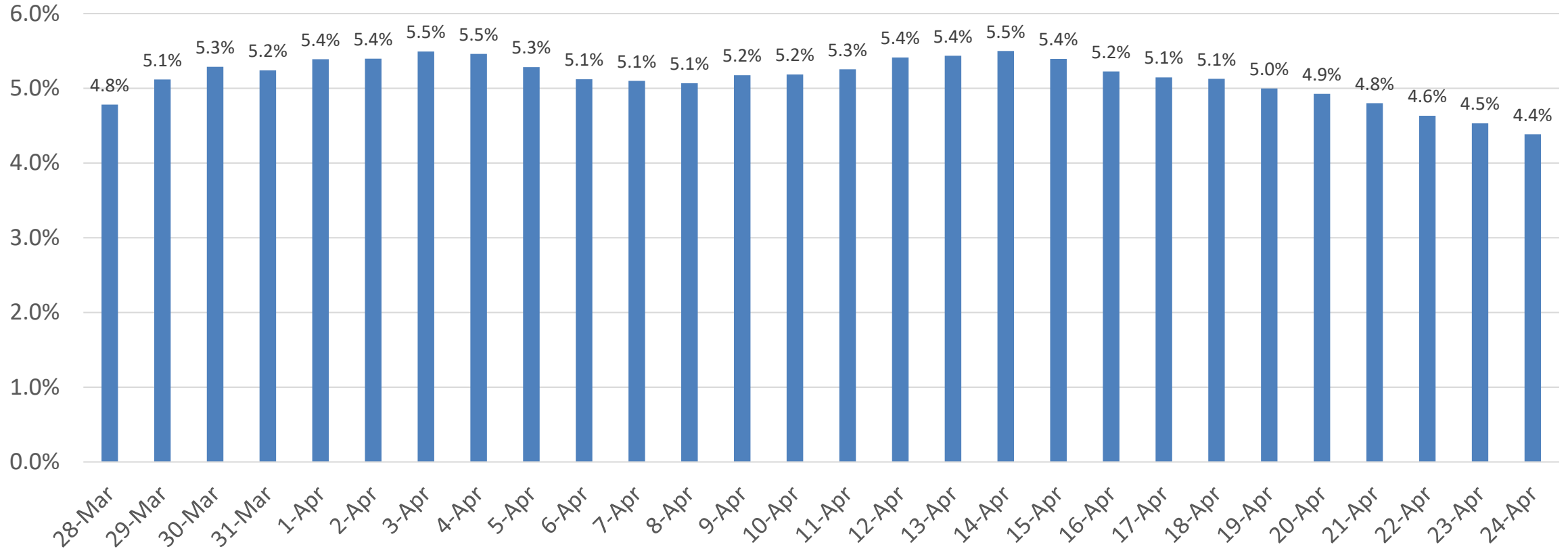


# Percent of Positive COVID-19 Tests\* (7-days average)

## Prince George's County Percent Positive Tests

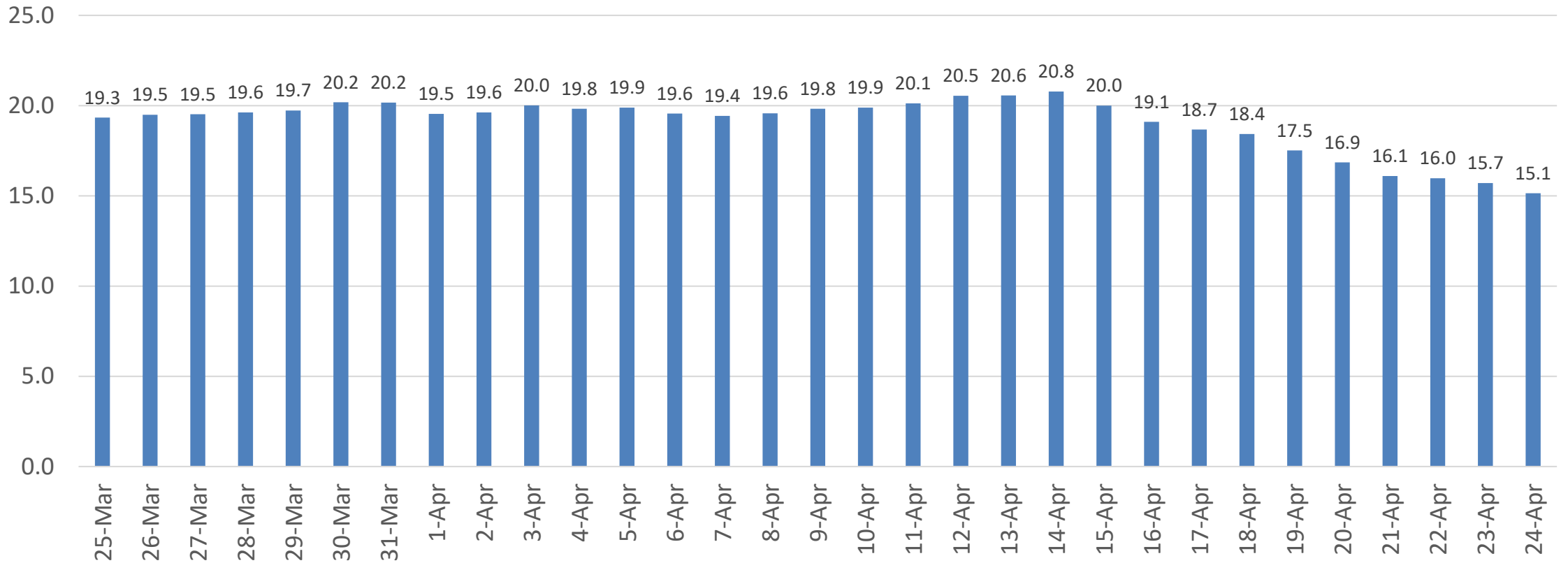


\*Based on Lab Collection Date

Data as of 4/28/21

# COVID-19 Average Daily Case Rate\* (7-day average)

Prince George's County  
Average New Cases per 100,000 population



\*Based on Lab Collection Date

Data as of 4/28/21