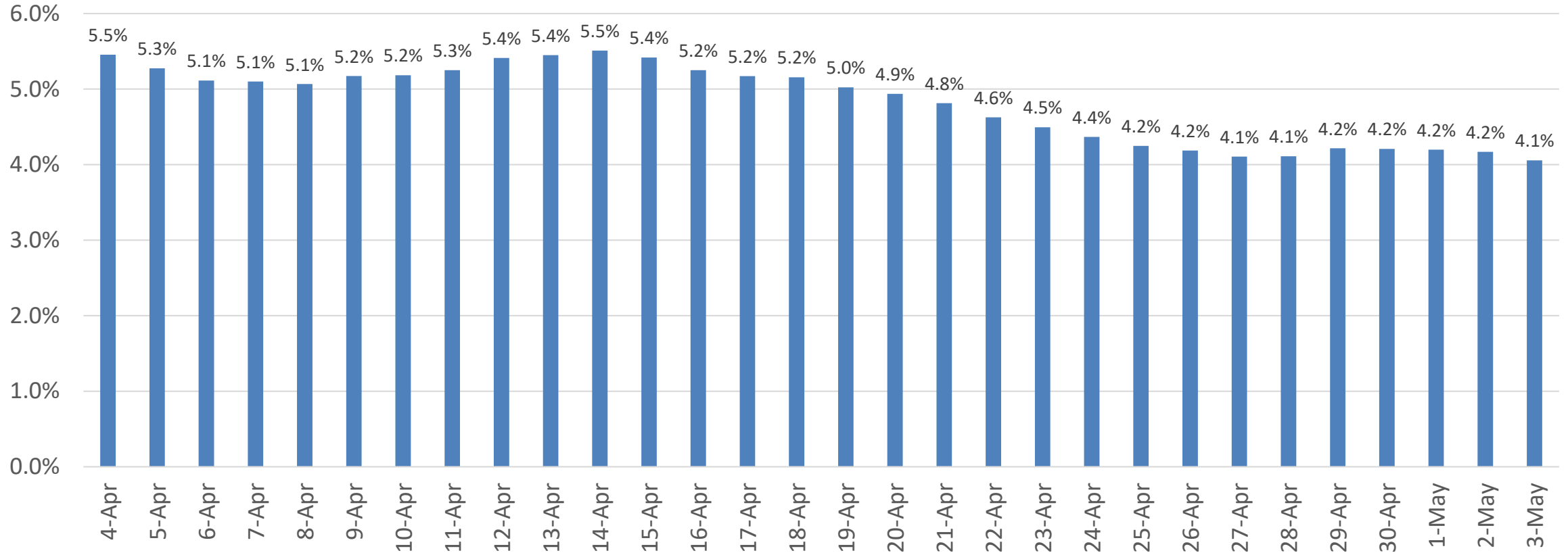


# Percent of Positive COVID-19 Tests\* (7-days average)

## Prince George's County Percent Positive Tests

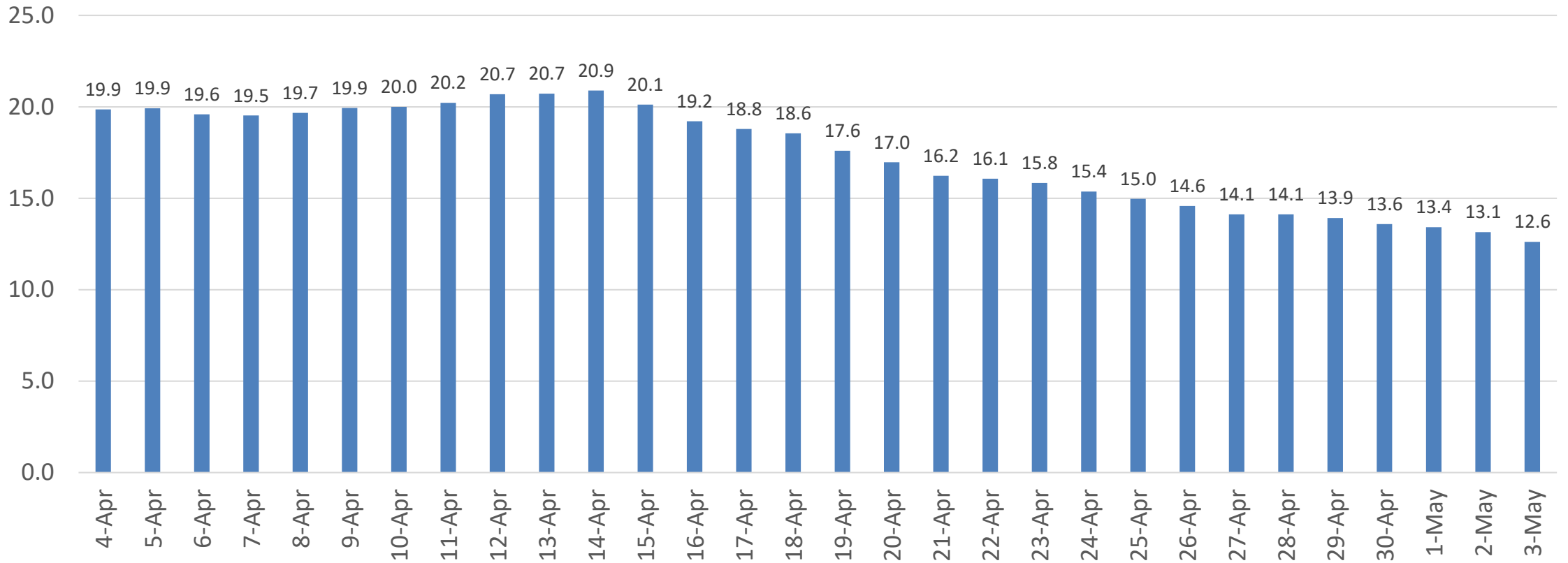


\*Based on Lab Collection Date

Data as of 5/7/21

# COVID-19 Average Daily Case Rate\* (7-day average)

## Prince George's County Average New Cases per 100,000 population



\*Based on Lab Collection Date  
Data as of 5/7/21