

# Prince George's COVID-19 Metrics

Risk Level	Percent of Positive Tests	Infection Rate	Average Daily Case Rate per 100,000 population	Available Hospital Capacity
Low	0-3%	<0.9	1-5	>49.9%
Medium	3.1%-5%	0.9-1.10	5-10	40-49.9%
High	5.1%-10%	1.10-1.39	10-25	30-39.9%
Critical (consider virtual learning)	>10	>1.39	>25	<30%
<b>11/29/21</b>	<b>3.8%*</b>	<b>1.13*</b> (as of 11/28)	<b>10.1*</b>	<b>43.7%</b> (on 12/22)

\*Updates are delayed due to system outage at the Maryland Department of Health

The [Maryland State Department of Education](#) recommends that if the number of laboratory confirmed cases of COVID-19 meets the definition of an outbreak, the response decisions, including possible individual classroom or school/child care program closure and recommendations for COVID-19 testing of staff and students/children will be made by the Local Health Department. Given this guidance and high county vaccination uptake, unless criteria for countywide closure is met, our focus will be on case and contact identification and management within individual schools.

Data as of 12/23/2021

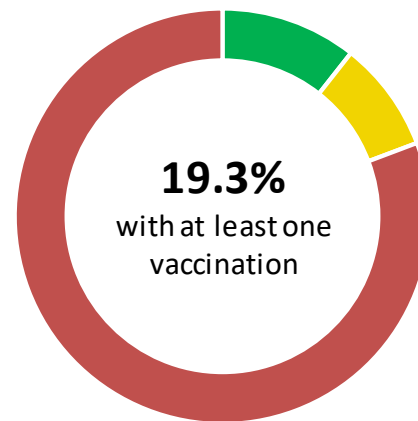


# COVID-19 Community Transmission and Vaccination

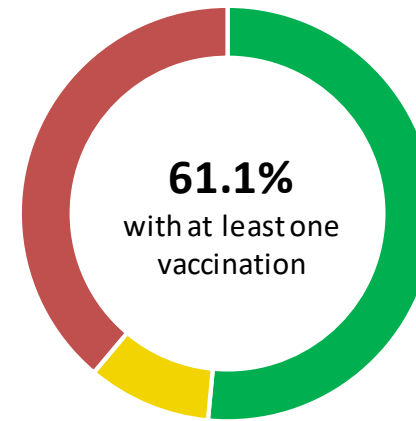
Per the [CDC updated guidance for COVID-19 Prevention in K-12 Schools](#), vaccination is considered the leading prevention strategy for those who are eligible, and **Prince George’s County exceeds the percentage of U.S. vaccinations for ages 12 and above**. The CDC also emphasizes using multiple prevention strategies together consistently, included universal indoor masking, as needed based on the level of community transmission and vaccine coverage.

	Prince George’s County 11/23-11/29*	CDC Transmission Level
New Cases per 100,000 persons in the past seven days (cumulative)	70.5	<b>Substantial (50.00-99.99)</b>
Percentage of positive tests in the past seven days	3.8%	<b>Low (&lt;5.00)</b>

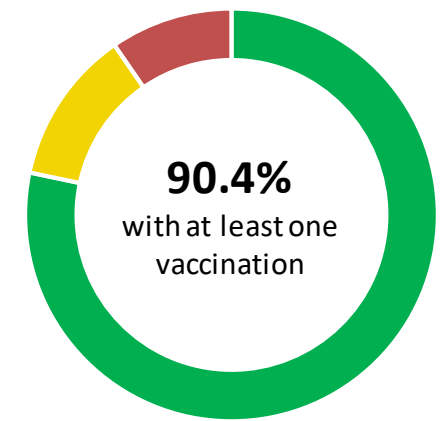
Resident Vaccination Status  
Ages 5-9 Years\*



Resident Vaccination Status  
Ages 10-19 Years\*



Resident Vaccination Status  
Population Ages 12+



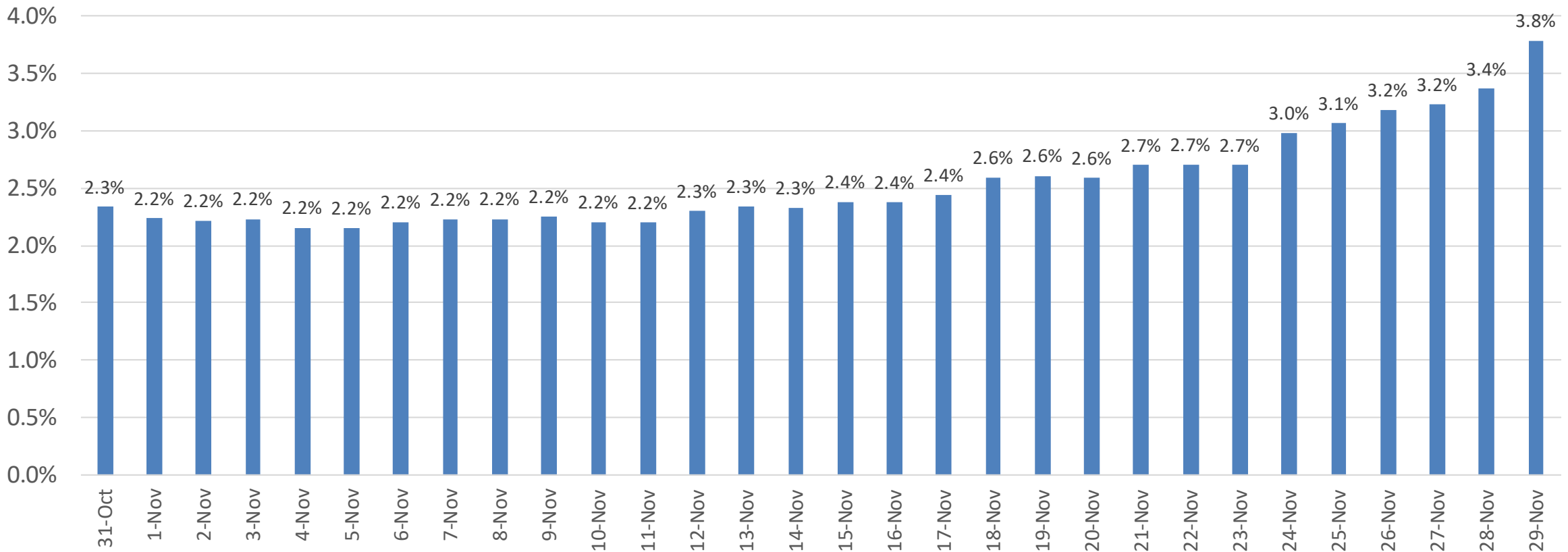
■ Completed ■ Partial ■ Unvaccinated

\*County-specific data as of 12/3/21 -updates are delayed due a system outage at the Maryland Department of Health; all other data accessed on 12/23/2021 at: <https://covid.cdc.gov/covid-data-tracker>

# Testing: Percent Positive (past 7 days by test date)

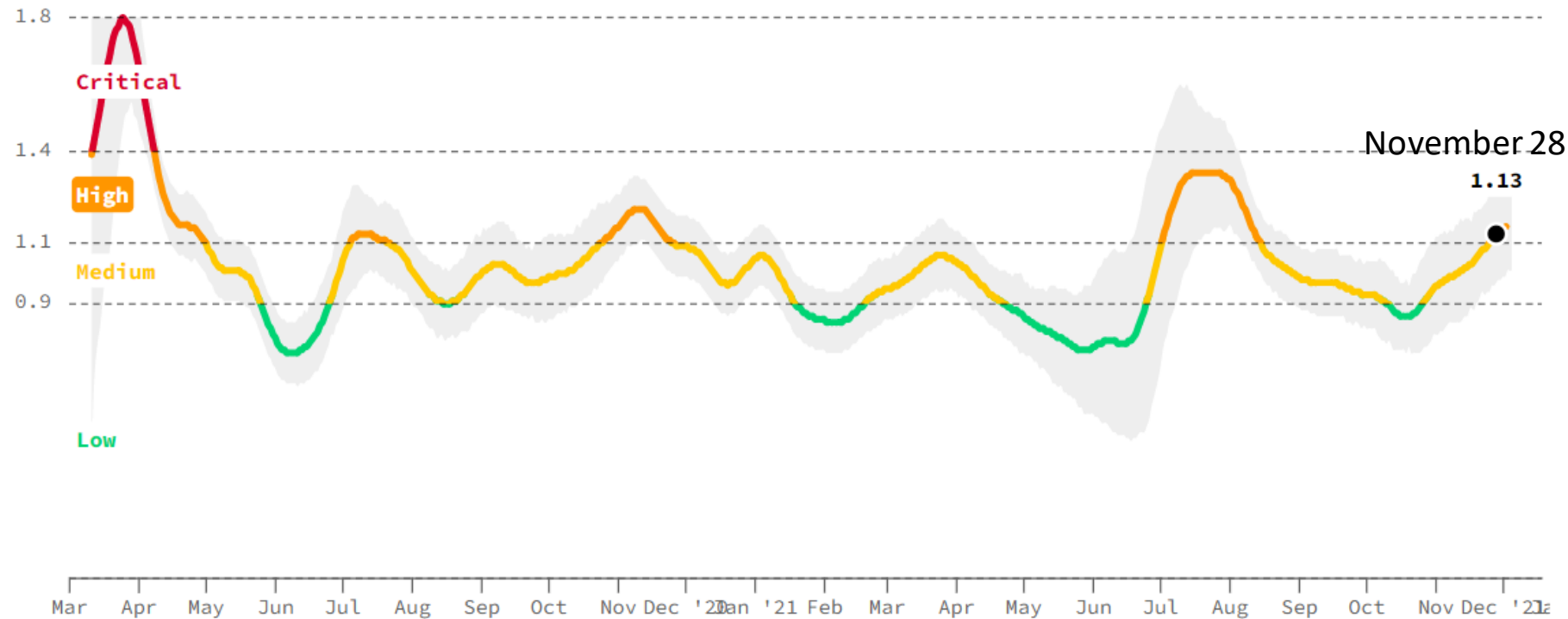
The percent of tests returning as positive for county residents was 3.8% towards the end of November. Updates are delayed due a system outage at the Maryland Department of Health.

Percent of Positive COVID-19 Tests by Date Collected (as of 12/3/2021)\*



Data as of 12/3/2021 updates are delayed due to a system outage at MDH

# Infection Rate for Prince George's County



**Infection Rate for:**  
Maryland: 1.18 (as of Nov 27)  
D.C.: 1.25 (as of Nov 30)

As of November 28, our infection rate was at 1.13 or “high risk” and was increasing. This is the first time we have been at high risk since mid-August.

NOTE: Updates are delayed due to the MD Department of Health System Outage

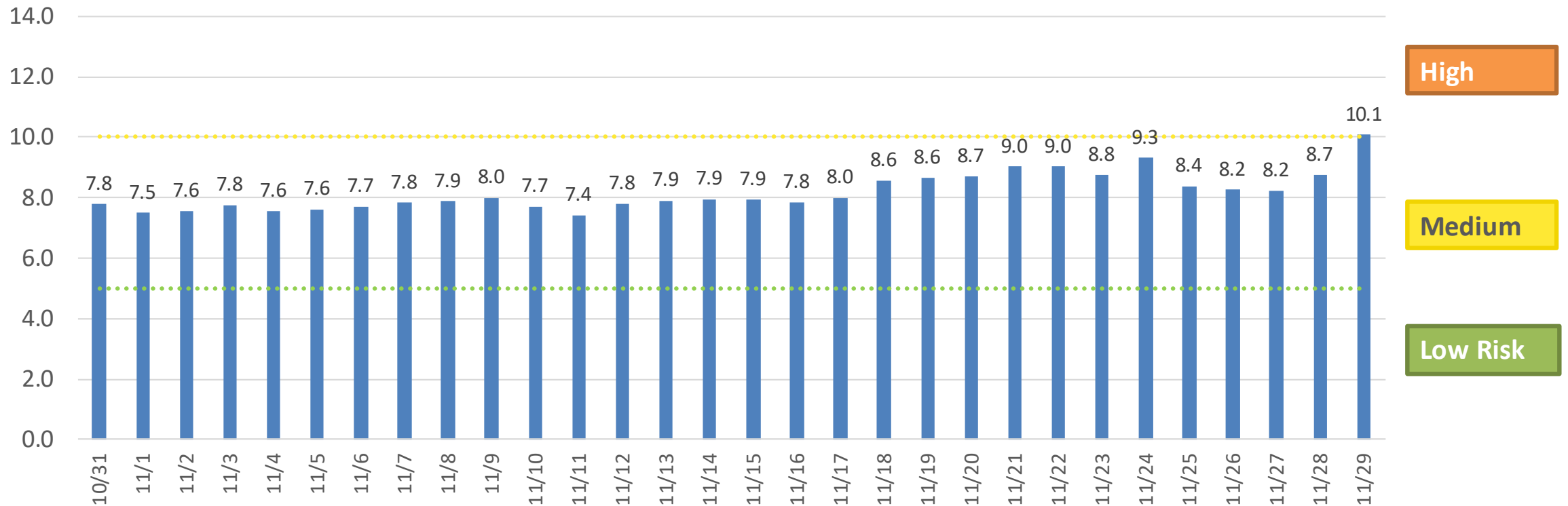
Estimated by CovidActNow.org

Accessed 12/6/21. Each data point is a 14-day weighted average. Presented as the most recent seven days of data as a dashed line, as data is often revised by states several days after reporting.

# Average Daily Case Rate (7-day Average by test date)

The daily case rate towards the end of November was **10.1 new cases per 100,000 resident**. With this increase we are back in high risk for the first time since mid-October. Updates are delayed due a system outage at the Maryland Department of Health.

Average New COVID-19 Cases Per Day Per 100,000 Residents



Data as of 12/3/2021 updates are delayed due to a system outage at MDH

# Healthcare System Available Capacity

There are a total of 982 hospital beds within the county (including surge beds). Our current available capacity is around 44% while 40% of beds are in use for other issues and 16% are in use for patients with COVID-19.

## Available Hospital Capacity (7-day average)

