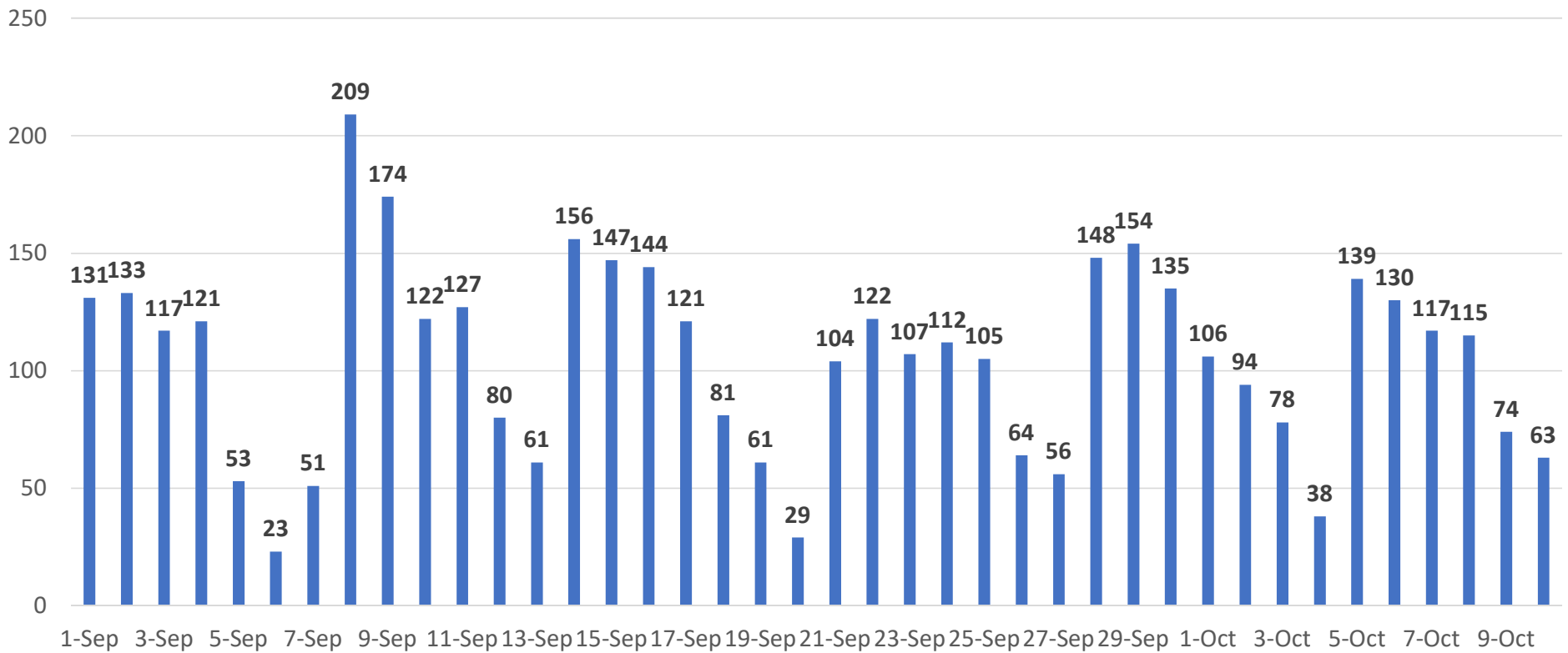


# COVID Cases\*, Prince George's County

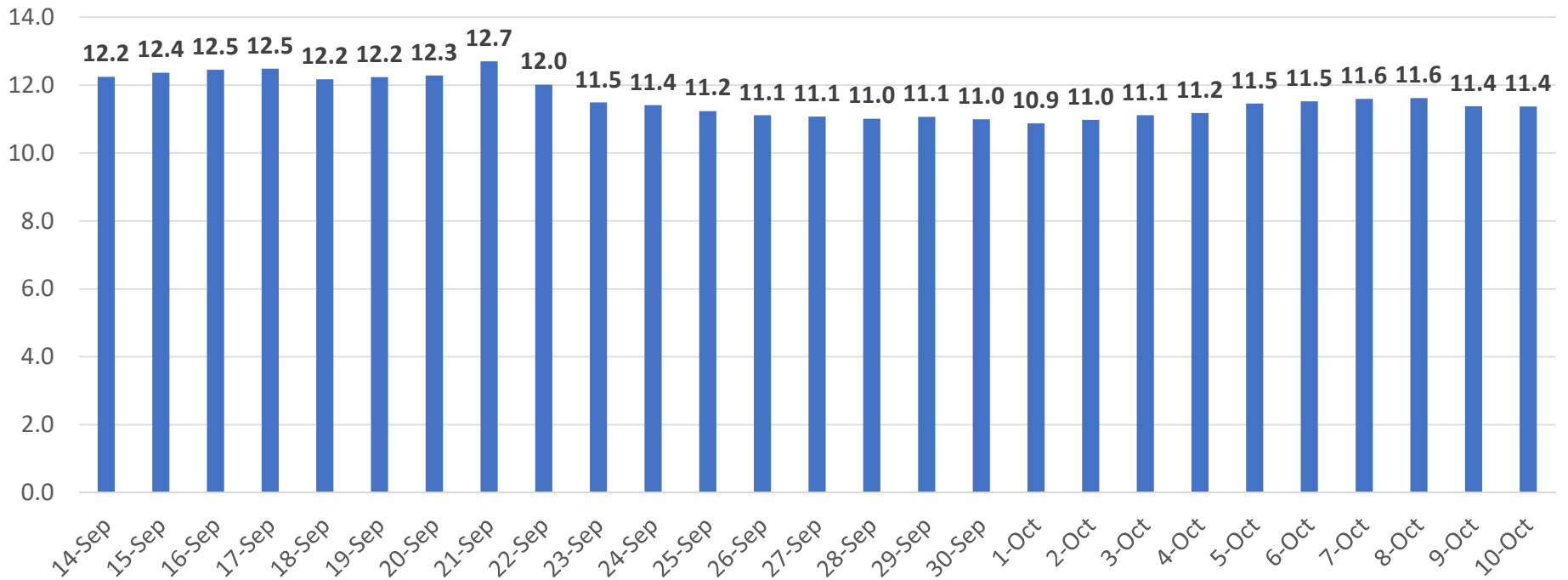


\*Based on Lab Collection Date

Data as of 10/14

# COVID Average Daily Case Rate\* (last 14 days)

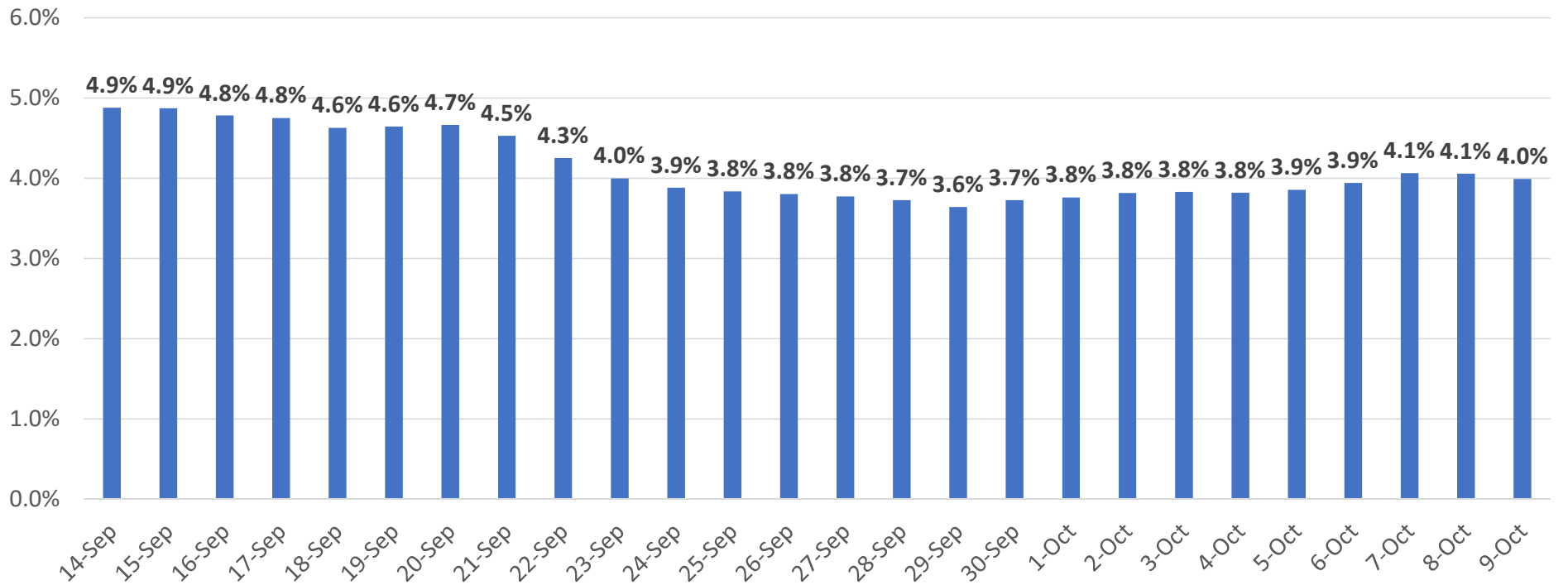
Prince George's County  
Average New Cases per 100,000 population



\*Based on Lab Collection Date  
Data as of 10/14

# Percent of Positive COVID Tests\* (last 14 days)

Prince George's County  
Percent Positive Tests



\*Based on Lab Collection Date  
Data as of 10/13