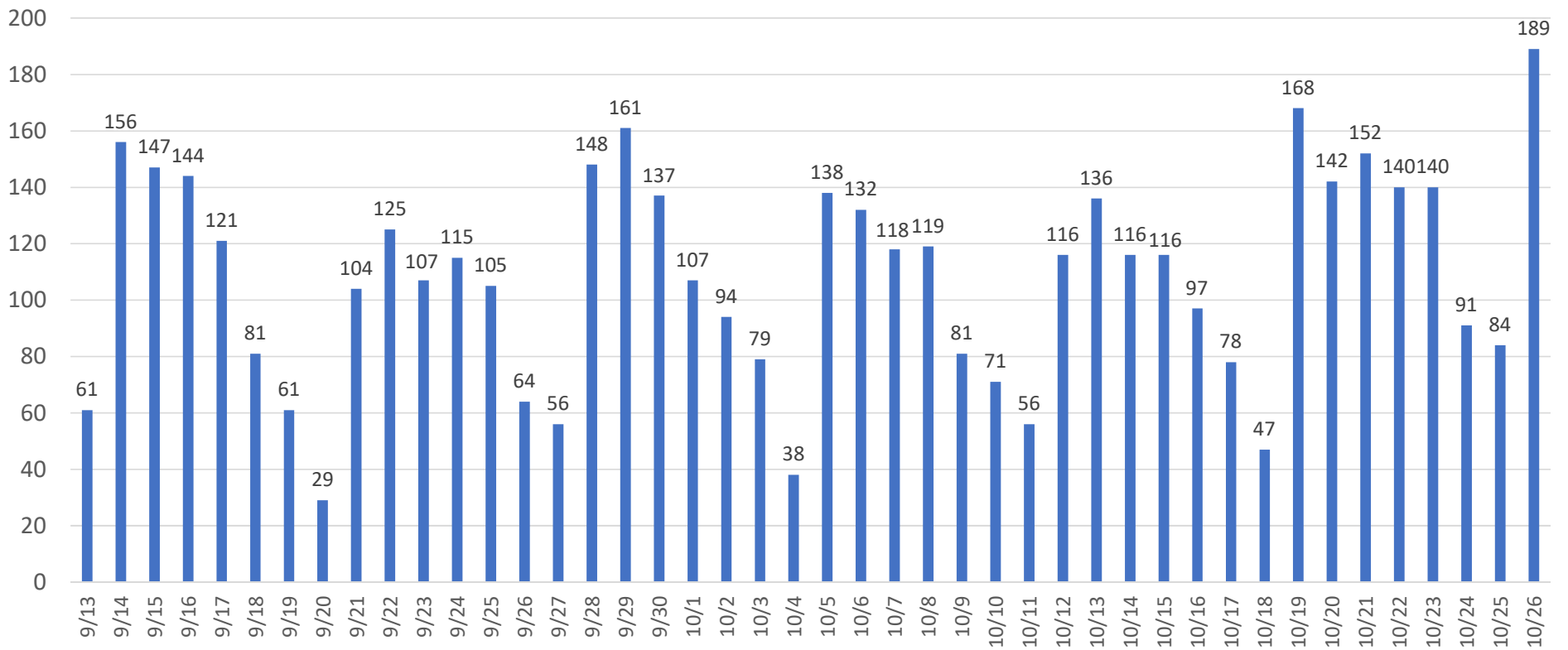


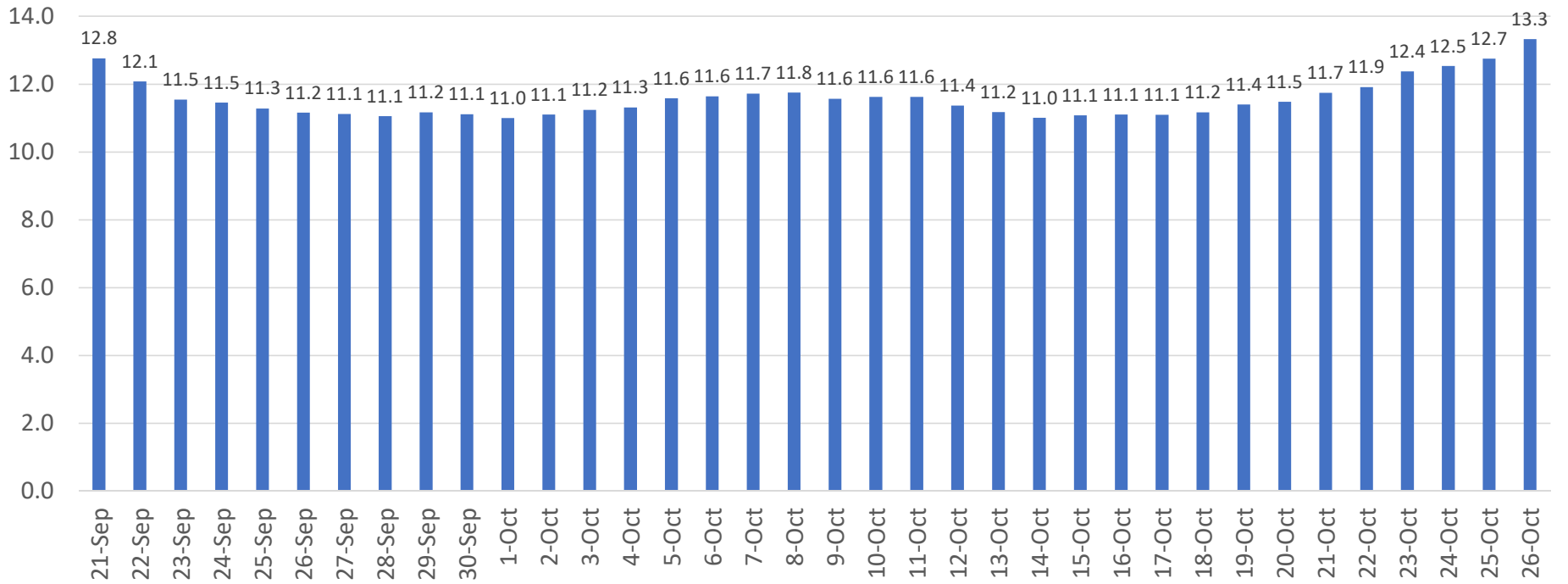
COVID Cases*, Prince George's County



*Based on Lab Collection Date
Data as of 10/30

COVID Average Daily Case Rate* (last 14 days)

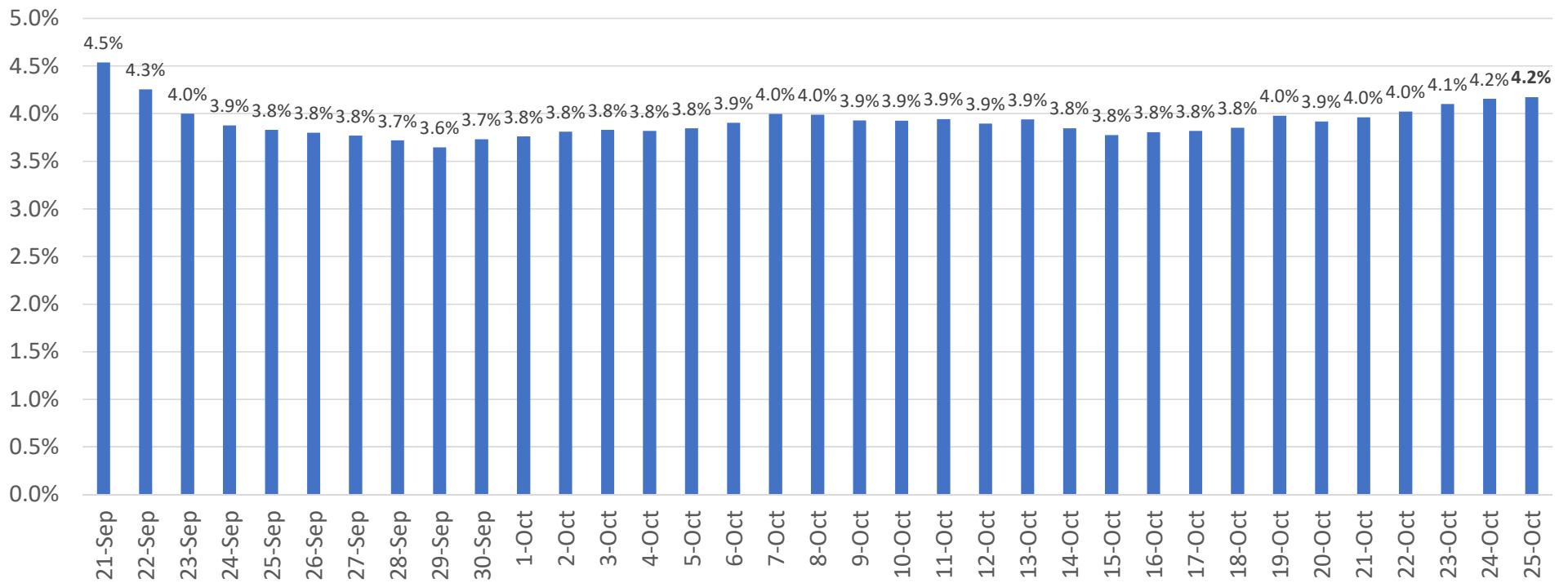
Prince George's County
Average New Cases per 100,000 population



*Based on Lab Collection Date
Data as of 10/30

Percent of Positive COVID Tests* (last 14 days)

Prince George's County Percent Positive Tests



*Based on Lab Collection Date
Data as of 10/29