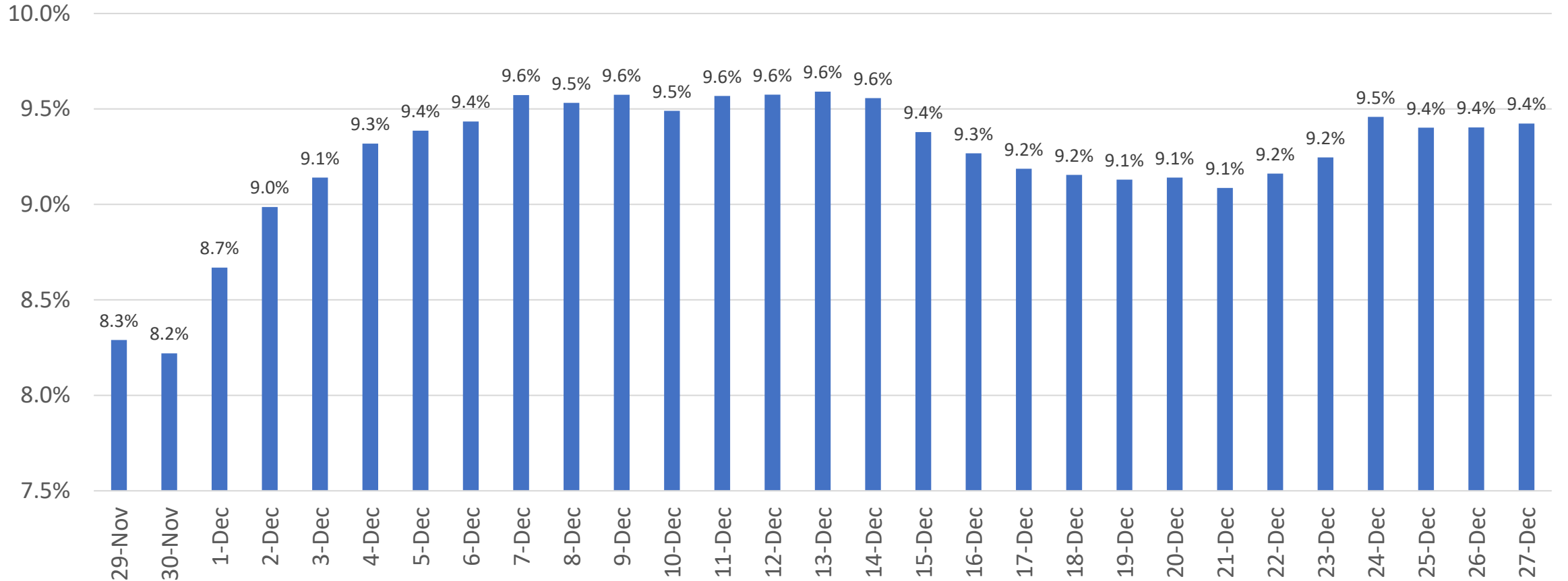


Percent of Positive COVID-19 Tests* (14-days average)

Prince George's County Percent Positive Tests

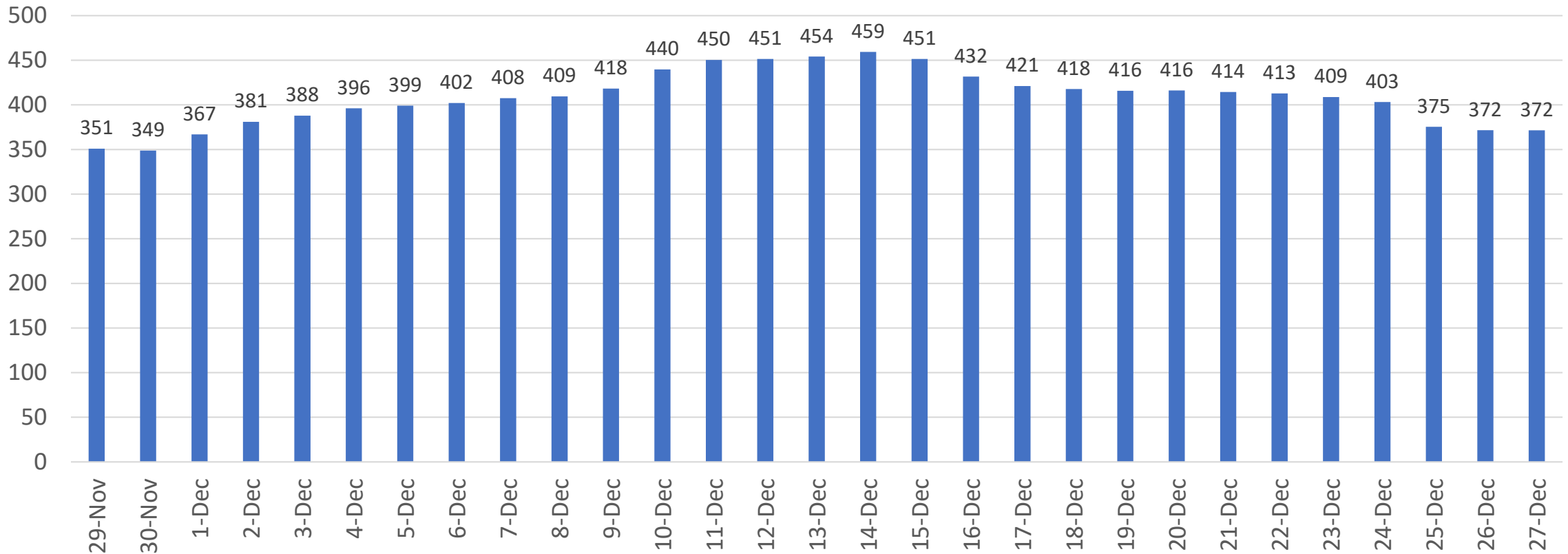


*Based on Lab Collection Date

Data as of 12/31

COVID-19 Cases* Prince George's County (14-day average)

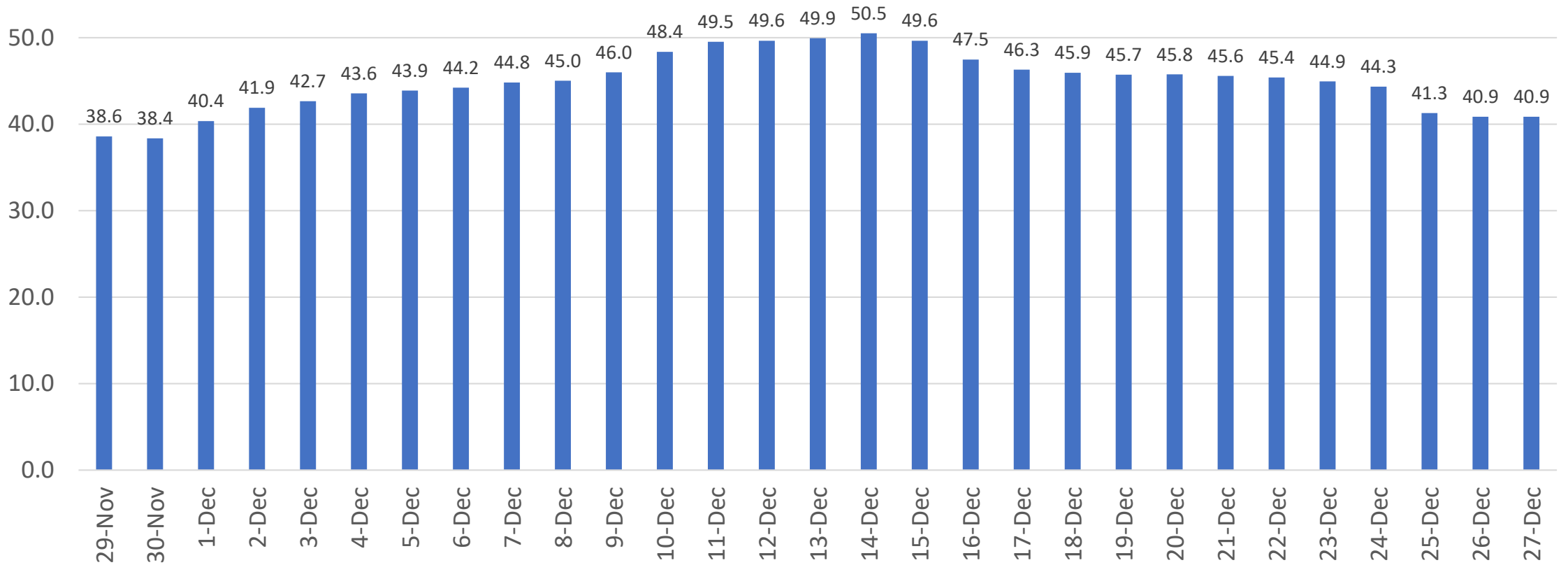
Prince George's County
Average New COVID-19 Cases per Day



*Based on Lab Collection Date
Data as of 12/31

COVID-19 Average Daily Case Rate* (14-day average)

Prince George's County
Average New Cases per 100,000 population



*Based on Lab Collection Date
Data as of 12/31