

2025 Quarter 4 Report Blueprint Schools Phase 2

December 2025



bit.ly/PGCPS-Blueprint



PGCPS BLUEPRINT SCHOOLS - PHASE 2

2025 QUARTER 4 REPORT

Table of Contents

Executive Summary | 3

Project Profiles | 4

Program Progress | 8

Construction Progress | 8

Construction Updates by Site | 8

Community Engagement | 11

Project Planning Committees | 11

Town Hall Meetings | 11

Upcoming Events | 12

Closing Statement | 12

EXECUTIVE SUMMARY

Prince George's County Public Schools (PGCPS) has organized schools into three delivery groups (A, B, and C), each with defined School Occupancy Readiness dates:

- Group A: Margaret Brent Elementary School, Templeton Elementary School (School Occupancy Readiness: July 2026)
- Group B: Robert Frost K-8, Hyattsville Elementary School, Fairwood Elementary School, Brandywine K-8 (School Occupancy Readiness: July 2027)
- Group C: Duckworth Elementary School, Springhill Lake Elementary School (School Occupancy Readiness: July 2028)

Progressive Education Partners, LLC (PEP) continues to advance construction on the Group A schools and Robert Frost K-8. All Group B schools are also now in active construction. The Independent Engineer has certified that both Group A schools have reached 50% completion, and the progress payment has been made for Margaret Brent Elementary School. PGCPS and PEP are completing the process to facilitate the payment of a progress payment for Templeton Elementary School. As part of this process, we are establishing the framework for non-compliance credits and adjustments.

For Group B, PEP has submitted the 95% construction drawings, which are currently under concurrent review by Kathy Dixon Architects (PGCPS' design consultant), the Interagency Commission on School Construction (IAC), and a contracted independent engineer. Reviewer comments have been received, and PEP's design team is incorporating revisions. Community meetings for all remaining schools have been completed, and mandatory referrals are finalised. We have begun the process of compliance reviews.

The Group C schools are approximately 65% through construction document development. Demographic changes and site conditions have required some redesigns. Since the start of the Exclusive Negotiating Agreement (ENA), PEP and PGCPS have coordinated closely with permitting authorities—including the Department of Permitting, Inspections, and Enforcement (DPIE), the Washington Suburban Sanitary Commission (WSSC), and the Maryland-National Capital Park and Planning Commission (M-NCPPC)—to streamline reviews and avoid costly delays.

Several design change orders were approved by the Steering Committee at the last meeting. We had discussed creating a fund to finance those change orders; however, after reviewing the project cash flows, we have determined that the financing is unnecessary at this time.

Overall, the program remains on schedule and continues to align with the objectives outlined in both the MOU and the Contract.

Shawn Matlock

Director, Office of Alternative Infrastructure Planning and Development

PROJECT PROFILES

Margaret Brent Elementary School



Project Status: Construction
Neighborhood: New Carrollton
Address: 5816 Lamont Terr., New Carrollton, MD 20784
Grade Configuration: PK-5
Capacity: TBD
Square Footage: TBD
Principal: TBD

Associate Superintendent:
 • Dr. Kasandra G. Lassiter
County Council District: 3
State Legislative District: 22
School Board District: 2

Templeton Elementary School



Project Status: Construction
Neighborhood: Riverdale Park
Address: 6001 Carters Ln., Riverdale Park, MD 20737
Grade Configuration: PK-5
Capacity: TBD
Square Footage: TBD
Principal: Amy Robinson

Associate Superintendent:
 • Dr. Kasandra G. Lassiter
County Council District: 3
State Legislative District: 47A
School Board District: 4

PROJECT PROFILES *(continued)*

Hyattsville Elementary School



Project Status: Construction

Neighborhoods: Hyattsville, West Riverdale, University Park

Address: 5311 43rd Ave., Hyattsville, MD 20781

Grade Configuration: PK-5

Capacity: TBD

Square Footage: TBD

Principal: Dr. Richard T. McKee, Jr.

Associate Superintendent:

- Dr. Kasandra G. Lassiter

County Council District: 2

State Legislative District: 22

School Board District: 3

Robert Frost Area K-8 School



Project Status: Construction

Neighborhood: New Carrollton

Address: 6419 85th Ave., New Carrollton, MD 20784

Grade Configuration: PK-8

Capacity: TBD

Square Footage: TBD

Principal: TBD

Associate Superintendents:

- Dr. Kasandra G. Lassiter
- Dr. Ameila Coleman

County Council District: 3

State Legislative District: 22

School Board District: 2

PROJECT PROFILES *(continued)*

Fairwood Elementary School



Project Status: Construction

Neighborhood: Bowie

Address: 13250 Fairwood Pkwy., Bowie, MD 20720

Grade Configuration: PK - 5

Capacity: TBD

Square Footage: TBD

Principal: TBD

Associate Superintendent:

- Dr. Kasandra G. Lassiter

County Council District: 6

State Legislative District: 24

School Board District: 5

Brandywine Area K-8 School



Project Status: Design

Neighborhood: Brandywine

Address: 8000 Dyson Rd., Brandywine, MD 20613

Grade Configuration: PK-8

Capacity: TBD

Square Footage: TBD

Principal: TBD

Associate Superintendents:

- Dr. Kasandra G. Lassiter
- Dr. Ameila Coleman

County Council District: 9

State Legislative District: 27B

School Board District: 9

PROJECT PROFILES *(continued)*

James E. Duckworth Elementary School



Project Status: Design

Neighborhoods: Beltsville, Calverton

Address: 11201 Evans Tr., Beltsville, MD 20705

Grade Configuration: PK - 5

Capacity: TBD

Square Footage: TBD

Principal: Dr. Selena Swilling

Associate Superintendent:

- Dr. Kasandra G. Lassiter

County Council District: 1

State Legislative District: 21

School Board District: 1

Springhill Lake Elementary School



Project Status: Design

Neighborhoods: Greenbelt, Hollywood

Address: 6060 Springhill Dr., Greenbelt, MD 20770

Grade Configuration: PK-5

Capacity: TBD

Square Footage: TBD

Principal: Trena Wilson

Associate Superintendent:

- Dr. Kasandra G. Lassiter

County Council District: 4

State Legislative District: 22

School Board District: 2

PROGRAM PROGRESS

Phase 2 Construction Progress

Construction activities are advancing at the first set of schools: Margaret Brent Elementary School, Templeton Elementary School, and Robert Frost K-8. Site grading, utilities, structural steel, exterior framing, MEP rough-in, and roofing are underway. Exterior framing, roofing, and MEP rough-in are progressing at Margaret Brent, while structural steel and elevated concrete deck work continue at Templeton. Robert Frost is set to receive its first delivery of structural steel, while site work and slab-on-grade activities are ongoing. Fairwood and Brandywine have begun site work and are moving toward geo-pier and concrete foundation construction. Utility work is also being scheduled for these Group B schools. The final construction drawing sets for Margaret Brent Elementary School, Templeton Elementary School, and Robert Frost K-8 have been delivered. Additionally, 95% of the design development and building permit packages for Brandywine K-8, Hyattsville Elementary School, and Fairwood Elementary School have been completed. Raze permits are imminent for Woodmore and Hyattsville. Permits for rough grading have been issued for Woodmore, while fine grading and foundation-to-grade sets are in place for Brandywine and Fairwood. The permit application and review processes are ongoing, with the design-build team working closely with permitting agencies to meet target dates for the next permit phase. The team is also coordinating the final Group B DPIE site preconstruction meeting to initiate E&S controls for Hyattsville and to secure the final Group B fine grading permit.

Construction Updates by Site

Margaret Brent Elementary School



Construction at Margaret Brent Elementary School continued to make steady progress this quarter, with several key activities reaching completion and others advancing toward major project milestones. Completed work included exterior framing, slab-on-metal-deck concrete, geothermal wells, underground mechanical, electrical, and plumbing (MEP) systems, structural steel installation, site grading, staircase installation, Washington Gas line installation, skylight framing, and the placement of the Dedicated Outdoor Air System (DOAS) unit. Current efforts include installing brick veneer, completing MEP and sprinkler rough-ins, applying exterior sheathing and air barrier systems, installing roof insulation and TPO, ongoing site grading and utility work, as well as interior framing, window, and door frame installation. Planned activities through March 2026 involve curtainwalls and storefronts, interior drywall finishing, drywall and acoustic ceiling tile

(ACT) installation, flooring, MEP fixture installation, painting, construction of the exterior shed, and installation of roof ladders.

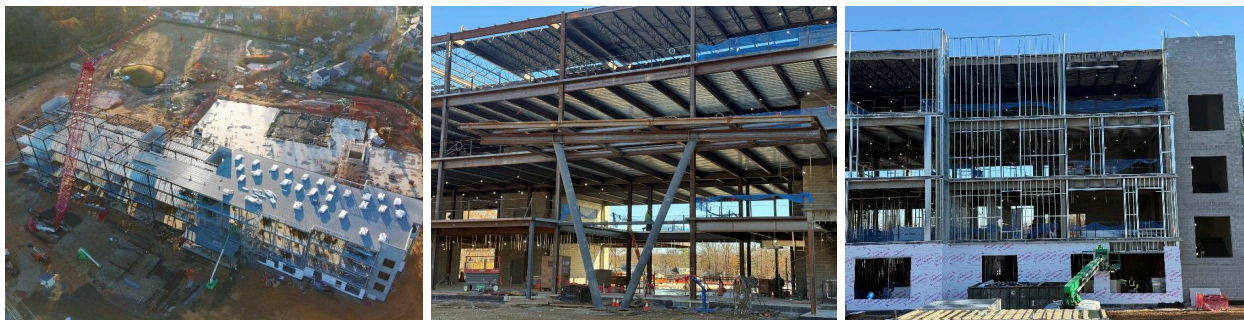
Templeton Elementary School



At the Templeton Elementary School site, construction continued to progress this quarter with major foundational and site infrastructure activities reaching completion. Finished work comprised of demolition of the existing building, concrete foundations, foundation waterproofing, sanitary and water main installations, and water meter vault installation. Additional work completed includes on-site and off-site stormwater structures, site grading, structural steel, concrete slabs on metal deck, underground mechanical, electrical, and plumbing (MEP) rough-ins, concrete masonry unit (CMU) walls, geothermal well boring, and relocation of the 24-inch WSSC water line.

Currently, construction teams are working on exterior and interior framing, overhead MEP rough-ins, roofing, and installation of exterior sheathing and air barrier systems. Installation of brick veneer, aluminum storefront systems, geothermal horizontal connections, retaining walls, Washington Gas service, and Pepco primary service are also in progress. Upcoming work through March 2026 will include construction of bio ponds, site concrete placement, installation of metal panels, site electrical lighting, and wall and ceiling close-in as the building moves further toward enclosure.

Robert Frost K-8 School

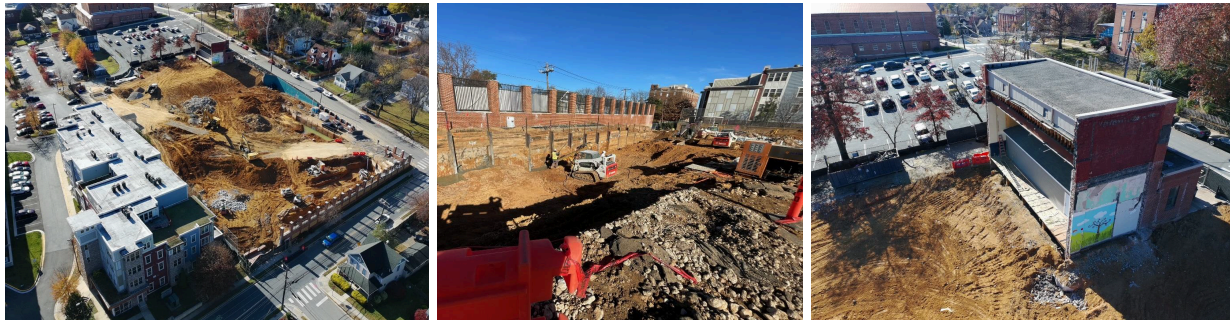


Construction has made significant progress at the Robert Frost K-8 site. This past quarter, the construction team completed asbestos abatement, interior demolition, and full raze of the existing building. Rough and final grading, building foundations, Phase 2A and 2B storm drain installation, below-grade masonry, and the relocation of storm and sewer lines, managed by WSSC, were also

completed. Finally, geothermal well drilling with associated circuits and vaults, construction of concrete masonry unit (CMU) shafts in Areas A and B, below-grade waterproofing, underground mechanical, electrical, and plumbing (MEP) installations across Areas A, B, and parts of C and D, and slab-on-grade placement in those same areas were all completed as well.

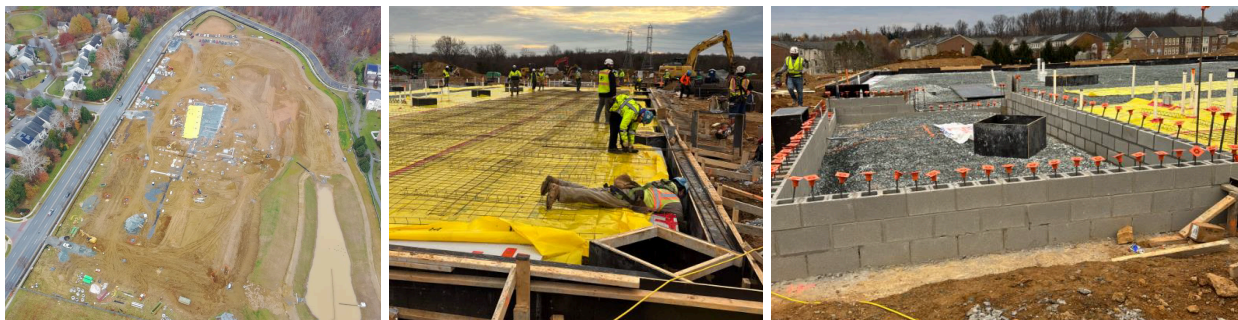
Current construction efforts are focused on the installation of the 85th Avenue water line, Phase 3A site utilities, underground MEP systems in the kitchen, structural steel installation across all areas, slab-on-metal deck placement, MEP rough-ins, interior and exterior framing, and sheathing. Looking ahead, upcoming activities through March 2026 are set to further transition the project into enclosure and site development, with planned work including slab-on-grade in the kitchen, roofing, air barrier installation, parking lot sitework, site concrete, brick veneer, and the installation of windows and storefront systems.

Hyattsville Elementary School



Activities have also moved forward at Hyattsville Elementary School. Construction teams completed the razing of the building, erosion and sediment controls, and site demolition. Current work in progress includes site grading and sheeting/shoring. Upcoming activities will focus on installing site utilities, MEP rough-ins, and geo-piers. Additional work will consist of laying concrete footings and erecting structural steel.

Fairwood Elementary School



Construction activities at Fairwood Elementary School progressed steadily this quarter. Site grading and underground MEP rough-ins in Area A were completed, marking a key milestone for early foundational work. Ongoing efforts include constructing the CMU stair towers, continuing MEP rough-ins in Area B, installing stormwater and sanitary utilities, and pouring the concrete building

foundations. Looking ahead, planned activities through March 2026 include placing concrete footings and the slab on metal deck, erecting structural steel, installing cold-formed metal framing (CFMF), and completing remaining MEP rough-ins.

Brandywine K-8 School



Finally, at Brandywine K-8 School, construction has continued to progress. Site and building pad grading was completed this quarter, along with the installation of aggregate geopiers. Construction activities currently in progress include the building foundation work, below-grade CMU masonry, underground MEP installations, slab-on-grade preparation, foundation waterproofing, and erection of structural steel. Wet site utility work is also underway, supporting continued progress on core building systems and site infrastructure. Upcoming activities will include the erection of structural steel, the installation of cold-formed metal framing (CFMF), and the installation of MEP rough-ins. Work on geothermal wells, sheathing, and metal decks is also anticipated.

COMMUNITY ENGAGEMENT

Project Planning Committees

The Community Outreach and Engagement team has facilitated nine Project Planning Committee (PPC) meetings so far with each school. The committee members were selected by the principals and mainly consist of school administrators, staff, students, PTA representatives, community leaders, and elected officials. These PPCs serve as the primary forum for two-way communication between the PEP team and the school community. PPC meetings continue to play a crucial role in maintaining program transparency and ensuring that the perspectives of school communities directly inform project execution. Through regular check-ins, these meetings help keep each project on track regarding its timeline, objectives, and deliverables. As the program advances, the upcoming round of PPC sessions will continue to foster collaboration and keep stakeholders well-informed as we excitedly plan for our final two schools to enter the PPC bi-monthly meeting sequence.

Town Hall Meetings

In quarter 4, the Progressive Education Partners (PEP) Community Engagement Team held its quarterly project town hall meeting, continuing efforts to ensure that every community and stakeholder stays informed and has a say in the development of their new school. These sessions

serve as a vital platform for providing progress updates on the design and construction of each school. A total of fifteen town hall meetings have been held this year.

Town Hall meetings for Springhill Lake Elementary and Duckworth Elementary took place on October 30 and November 5, respectively. Each meeting featured a welcome from Director Shawn Matlock and opening remarks from the Honorable Joseline A. Peña-Melnyk, Esq., Maryland State Delegate, District 21; the Honorable Johnathan Briggs, Vice Chair of the Prince George's County Board of Education; and the Honorable Tiffini Andorful, Board of Education Member, District 1. These sessions gave residents the opportunity to connect directly with program leadership, design engineers, and contractors, fostering open dialogue, questions, and feedback.

Upcoming Events

As the program continues to advance, the next series of groundbreaking ceremonies and community engagement events in 2026 will build on the momentum established so far in Phase 2. These milestones will offer additional opportunities to celebrate progress and reaffirm the collective commitment to delivering high-quality, equitable education across Prince George's County. The program's forward-focused approach ensures that every new school is a step toward a brighter future for the county's students and families, and that the strong foundation of community partnership will continue to drive its success.

CLOSING STATEMENT

Phase 2 of the Blueprint Schools Program continues to progress on schedule, with visible advancements across design, permitting, and construction. Engagement with school communities and elected officials remains active, ensuring transparency and alignment at every stage. While some challenges, like design changes and change orders, are being managed, the program remains on track to meet its goals. Overall, these efforts show steady movement toward providing modern, high-quality learning environments for students and families across Prince George's County.