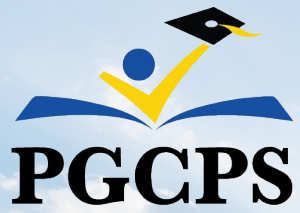


# DORA KENNEDY FRENCH IMMERSION

---

Relocation Town Hall  
June 11, 2025



# AGENDA

# Agenda

- 01.** Team Introductions
- 02.** Background
- 03.** Relocation Overview
- 04.** Engagement Map
- 05.** School Introductions
- 06.** Updates
- 07.** Q&A

# INTRODUCTIONS



# Introductions

**Dr. Charoscar Coleman**

**PGCPS**

Chief Operating Officer

**Dr. Sheila Jackson**

**PGCPS**

Director of Family and School Partnerships

**Jason Washington**

**PGCPS**

Associate Superintendent of Supporting Services

**Dr. Amelia Coleman**

**PGCPS**

Associate Superintendent

**Keba Baldwin**

**PGCPS**

Director of Transportation

**Dr. K. Fossett**

**PGCPS**

Instructional Director for Middle Schools - 8

**Desann Manzano-Lee**

**PGCPS**

Director of Specialty Programs & The Arts

**Deatrice Womack**

**Robert Goddard Montessori**

Principal

**James A. Spence II**

**Dora Kennedy French Immersion**

Principal

**Shayla Jackson**

**Department of Capital Programs**

Director

**Will Smith**

**Department of Capital Programs**

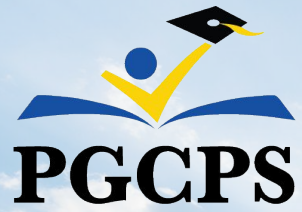
Project Management Supervisor

**Joseph Howell**

**Department of Capital Programs**

Project Manager



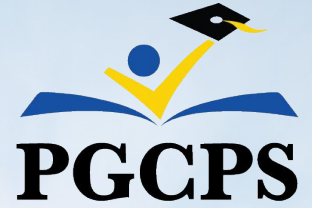


# BACKGROUND

# BACKGROUND

- A past feasibility study determined that the current Dora Kennedy French Immersion facility is no longer suitable for long-term use due to its aging infrastructure.
- The decision to co-locate ensures that the Dora Kennedy community will benefit from a safe, high-quality learning environment.
- Capital funding for the next six years has been allocated to other high-priority projects across the district, based on factors such as school size, facility condition, and overall need.
- The existing Dora Kennedy building will serve as swing space for Springhill Lake Elementary School for the next two years.
- After that period, non-historic portions of the facility will be decommissioned or transferred to the City of Greenbelt.

# RELOCATION OVERVIEW





# ONE BUILDING, TWO INDEPENDENT SCHOOLS



Dora Kennedy French Immersion will **permanently** relocate to the campus of **Robert Goddard Montessori School** at **9850 Good Luck Road, Seabrook, MD 20706**. This is a co-location, **not a merger**, both schools will maintain their own leadership, staff, programs, and school identities while sharing the same building.

## BEFORE CARE & AFTER CARE PROGRAMMING:

According to MSDE, the Accreditation and Licensing Office is able to have two VMCCP at the site.

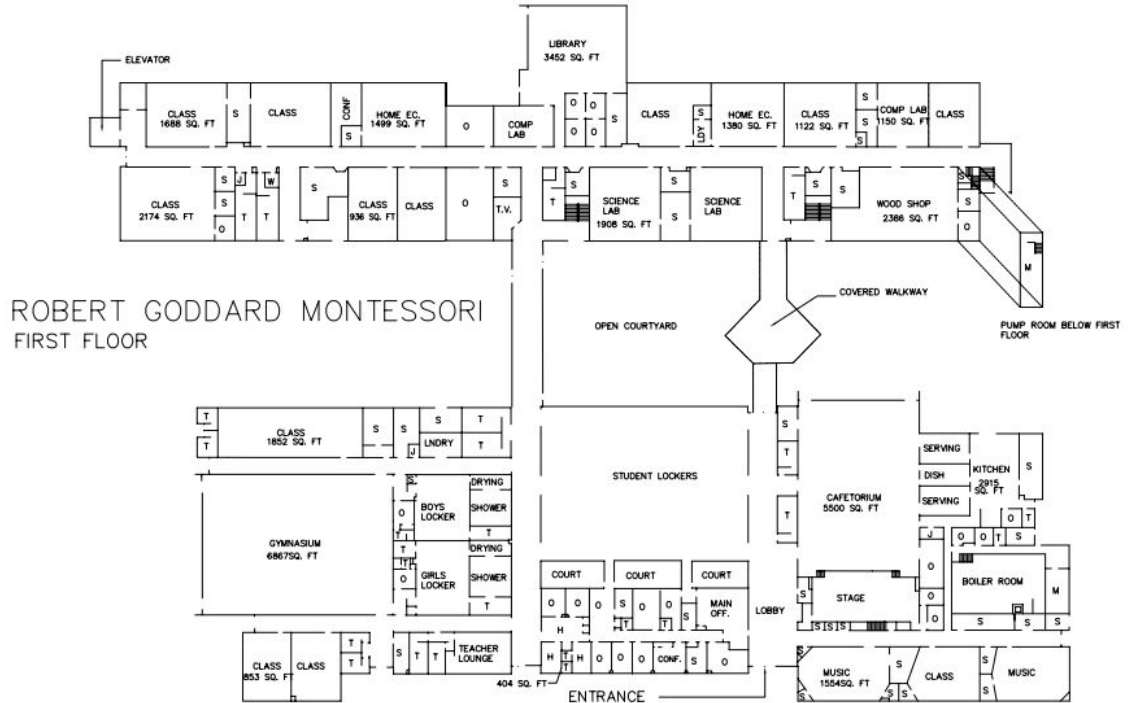
# ROBERT GODDARD SCHOOL

## Current Campus Overview

- **Total Building Size:** 133,631 sq. ft.
- **Student Capacity:** 998
- **Total Classrooms:** 48

## Safety and Security:

- 2 Security Assistants on-site
- Surveillance camera system in place
  - 2 exterior and 30 interior cameras



# ROBERT GODDARD SCHOOL

## Shared Spaces & Outdoor Features:

- Playground
- Two softball fields (one doubles as a soccer field)
- Gymnasium

## Parking Availability:

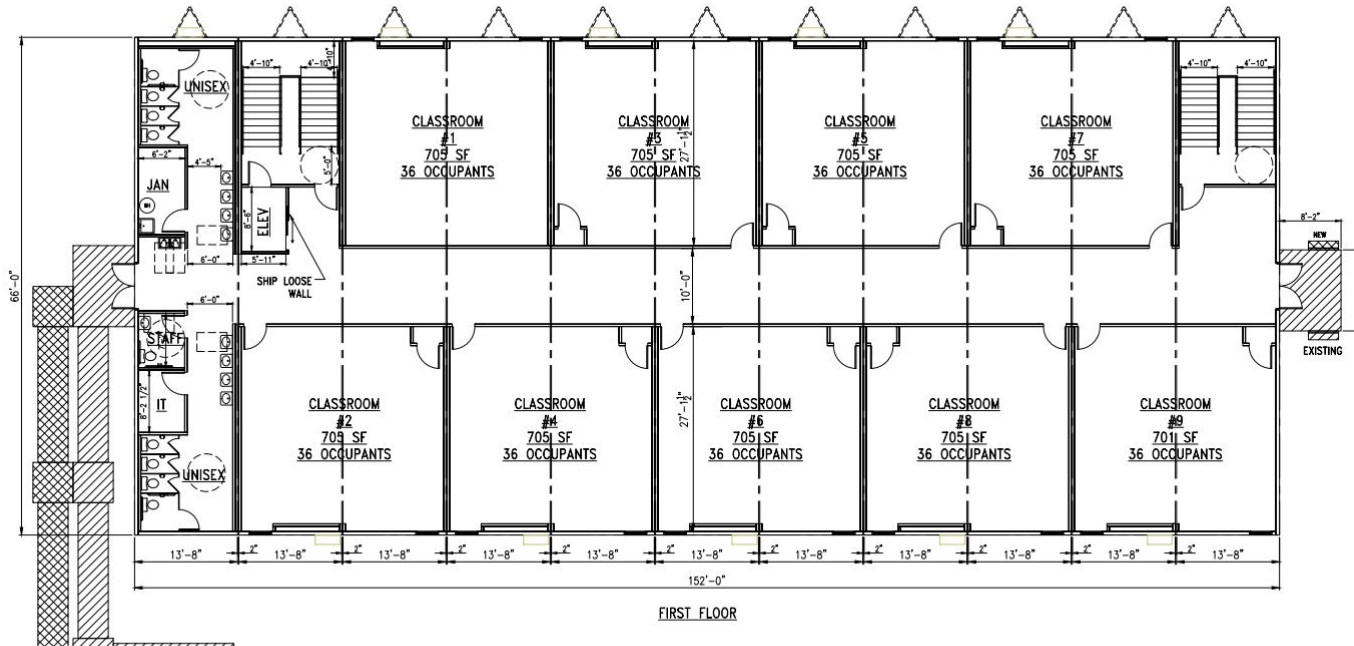
- 180 total spaces, including 6 accessible and 8 reserved spots



# ROBERT GODDARD SCHOOL

## Modular Classroom Expansion:

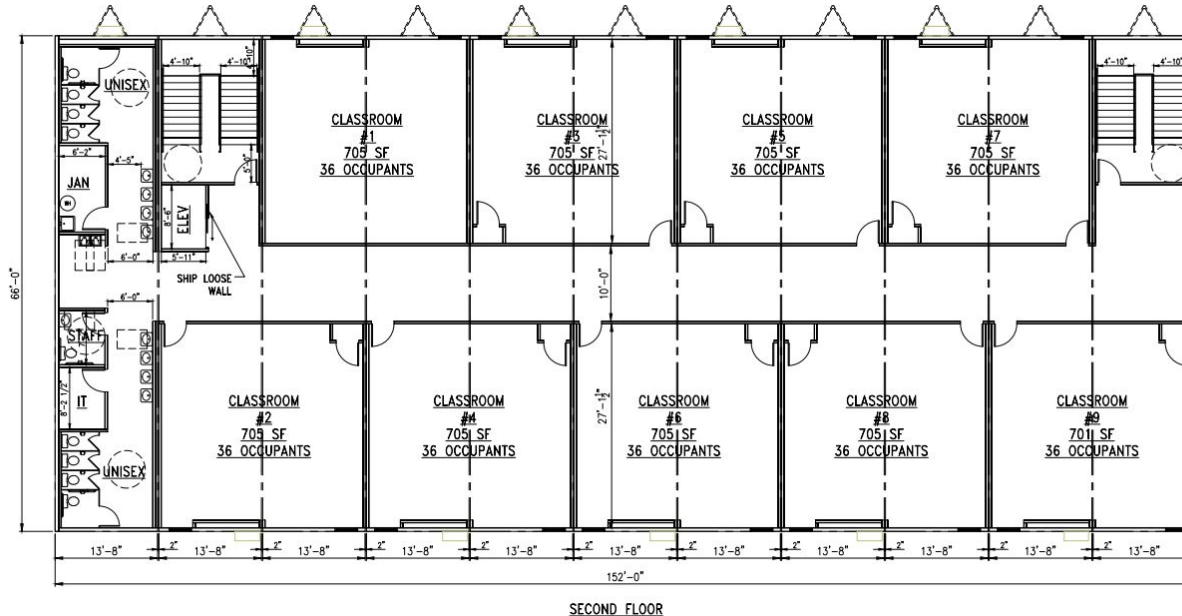
- **Existing:** One story 10-classroom modular
- **Replacement:** New two-story, modular expansion with elevator access



# ROBERT GODDARD SCHOOL

## Benefits of the Modular Classroom Expansion

- **Additional Classrooms:** 18 new classrooms will be added, bringing the total to 66.
- **Increased School Capacity:** The expansion will allow the building to welcome 450 additional students, increasing total capacity to 1,448.





# ROBERT GODDARD SCHOOL

## Building Improvements

In summer 2020, Robert Goddard Montessori School underwent major renovations aimed at improving air quality, overall building environment, and security.

The upgrades included:

- Full replacement of the HVAC system
- New exterior windows, doors, and storefronts
- Upgraded storefront hardware, including panic devices, locks, closers, pulls, door sweeps, and thresholds
- Replacement of all ceiling systems
- Installation of energy-efficient LED lighting throughout the building
- Installation of a new sprinkler fire protection system

# TENTATIVE RELOCATION TIMELINE

## **April–May 2026:**

- Planning period begins.
- Schools will coordinate packing, logistics, and internal preparations.

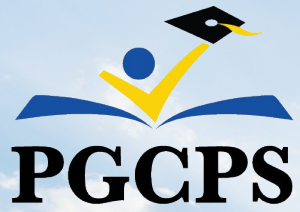
## **March 2026:**

- Move management vendor will be engaged.

## **July 15, 2026:**

- Target date for Dora Kennedy French Immersion (DKFI) to be fully moved into the Robert Goddard campus.

**The timeline allows staff to prepare before the school year begins, with the move proceeding as scheduled even if modular work is still wrapping up, and materials temporarily staged in spaces like the gym to support the transition.**



# ENGAGEMENT ROADMAP

# UPCOMING COMMUNICATIONS

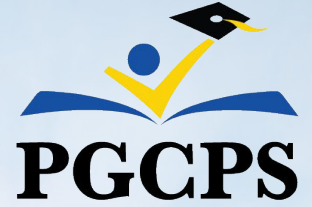
## TOWN HALLS

- **October 2025:** Detailed overview of co-location logistics, including building usage, classroom assignments, shared space scheduling, and finalized transportation plans.
- **April 2026:** Final preparation for move-in, covering packing procedures, move management timelines, staff readiness, and student transition support.

## NEWSLETTERS

- The Department of Capital Programs will release the next issue of its bi-monthly newsletter on July 15. This edition will feature an update on the relocation and its significance for the school community.

# SCHOOL INTRODUCTIONS





# ROBERT GODDARD MONTESSORI



**Principal:** Deatrice Womack

**Grade Configuration:** PreK to 8

**Number of students:** 473

**School Identity and Culture:** Self-directed learning and freedom with responsibility.

## *What is Montessori Education?*

*“To aid life, leaving it free, however, to unfold itself, that is the basic task of the educator.” - Dr. Montessori*

The guiding concepts of Montessori schools include the following:

- Children learn best in a nurturing, thoughtfully prepared environment that encourages spontaneous and cooperative exploration.
- Students are naturally curious and driven to learn, constructing their understanding through hands-on activities and meaningful interactions.
- Each child should be respected as a whole, unique, and inherently valuable individual.



# ROBERT GODDARD MONTESSORI



Physical, emotional, social, spiritual, aesthetic, and cognitive needs are inseparable. The Montessori curriculum provides an orderly framework that frees children to progress according to their individual capabilities.

- Montessori schools aim to assist children in developing habits of concentration, initiative, persistence, and joy in learning.
- Montessori schools nurture security, self-confidence, and independence in children, empowering them to grow into individuals who show respect and care for themselves, others, the environment, and all living things.



# DORA KENNEDY FRENCH IMMERSION

**Principal:** James A. Spence II

**Grade Configuration:** K to 8

**Number of students:** 684

**Dora Kennedy French Immersion** is a diverse, high-achieving public school that helps students become global citizens through strong academics, French language learning, and a culture of respect and community.

In **DKFI's** K–8 program, students learn core subjects in French, becoming bilingual while following a challenging curriculum based on Maryland State Standards. The program builds critical thinking and cultural awareness, preparing students for success in top high schools, colleges, and future careers around the world.



# DORA KENNEDY FRENCH IMMERSION

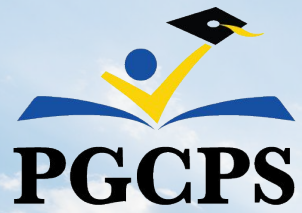


## DKFI VISION

*"DKFI is a multilingual learning community that guides students to become culturally competent, open-minded, critical thinkers for a just world today, tomorrow, and beyond."*







# UPDATES



# UPDATES

## CAPITAL PROGRAMS

### Updated Modular Building Timeline

- Modular disassembly at the Robert Goddard campus will begin the week of June 24, 2025, with completion scheduled for August 5, 2025. (This includes transport and staging at Potomac Landing.)
- Furniture, Fixtures & Equipment (FF&E) relocation is planned for the week of June 24.
- IT network equipment removal (e.g., Aruba switches, racks) is tentatively scheduled for the same week.
- BGE power shut-off is scheduled for June 30, 2025.
- Permitting for contract documents is currently underway.

# QUESTIONS



# THANK YOU

## Contact Us

[capital.programs@pgcps.org](mailto:capital.programs@pgcps.org)