

WELCOME TO THE

**32ND ANNUAL KIDS FOR SCIENCE
STEM FAIR AWARDS CEREMONY**

SATURDAY, MAY 6, 2023

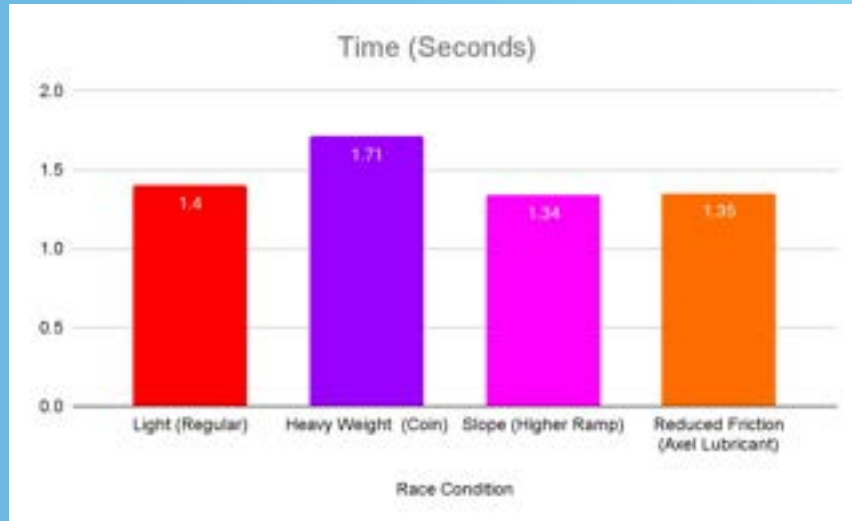
ELEANOR ROOSEVELT HIGH SCHOOL





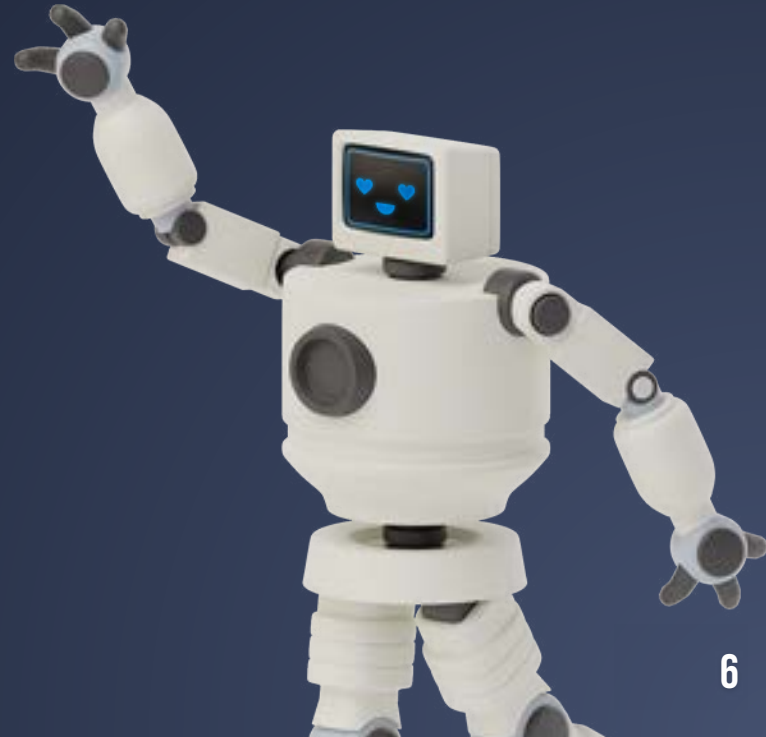
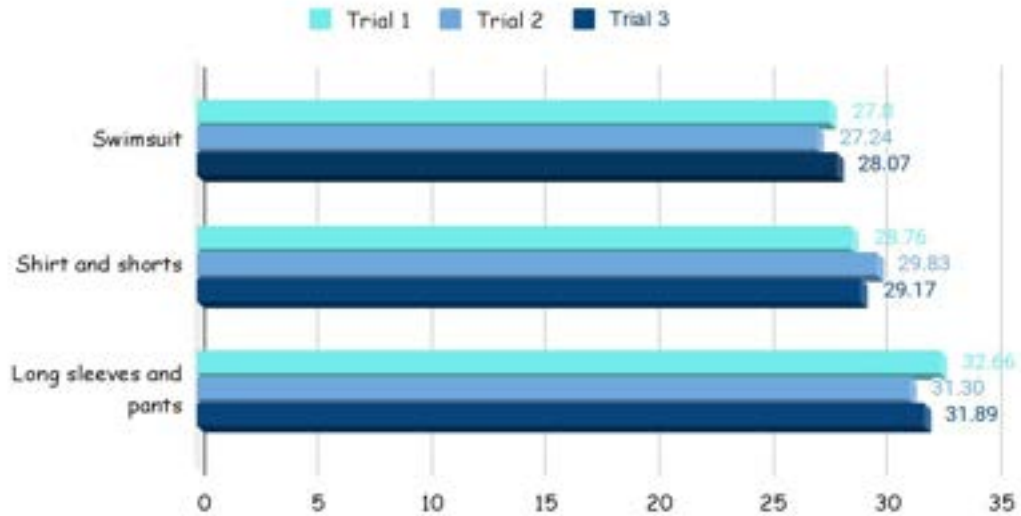
What makes ice melt faster?



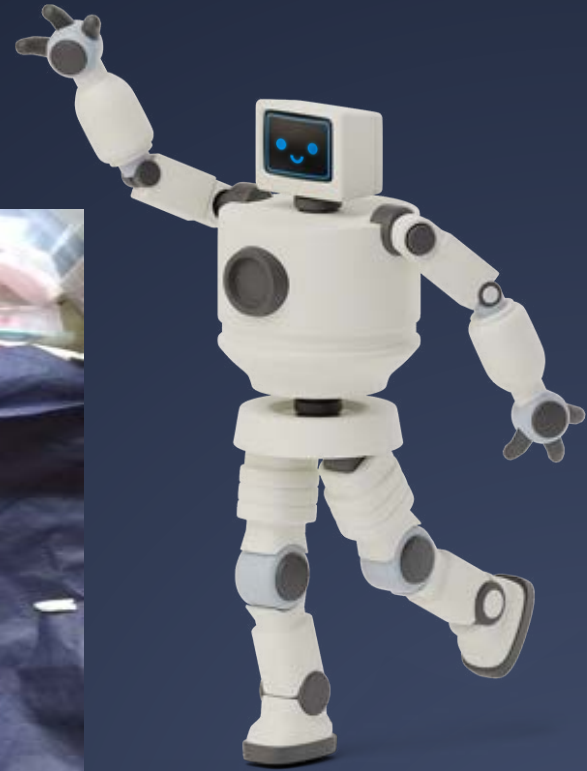




Swim Time in Seconds



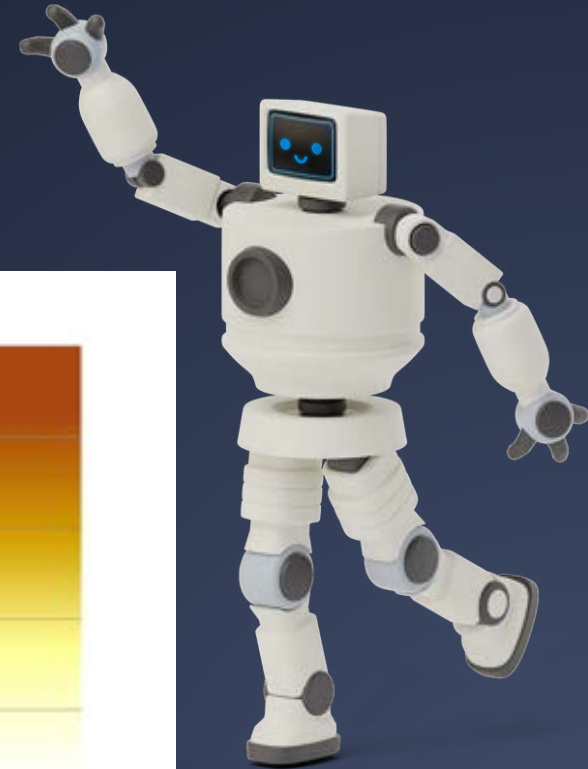
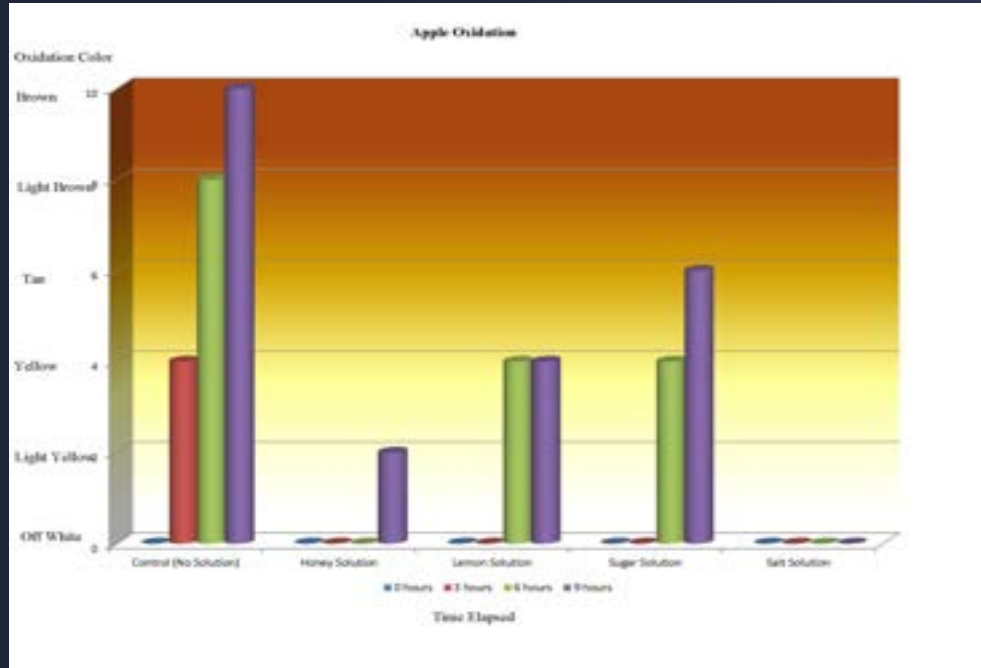






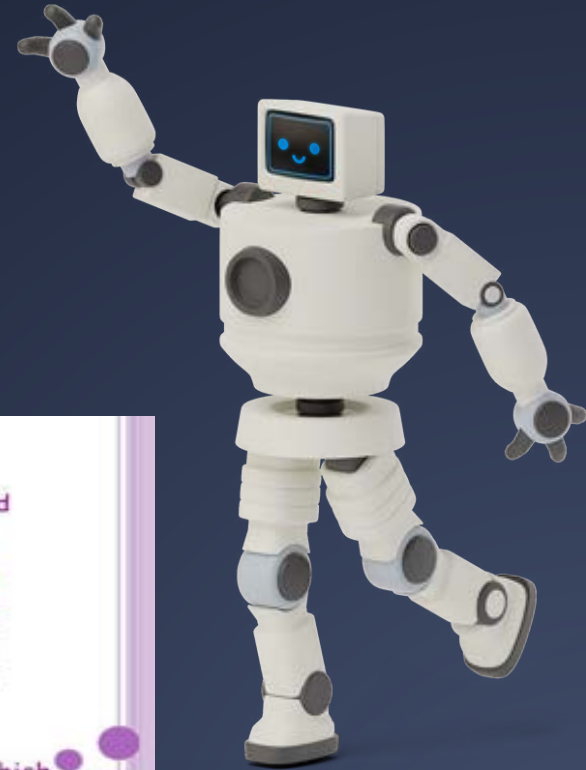
Weight Averages in grams over Time





		variable 1	variable 2
#	objects	dry ice/ice 1oz	dry ice/water 1oz
1	wood stick	0	0
2	plastic spoon	0	0
3	color pencil	-1	-1
4	magnet	0	0

Measure the effect each variable has on the object



DATA

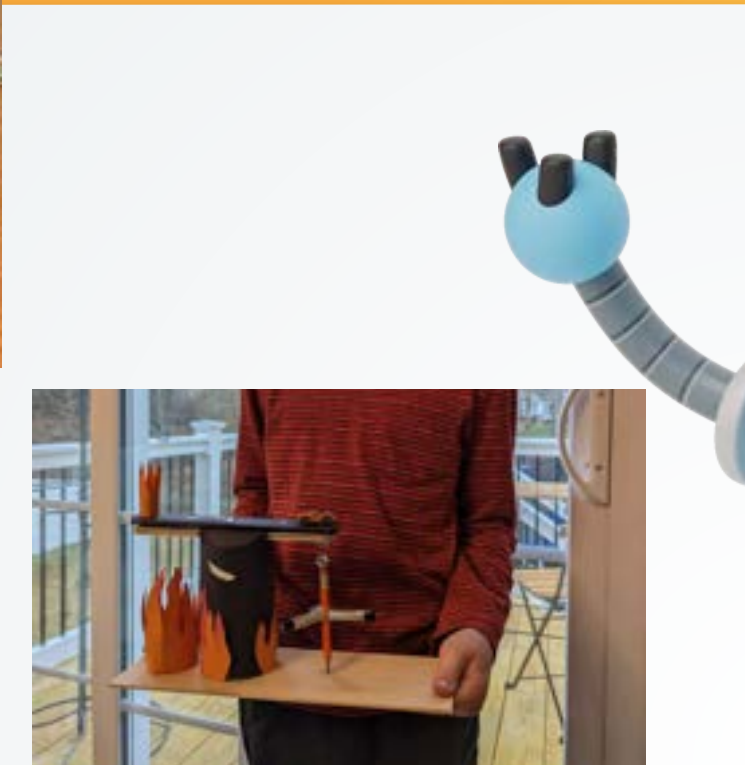
The following chart shows the time I recorded from when I put the tablet in, to when the bubbles stopped.

Number of Tablets	Time
1 tablet	9 min. and 32 sec.
2 tablets	11 min. and 57 sec.
3 tablets	15 min. and 22 sec.

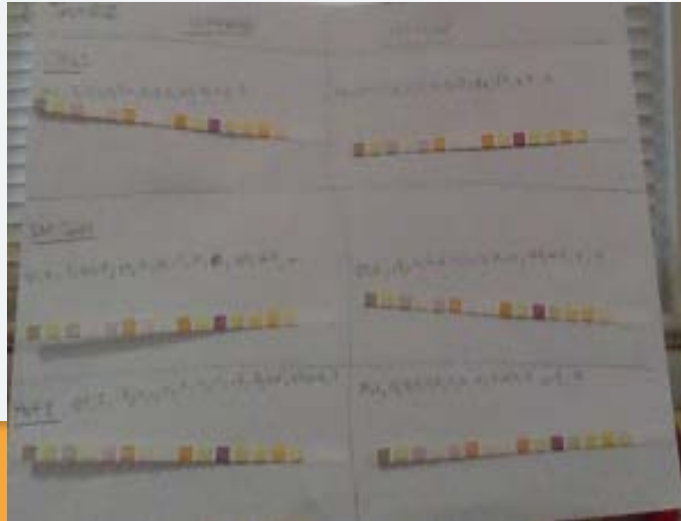
NOTES

3rd Tablet

- It over flowed, because 3 tablets made more gas, which took up more space.
- Pieces of Alka Seltzer were sitting on the top and on the bottom, not dissolving.
- Didn't completely dissolve while shaking, but dissolved 15-20 seconds afterward.



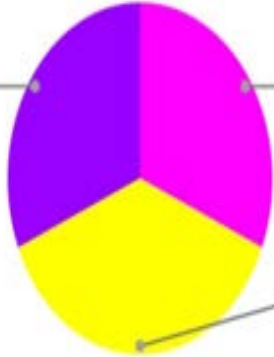
Does Temperature Matter?



Rolling

3-Italian Sparkling

31.4%

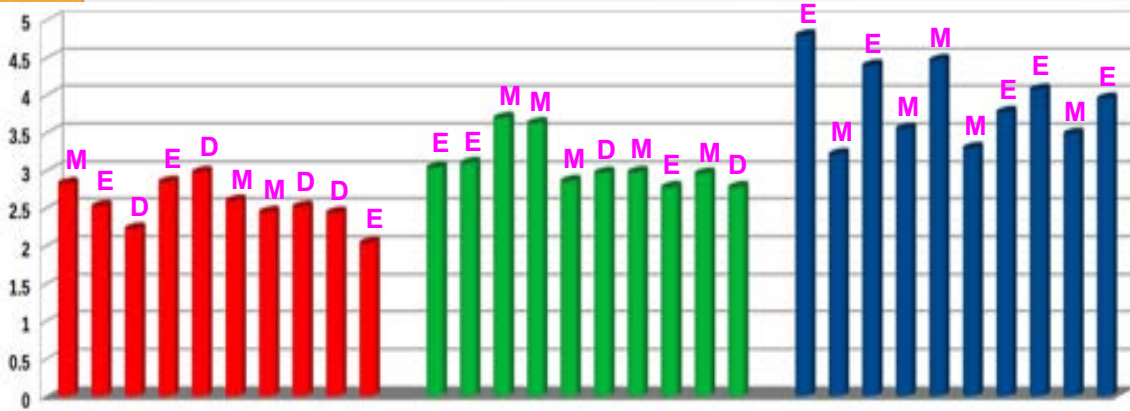


1-Plastic Water Bottle

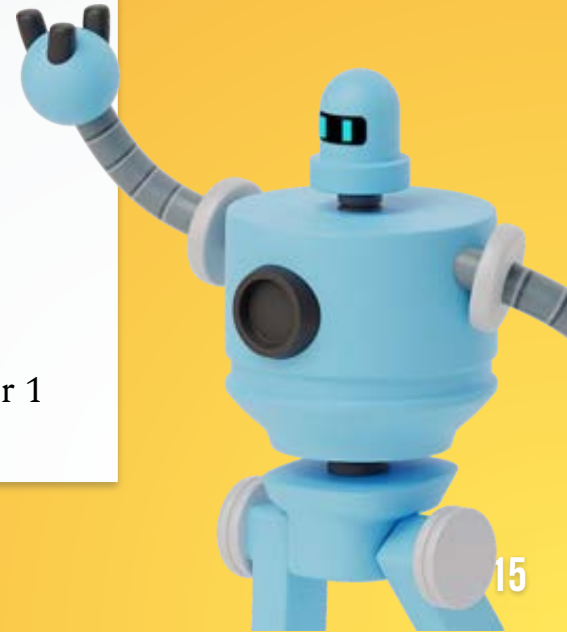
31.4%

2-Metal Water Bottle

37.1%

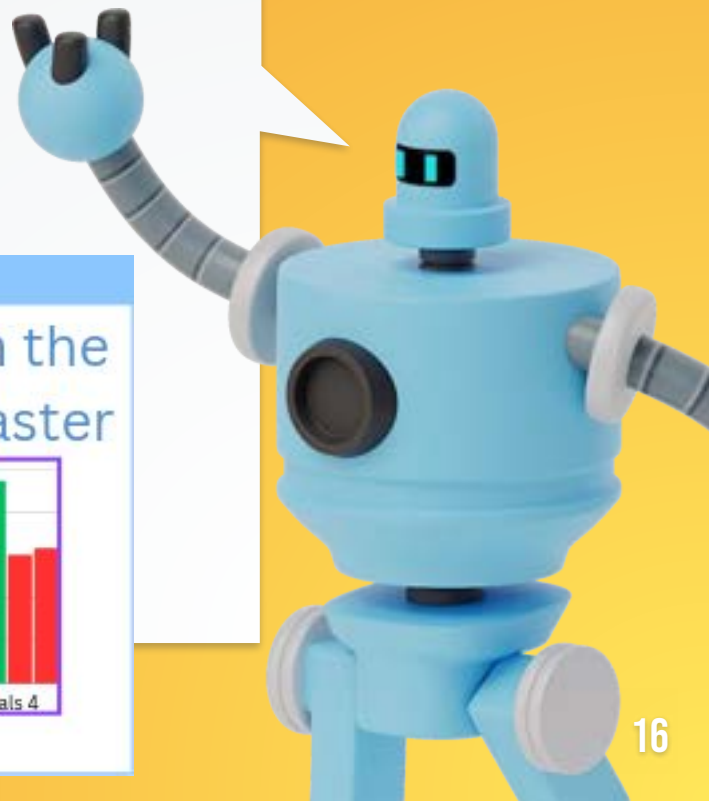


Skater 1

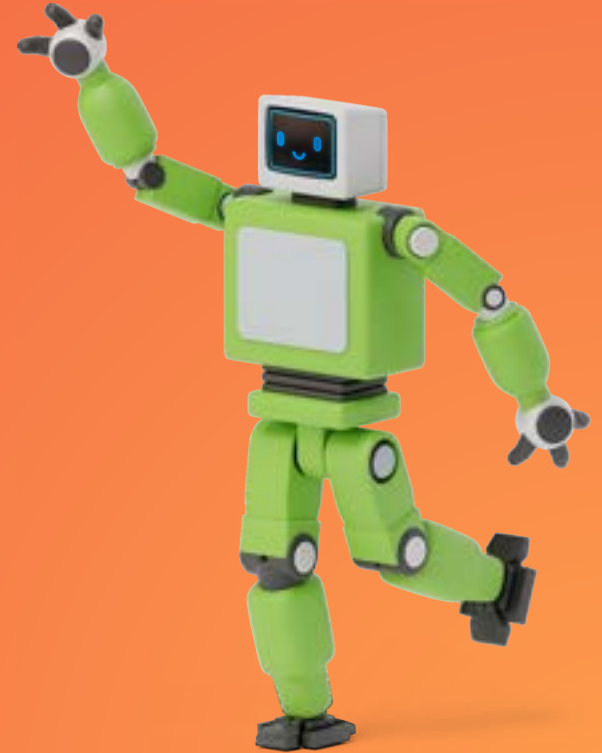
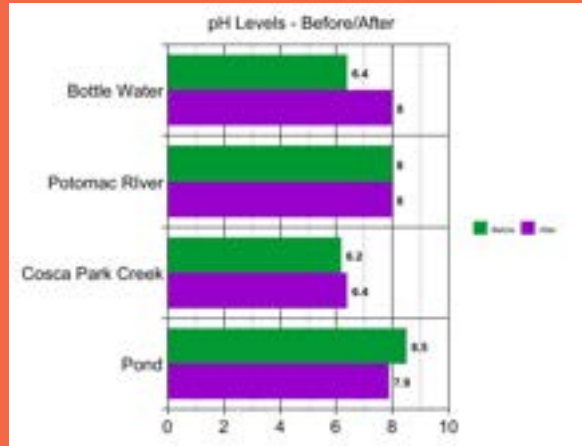




The relationship between in the loop and speed of roller coaster

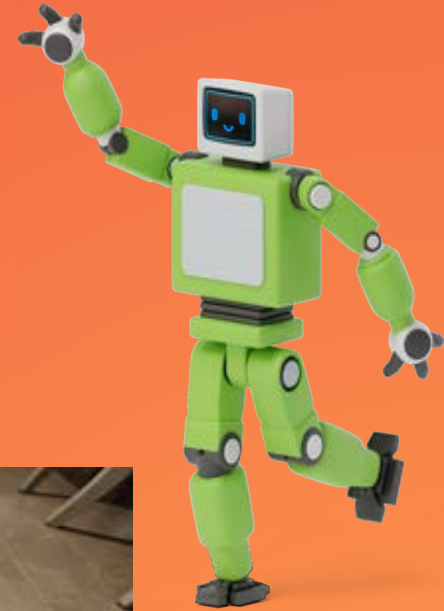
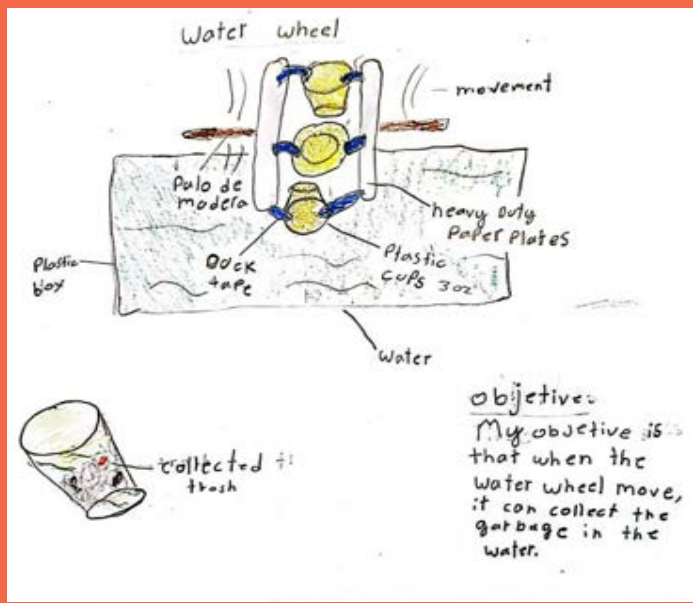






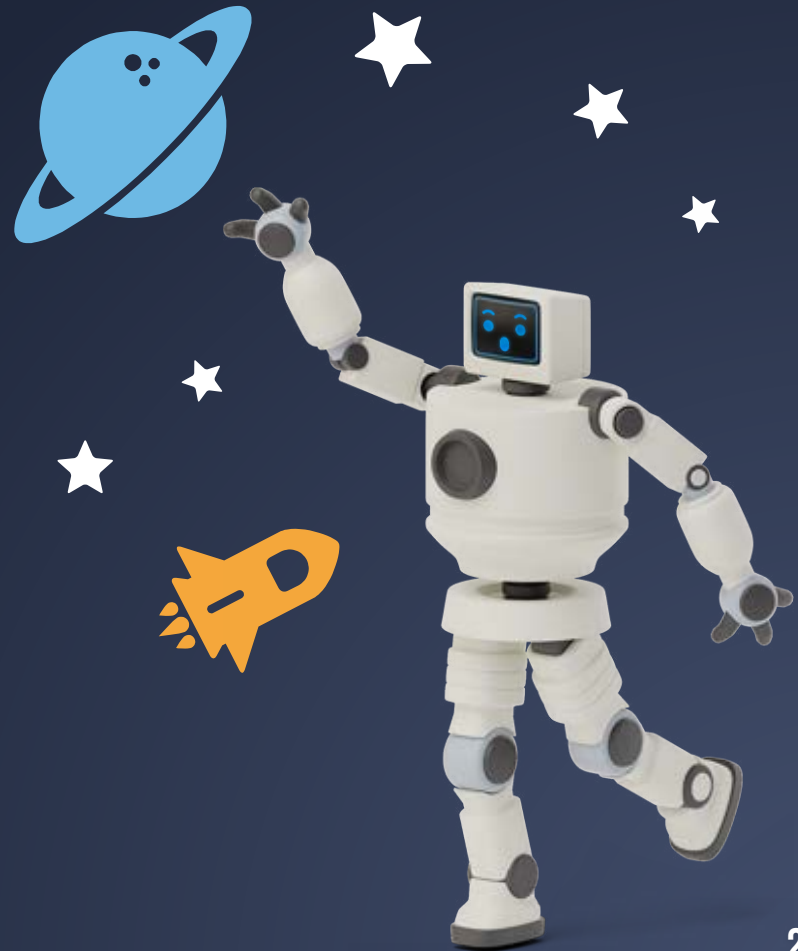




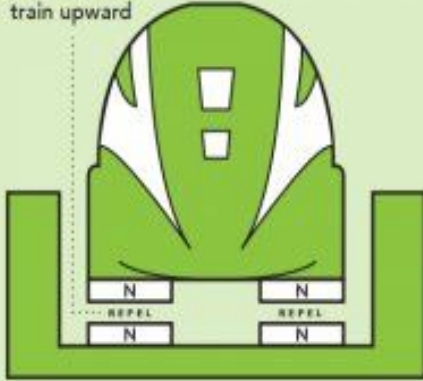


A photograph of a person in a red space suit floating in space. In the background, there is a large grey sphere (resembling the moon) and a bright orange and yellow rocket launch. The scene is set against a dark blue space background with a red horizon line at the top.

3.2.1.....
**ROCK YOUR
ROCKET!!!**
Examining the power behind and height
reached by toy rockets made of different
materials - propelled by human motion.

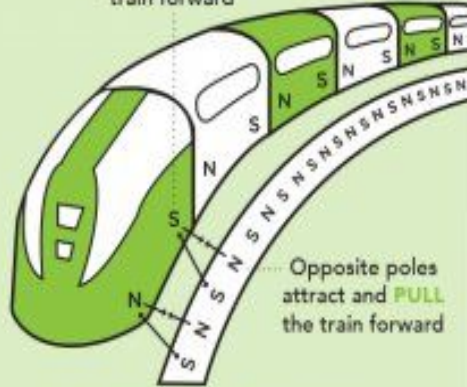


Like poles repel
and **PUSH** the
train upward

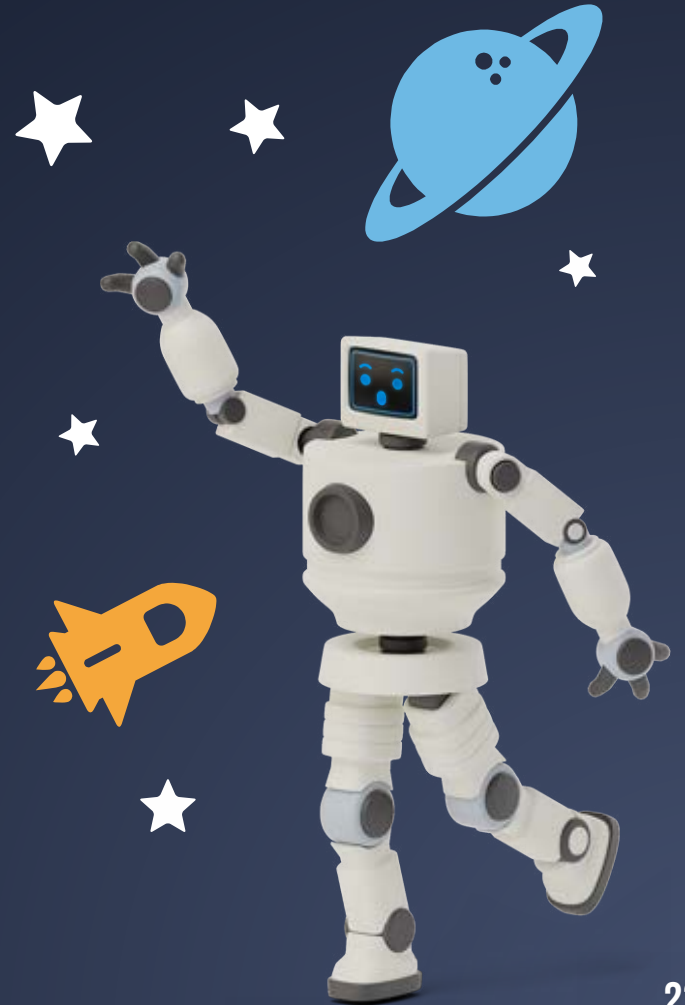


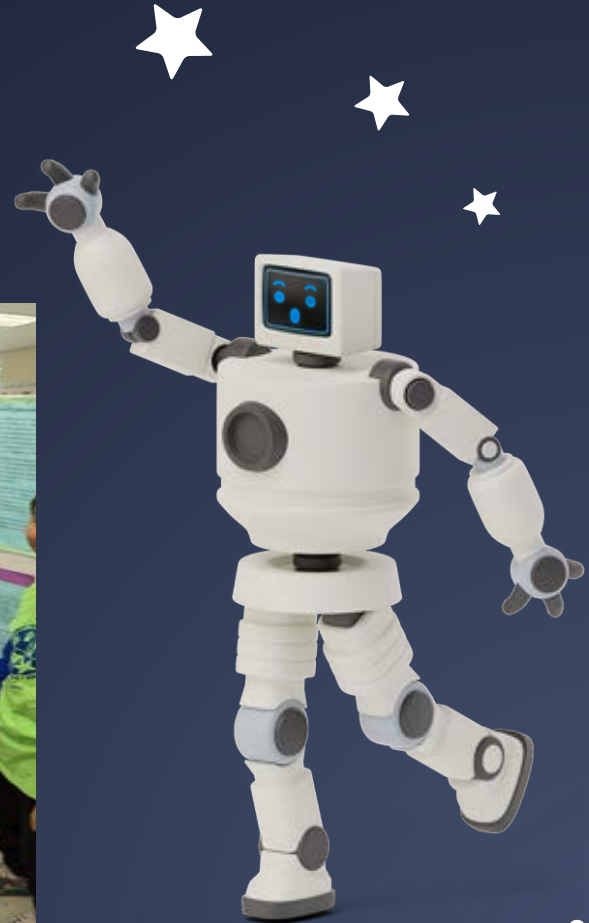
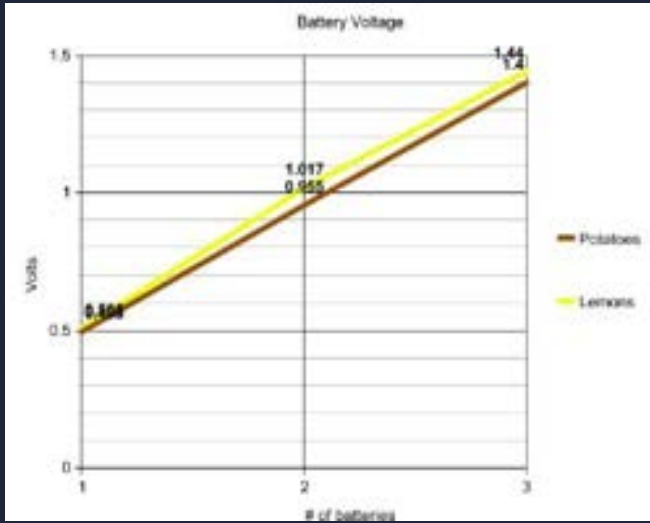
LEVITATION

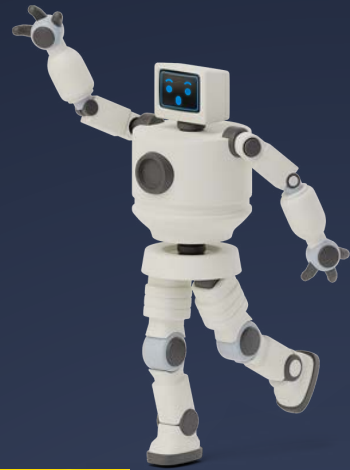
Like poles repel
and **PUSH** the
train forward



PROPULSION

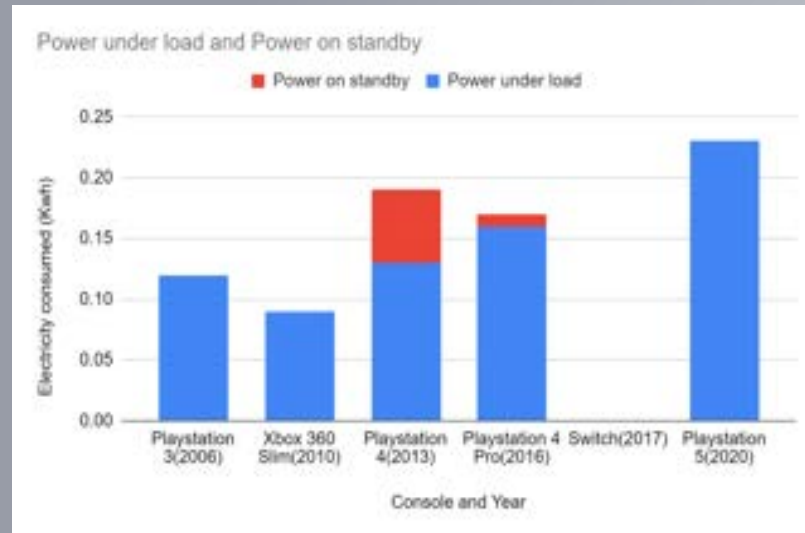
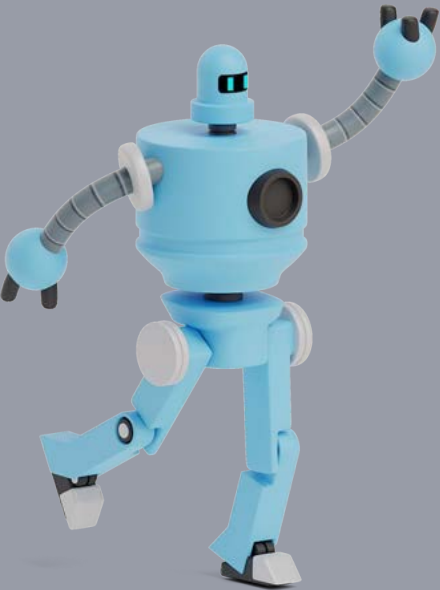


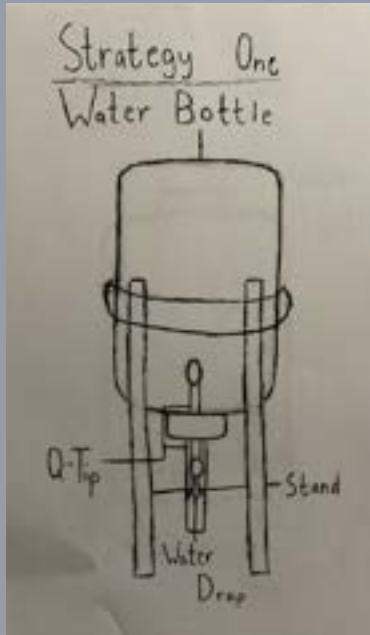


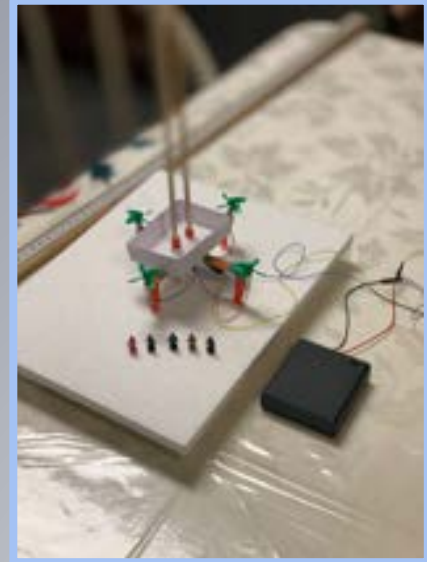


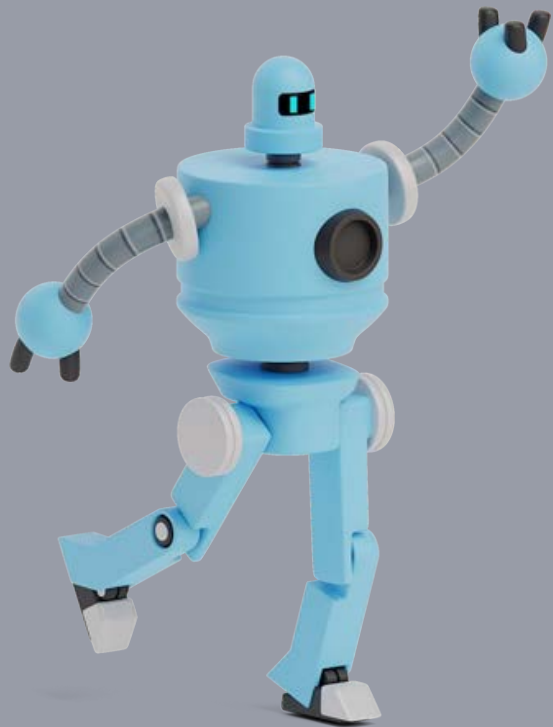
Jumping Jigawatts:

Comparing electricity consumption of gaming consoles across generations



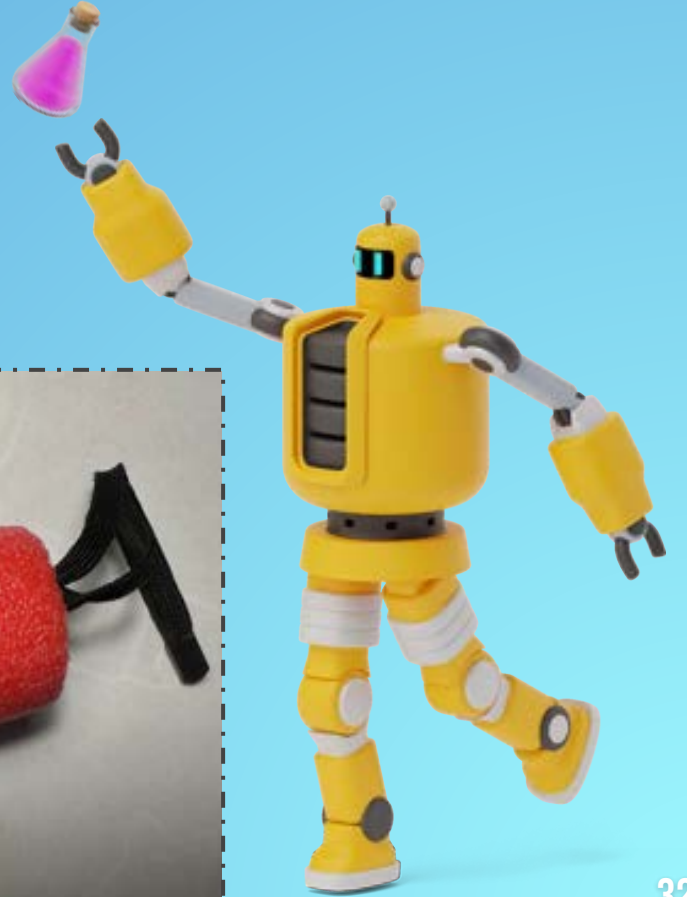




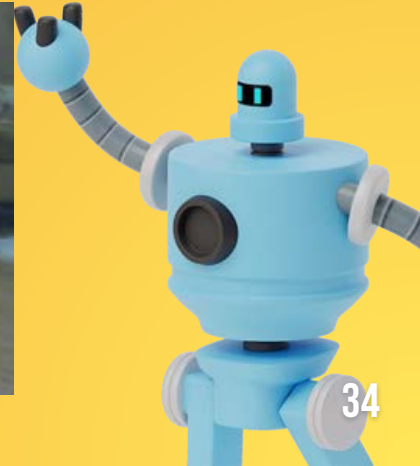
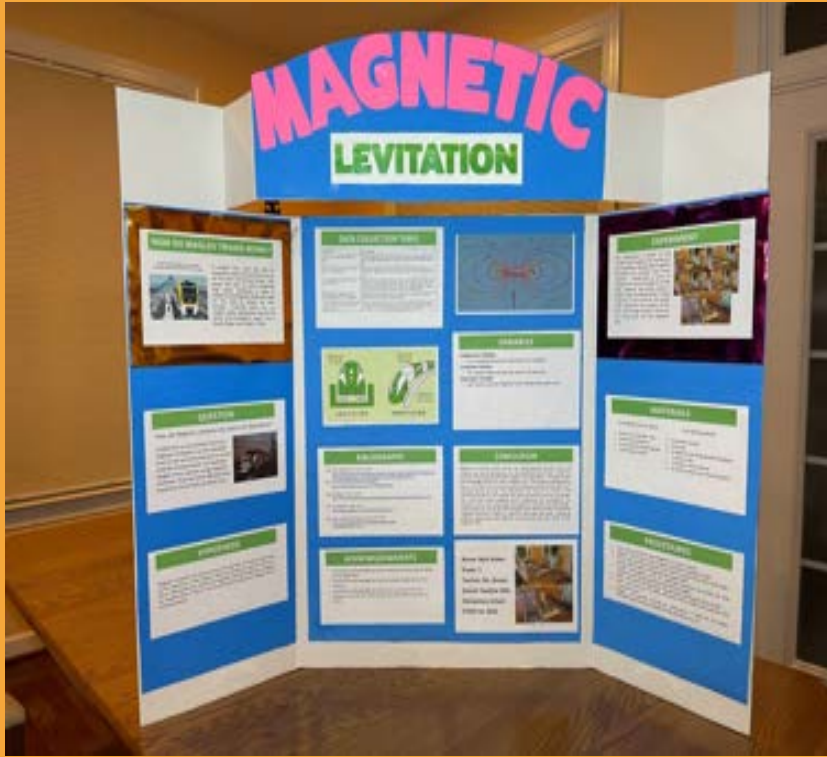












CREDITS

Special thanks to all the people who made and released these awesome resources for free:

- Presentation template by [SlidesCarnival](#)
- Robots by [Alex Monge](#)
- Photographs by [Unsplash](#)

