

Grade 1 December News

A Note From Your Teacher

Remember as we enter the holiday season, please note that school will be closed from December 19 (early dismissal) to January 2 for winter break. We will return on Monday, January 5, 2026. We encourage you to use this time to enjoy quality family moments and maintain healthy routines. Also with a two-week break, we have a limited number of days in school. Please ensure your child is in school daily to ensure they do not miss instruction.

Events & Closures

12/9/25

Qtr 1 Awards Assembly

12/19/15

3-hr early dismissal

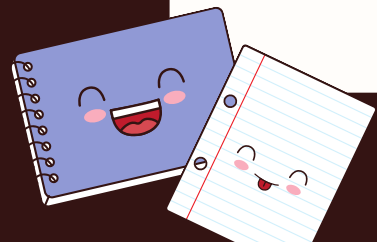
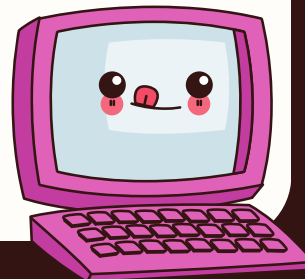
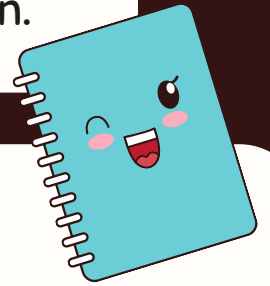
ParentVue

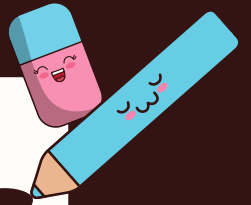
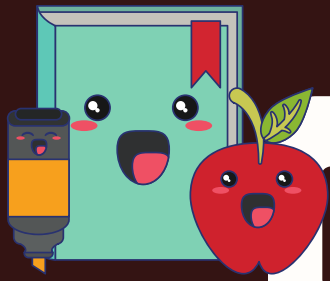
Have you signed up for ParentVUE?

- ParentVUE is an online tool that you can use to view student assignment grades, progress reports, and report cards.

- If you need to create an account, please contact Ms. Shrouder, in the office, to receive your activation code.

- Please visit pgcps.org for more information and to create your account.





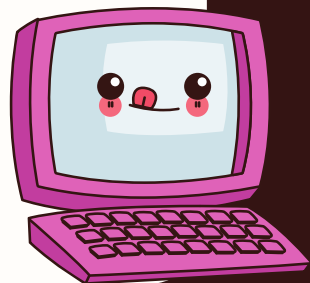
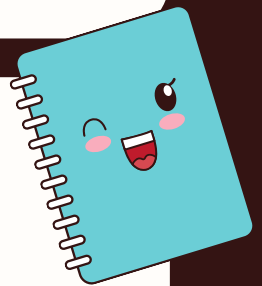
Learning Focus

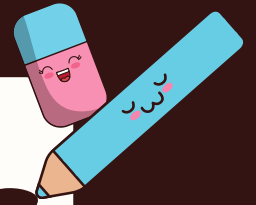
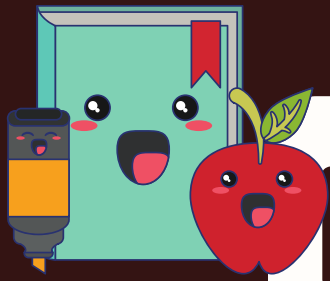
RELA

- In reading, students will learn about identifying main topic, retelling key details, compare and contrast events, and identifying the experiences of characters.
- The December phonics focus skills are changing the medial vowel sound, trigraph /tch/, trigraph /dge/, short e and long e vowel sounds, and blending phonemes.
- New Heart Words: your, can, said, there, down, an, come, which, she, do
- The writing focus is on writing a narrative text.

MATH

- In math, we have started a unit on Subtracting within 20.
- Students will represent and solve problems involving subtraction.
- Students use the number line, ten frame, and tape diagram (bar model) to represent subtraction problems.
- Students will work to develop an understanding of the connection between addition and subtraction problems.





Learning Focus

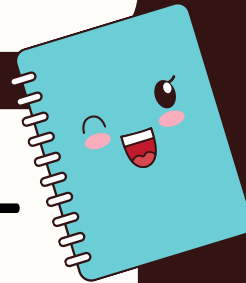
SCIENCE

- Students will learn how humans can help plants meet their needs by designing and building structures.
- Students will design a solution to solve human problems.

SOCIAL STUDIES

In social studies, students will learn how families and cultures are alike and different in many ways, how culture is expressed in various ways, and how technology and communities shape people's lives and affect the way people live.

SOCIAL STUDIES AS TEACHING TOOL



USE GAMES AS TEACHING TOOLS

Plan a family game night. Some of the most popular family board games easily lend themselves to reinforcing social studies concepts. A great start is using Monopoly! Monopoly Jr. (ages 5–8) and Monopoly (ages 5 and up) can be used to teach money management, decision making, Purchasing, and organization (keeping track of the properties you own). Plus, Monopoly comes in many different versions and themes that can suit anyone's personal preference.

